

bmaregress — Bayesian model averaging for linear regression

| | | | |
|-----------------------------|--------------------------------------|--------------------------------|--------------------------------------|
| Description | Quick start | Menu | Syntax |
| Options | Remarks and examples | Stored results | Methods and formulas |
| References | Also see | | |

Description

bmaregress performs Bayesian model averaging (BMA) for linear regression, which accounts for the uncertainty of which [predictors](#) should be included in the regression model. It can be used for inference, prediction, or model selection. Inference can be made about models based on posterior model probabilities (PMPs), importance of predictors based on posterior inclusion probabilities (PIPs), and regression coefficients based on their posterior distributions. **bmaregress** allows you to include predictors as groups and provides several ways of dealing with interaction terms. It supports a variety of priors for models and regression coefficients. Also see [Brief motivation](#) in [Remarks and examples](#) of [\[BMA\]](#) [Intro](#) for a quick overview of BMA.

Quick start

Perform BMA for linear regression of y on x_1 , x_2 , and x_3 using the default model enumeration and the default priors

```
bmaregress y x1 x2 x3
```

Same as above, but specify binomial model prior distribution with a 0.4 probability of inclusion for all predictors

```
bmaregress y x1 x2 x3, mprior(binomial 0.4)
```

Same as above, but with prior probability of inclusion of 0.2 for x_1 and 0.6 for x_2

```
bmaregress y x1 x2 x3, mprior(binomial x1 0.2 x2 0.6)
```

Specify beta-binomial model prior with shape parameters 2 and 4

```
bmaregress y x1 x2 x3, mprior(betabinomial 2 4)
```

Specify a fixed value of 0.5 for the g parameter of a Zellner's g -prior for regression coefficients

```
bmaregress y x1 x2 x3, gprior(fixed 0.5)
```

Same as above, but use the Markov chain Monte Carlo (MCMC) model composition (MC3) sampling algorithm with 5,000 burn-in iterations and MCMC sample size of 50,000

```
bmaregress y x1 x2 x3, gprior(fixed 0.5) sampling burnin(5000) ///
mcmcsz(50000)
```

Specify a random g parameter with a hyper- g prior distribution with hyperparameter 3

```
bmaregress y x1 x2 x3, gprior(hyperg 3)
```

Specify that predictors x_2 and x_3 be considered as a group, and include predictor x_4 in all models

```
bmaregress y (x4, always) x1 (x2 x3)
```

Specify factor variables a and b and their interaction, and request that no heredity rules be applied

```
bmaregress y x1 i.a##i.b, heredity(none)
```

Redisplay results in variable input order, and report only predictors with PIP above 0.5

```
bmaregress, inputorder pipcutoff(0.5)
```

Save model results to `bmadata.dta` on replay, and store estimates in memory as `bmaest`

```
bmaregress, saving(bmadata.dta)
estimates store bmaest
```

Menu

Statistics > Bayesian model averaging > Linear regression

Syntax

BMA linear regression with in–out predictors

```
bmaregress depvar [inoutvars] [if] [in] [weight]
[, mprior(mspec) gprior(gspec) options]
```

BMA linear regression with always-included predictors

```
bmaregress depvar (alwaysvars, always) [inoutvars] [if] [in] [weight]
[, mprior(mspec) gprior(gspec) options]
```

BMA linear regression with groups of predictors

```
bmaregress depvar [(alwaysvars, always)] [inoutspec] [if] [in] [weight]
[, mprior(mspec) gprior(gspec) options]
```

inoutvars and *alwaysvars* are *varlist*.

inoutspec is a combination of in–out terms *inoutterm*, where *inoutterm* is one of in–out predictors, *varname*, or one of in–out groups of predictors, (*varlist*). *varname* is always its own group; that is, (*varname*) is implied. Also see *Groups of predictors* in *Remarks and examples*.

inoutvars, *alwaysvars*, and *inoutspec* may not contain duplicate terms. See [D] [v1](#) for managing large variable lists.

| <i>options</i> | Description |
|--|--|
| Model | |
| <code>mprior(<i>mspec</i>)</code> | prior for model space; default is <code>mprior(betabinomial)</code> |
| <code>gprior(<i>gspec</i>)</code> | prior for Zellner's <i>g</i> parameter; default is <code>gprior(bench)</code> |
| <code>heredity(<i>heredspec</i>)</code> | heredity rule for interactions of predictors; default is <code>heredity(strong)</code> |
| <code>groupfv</code> | group all factor variables and their interactions |
| Simulation | |
| <code>enumeration</code> | model enumeration; default with <i>fixed g</i> and no more than 12 predictors or groups; not allowed with <i>random g</i> |
| <code>sampling</code> | model sampling; default with <i>random g</i> or with more than 12 predictors or groups |
| <code>mcmcsize(#)</code> | MCMC sample size; default is <code>mcmcsize(10000)</code> |
| <code>burnin(#)</code> | burn-in period; default is <code>burnin(2500)</code> |
| <code>thinning(#)</code> | thinning interval; default is <code>thinning(1)</code> |
| <code>minitial(<i>minitspec</i>)</code> | initial model for MC3 sampling; default varies |
| <code>ginitial(<i>ginitsspec</i>)</code> | initial value for random <i>g</i> for MC3 sampling; default varies |
| <code>rseed(#)</code> | random-number seed |
| Reporting | |
| <code>saving(<i>filename</i> [, replace])</code> | save simulation results to <i>filename.dta</i> |
| <code>clevel(#)</code> | set credible interval (CrI) level for random <i>g</i> ; default is <code>clevel(95)</code> |
| <code>hpd</code> | display highest posterior density (HPD) CrIs instead of the default equal-tailed CrIs for random <i>g</i> |
| <code>[no]dots</code> | suppress or display dots every 100 iterations and iteration numbers every 1,000 iterations; default is <code>nodots</code> |
| <code>dots(# [, every(#)])</code> | display dots as simulation is performed |
| <code>inputorder</code> | display results in input order; default is descending order of PIP |
| <code>recentered</code> | show coefficients for recentered predictors |
| <code>pipcutoff(#)</code> | lowest PIP value for displaying results; default is <code>pipcutoff(.01)</code> |
| <code>notable</code> | suppress estimation table |
| <code>noheader</code> | suppress output header |
| <code>title(<i>string</i>)</code> | display <i>string</i> as title above the table of parameter estimates |
| <code>display_options</code> | control spacing, line width, and base and empty cells |
| <code>allcoef</code> | show all coefficients; equivalent to <code>pipcutoff(0)</code> |

inoutvars, *alwaysvars*, and *inoutspec* may contain factor variables; see [U] 11.4.3 **Factor variables**.

devar, *inoutvars*, *alwaysvars*, and *inoutspec* may contain time-series operators; see [U] 11.4.4 **Time-series varlists**.

`collect` is allowed; see [U] 11.1.10 **Prefix commands**.

Only `fweights` are allowed; see [U] 11.1.6 **weight**.

`allcoef` does not appear in the dialog box.

See [U] 20 **Estimation and postestimation commands** for more capabilities of estimation commands.

| <i>mspec</i> | Description |
|--|--|
| <code>betabinomial</code> | same as <code>betabinomial 1 1</code> ; the default |
| <code>betabinomial #1 #2</code> | beta-binomial prior using shape parameters of beta distribution |
| <code>betabinomial #</code> | beta-binomial prior using expected model size <code>#</code> |
| <code>uniform</code> | uniform prior |
| <code>binomial #</code> | binomial prior with the same inclusion probability <code>#</code> for all in-out terms |
| <code>binomial</code> | same as <code>binomial 0.5</code> |
| <code>binomial inouterm # [...]</code> | binomial prior with specified inclusion probabilities |
| <i>gspec</i> | Description |
| <i>Fixed priors:</i> | |
| <code>bench</code> | set $g = \max(n, p^2)$; the default |
| <code>uip</code> | set $g = n$ (n is sample size); unit-information prior |
| <code>ric</code> | set $g = p^2$ (p is the number of predictors); risk inflation criterion |
| <code>sqrtn</code> | set $g = \sqrt{n}$ |
| <code>fixed #</code> | set g to fixed value <code>#</code> |
| <code>ebl</code> | empirical Bayes local estimate |
| <i>Random priors:</i> | |
| <code>betashrink #1 #2</code> | beta prior with shapes <code>#1</code> and <code>#2</code> on shrinkage $\delta = g/(1 + g)$ |
| <code>betabench #</code> | benchmark beta-shrinkage prior with shapes $\# \times \max(n, p^2)$ and $\#$ |
| <code>hyperg #</code> | hyper- g prior with hyperparameter <code>#</code> |
| <code>hypergn #</code> | hyper- g/n prior with hyperparameter <code>#</code> |
| <code>zsiow</code> | Zellner–Siow prior |
| <code>robust</code> | robust prior |
| <i>heredspec</i> | Description |
| <code>strong</code> | strong heredity; the default |
| <code>weak</code> | weak heredity |
| <code>none</code> | no heredity |

Options

Model

`mprior(mspec)` specifies model prior, a prior distribution on the model space. In a regression setting, this is equivalent to specifying prior probabilities for the inclusion of predictors in a model. A group of predictors is viewed as one term in the model prior specification. That is, the prior inclusion probability is specified for the entire group and not the individual predictors.

`mspec` is one of `betabinomial`, `betabinomial #1 #2`, `betabinomial #`, `uniform`, `binomial #`, `binomial`, and `binomial inouterm # [...]`.

`betabinomial`, the default, and `betabinomial #1 #2` specify a binomial model prior with an inclusion probability (IP) and a beta prior on the IP. The two arguments specify the shape parameters of the beta distribution. `betabinomial` is a synonym for `betabinomial 1 1`.

`betabinomial #` specifies a binomial model prior and a beta prior for the IP. This specification includes one argument `#`, which is the expected number of `inoutterms` to be included (Ley and Steel 2009). `#` must be greater than 0 and less than the total number of `inoutterms` specified in the regression model. If there are no groups specified, `#` is the expected model size.

`uniform` specifies a uniform model prior, which assumes an equal probability for each model.

`binomial #` specifies a binomial model prior, in which all `inoutterms` have the same IP `#` between 0 and 1.

`binomial` is a synonym for `binomial 0.5`.

`binomial inoutterm # [inoutterm # [...]]` specifies a binomial model prior with different values of IP for `inoutterms`. IPs are specified as pairs consisting of an `inoutterm` and the corresponding IP `#`, $0 < \# < 1$. `inoutterms` for which no IP is specified are assumed to have probability of 0.5. The specified `inoutterms` must be one of the `inoutterms` from the regression model specification. For grouped terms, it is sufficient to list one of the predictors from the group to specify the IP, and this probability will be used for the entire group. But you may not specify different IPs for multiple predictors from the same group. You can specify the same IP `#` for multiple predictors from different groups by using `binomial inoutterm [inoutterm [...]] #`.

`gprior(gspec)` specifies a fixed value or a prior distribution (hyperprior) for parameter g of a Zellner's g -prior assumed for regression coefficients. Let p be the number of predictors and n be the sample size.

`gspec` is one of the fixed priors—`bench`, `uip`, `ric`, `sqrtn`, `fixed #`, or `eb1`—or one of the random priors—`betashrink #1 #2`, `betabench #`, `hyperg #`, `hypergn #`, `zsiow`, or `robust`.

The following are the fixed priors:

`bench` specifies the benchmark prior with $g = \max(n, p^2)$, which is a combination of the unit-information and risk inflation criterion priors. This is the default. This prior was suggested by Fernández, Ley, and Steel (2001a), who found it to perform well in a variety of cases with respect to a model's predictive performance.

`uip` specifies the unit-information prior with $g = n$ (Kass and Wasserman 1995), which assigns the same amount of information to the prior for regression coefficients as is contained in one observation. Under this prior, the Bayes factors behave like the Bayesian information criterion (BIC).

`ric` specifies the prior based on the risk inflation criterion with $g = p^2$ (Foster and George 1994). This prior has good small-sample properties.

`sqrtn` specifies the square-root n prior with $g = \sqrt{n}$ (Porwal and Raftery 2022b).

`fixed #` specifies a fixed value `#` for g .

`eb1` use the empirical Bayes local estimate for g as suggested by Liang et al. (2008). Instead of using an a priori value for g , this prior estimates g from the data and does it separately for each model.

The following are the random priors:

`betashrink #1 #2` specifies a general beta-shrinkage prior, which uses a beta prior with shape parameters `#1` and `#2` for the shrinkage factor $\delta = g/(g + 1)$.

`betabench #` specifies the benchmark beta-shrinkage prior suggested by Ley and Steel (2012), which uses a beta prior with shape parameters $\# \times \max(n, p^2)$ and `#` on the shrinkage factor $\delta = g/(g + 1)$.

`hyperg #` specifies the hyper- g prior suggested by Liang et al. (2008), which is a beta prior with shape parameters 1 and $\#/2 - 1$ on shrinkage factor $\delta = g/(g + 1)$. The hyperparameter $\#$ must satisfy $2 < \# \leq 4$.

`hypergn #` specifies the hyper- g/n prior suggested by Liang et al. (2008), which is a beta prior with shape parameters 1 and $\#/2 - 1$ on $g/(g + n)$. The hyperparameter $\#$ must satisfy $2 < \# \leq 4$.

`zsiow` specifies a prior suggested by Zellner and Siow (1980), which is an inverse-gamma prior on g with shape 0.5 and rate $n/2$.

`robust` specifies the robust prior as defined in Bayarri et al. (2012).

`heredity(heredspec)` specifies a heredity rule for interaction terms. This option is relevant only when interaction terms, terms that include $\#$ or $\#\#$, are present; see [U] 11.4.3 **Factor variables** and *Handling factor variables and interactions* in *Remarks and examples*.

heredspec is one of `strong`, `weak`, or `none`.

`strong` specifies that whenever an interaction is included in a model, all main effects are also included, which aids interpretation. This is the default. This rule is the most restrictive for the model space. If your goal is prediction, you may decide to choose a less restrictive rule.

`weak` specifies that whenever an interaction is included in a model, at least one main effect is also included. This rule is less restrictive for the model space than `heredity(strong)`.

`none` specifies that interactions be included independently of the main effects. This rule does not make any additional restrictions for the model space and may be more beneficial when prediction is of interest.

`groupfv` specifies that all factor-variable terms be grouped and is relevant only in the presence of factor variables; see [U] 11.4.3 **Factor variables** and *Handling factor variables and interactions* in *Remarks and examples*.

Simulation

`enumeration` specifies that model enumeration be used to explore the model space. This option considers all 2^p models, where p is the number of predictors, and is thus not feasible with many predictors. It is the default for a fixed g when the number of predictors or groups is less than or equal to 12. And it may not be specified with more than 24 predictors or groups of predictors. Only one of `enumeration` or `sampling` may be specified.

`enumeration` is not allowed with a random g , meaning when one of the random g priors is specified in option `gprior()`: `betashrink`, `betabench`, `hyperg`, `hypergn`, `zsiow`, or `robust`.

Model enumeration is a deterministic procedure, so the following sampling options are not available with it: `mcmcsize()`, `burnin()`, `thinning()`, `minitial()`, `ginitial()`, `rseed()`, `clevel()`, and `hpd`. Also, options `nodots`, `dots`, and `dots()` are not relevant and thus ignored.

`sampling` specifies that sampling be used to explore the model space. This is the default with a random g or when the number of predictors or groups is greater than 12. With a fixed g , the MC3 algorithm (Madigan and York 1995) is used to sample from the model space (Fernández, Ley, and Steel 2001a and Ley and Steel 2012). With a random g , a modified MC3 is used—MC3 is used to sample models, and an adaptive Metropolis–Hastings method is used to sample g . Only one of `sampling` or `enumeration` may be specified.

`mcmcsize(#)` specifies the target MCMC sample size for the model space. The default is `mcmcsize(10000)`. The total number of iterations for the MC3 algorithm equals the sum of the burn-in iterations and the MCMC sample size (in the absence of thinning). If thinning is present, the total number of MCMC iterations is computed as `burnin() + (mcmcsize() - 1) × thinning() + 1`.

Computation time is proportional to the total number of iterations. The MCMC sample size determines the precision of posterior summaries. Also see *Convergence of BMA* in *Remarks and examples* and *Burn-in period and MCMC sample size* in [BAYES] **bayesmh**. This option is not allowed with model enumeration.

burnin(#) specifies the number of iterations for the burn-in period of MCMC. The MCMC states simulated during burn-in are not used for estimation. The default is **burnin**(2500). Also see *Convergence of BMA* in *Remarks and examples* and *Burn-in period and MCMC sample size* in [BAYES] **bayesmh**. This option is not allowed with model enumeration.

thinning(#) specifies the thinning interval. Only simulated values from every $(1 + k \times \#)$ th iteration for $k = 0, 1, 2, \dots$ are saved in the final MCMC sample; all other simulated values are discarded. The default is **thinning**(1); that is, all simulation values are saved. Thinning greater than one is typically used for decreasing the autocorrelation of the simulated MCMC sample. This option is not allowed with model enumeration.

initial(*minitspec*) specifies an initial model for the MCMC sample of models. This option is not allowed with model enumeration.

minitspec is one of **random**, *varlist*, **null**, or **full**.

random specifies that the initial model for the MCMC be generated randomly from the model prior distribution. This is the default with fewer than 1,000 predictors.

varlist specifies that the initial model include a given set of predictors *varlist*. The initial model must be compatible with the specified regression model for the in-out predictors. For example, if you specified the following command,

```
. bmaregress x1 (x2 x3) (x4, always)
```

then the valid initial model may 1) include or exclude both **x2** and **x3** and 2) include or exclude **x1**.

null specifies that the null model, the model with only a constant term, be used as initial. This is the default with 1,000 predictors or more.

full specifies that the full model, the model that includes all predictors, be used as initial.

ginitial(*ginitspec*) specifies the initial *g* value for the MCMC for random *g*. This option is allowed only with random *g* priors specified in option **gprior**(): **betashrink**, **betabench**, **hyperg**, **hypergn**, **zsiow**, or **robust**. This option is not allowed with model enumeration.

ginitspec is one of **eb1**, **random**, or **#**.

eb1 specifies that the empirical Bayes local estimate for the initial model be used as the initial value for *g*. This is the default.

random specifies that the initial value for *g* be generated randomly from its prior distribution.

specifies the initial value for *g*.

rseed(#) sets the random-number seed. This option can be used to reproduce results. **rseed**(#) is equivalent to typing **set seed #** prior to calling **bmaregress**; see [R] **set seed**. This option is not allowed with model enumeration.

Reporting

saving(*filename* [, **replace**]) saves simulation results in *filename.dta*. The **replace** option specifies to overwrite *filename.dta* if it exists. If the **saving**() option is not specified, **bmaregress** saves simulation results in a temporary file for later access by postestimation commands. This temporary file will be overridden every time **bmaregress** is run and will also be erased if the current estimation results are cleared. **saving**() may be specified during estimation or on replay.

The saved dataset has the following structure. Variable `_chain` is the chain identifier; it is always 1. Variable `_index` records iteration numbers. Variables `_loglikelihood`, `_logposterior`, and `_logmprior` record the log-likelihood, log-posterior, and log model-prior, respectively. `_logposterior` records the joint posterior of models and g . Variable `g` records the used fixed value of Zellner's g parameter or a sample from its posterior distribution. Variable `logs2delta` contains a sample from the posterior distribution of parameter $\ln(s_{j,\delta}^2)$, defined in *Conditional posterior distribution of model parameters* of *Methods and formulas*. This parameter corresponds to the log of two times the inverse-gamma scale parameter of the posterior distribution of error variance for a given model. Model states are encoded as binary vectors and saved in variables `state_eq1_p1` through `state_eq1_pp` for each of the p predictors. Each of these variables can be viewed as a sample from a posterior distribution of a random indicator for inclusion of the respective predictor in a model. The model-specific posterior mean estimates of coefficients are saved in `mean_eq1_p1` through `mean_eq1_pp`. The model-specific posterior variance estimates of coefficients are saved in `var_eq1_p1` through `var_eq1_pp`. Variable `_hash` records information used by `bmaregress` to identify models. `bmaregress` saves only model states and parameter values that are different from one iteration to another and the frequency of each state in variable `_frequency`. Thus, `_index` may not necessarily contain consecutive integers. Remember to use `_frequency` as a frequency weight if you need to obtain any summaries of this dataset.

`clevel(#)` specifies the credible level, as a percentage, for equal-tailed and HPD CrIs for random g . The default is `clevel(95)` or as set by `[BAYES] set clevel`.

`hpd` displays the HPD CrIs instead of the default equal-tailed CrIs for random g .

Options `clevel()` and `hpd` are not allowed with model enumeration. These options are allowed only with random g priors specified in option `gprior()`: `betashrink`, `betabench`, `hyperg`, `hypergn`, `zsiow`, or `robust`.

`nodots`, `dots`, `dots(#)`, and `dots(#, every(#))` specify to suppress or display dots during simulation. `nodots`, the default, suppresses the display of dots. `dots` displays dots every 100 iterations and iteration numbers every 1,000 iterations; it is a synonym for `dots(100, every(1000))`. `dots(#)` displays a dot every $\#$ iterations. If `dots(..., every(#))` is specified, then an iteration number is displayed every $\#$ th iteration instead of a dot. `dots(, every(#))` is equivalent to `dots(1, every(#))`. During the adaptation period, a symbol `a` is displayed instead of a dot. The dots options are ignored with model enumeration.

`inputorder` specifies that the results be displayed in the order in which predictors are specified in the model. By default, the results are displayed in the descending order of PIP.

`recentered` specifies that coefficients for the recentered predictors be shown in the output table. By default, the coefficients for the untransformed predictors are shown. The two representations are related by a linear transformation that affects only the constant term in the model.

`pipcutoff(#)` specifies the lowest PIP limit for displaying the results. The results for predictors with PIP lower than this limit are not shown in the output table. The default is `pipcutoff(0.01)`. For models with many predictors, you can limit the displayed results by using a higher `pipcutoff()`.

`notable` suppresses the estimation table from the output.

`noheader` suppresses the output header either at estimation or upon replay.

`title(string)` specifies an optional title for the command that is displayed above the table of the parameter estimates.

display_options: `vsquish`, `noemptycells`, `baselevels`, `allbaselevels`, `nofvlabel`, `fwrap(#)`, `fwrapon(style)`, and `no!stretch`; see [\[R\] Estimation options](#).

The following option is available with `bmaregress` but is not shown in the dialog box:

`allcoef` shows all regression coefficients. This is equivalent to `pipcutoff(0)`. This option may produce a lengthy output with many predictors.

Remarks and examples

[stata.com](http://www.stata.com)

Remarks are presented under the following headings:

- Introduction to BMA for linear regression*
- Convergence of BMA*
- Interpretation of BMA regression coefficients*
- Using the `bmaregress` command*
- Groups of predictors*
- Handling factor variables and interactions*

Examples are presented under the following headings:

- Getting started examples*
 - Example 1: BMA linear regression (model enumeration)*
 - Example 2: Exploring high-posterior probability models*
 - Example 3: Model-size distribution*
 - Example 4: Posterior distributions of regression coefficients*
 - Example 5: Credible intervals*
 - Example 6: Comparison with standard linear regression*
 - Example 7: Jointness of predictors*
 - Example 8: Exploring model space using MC3 (model sampling)*
 - Example 9: Checking BMA convergence*
 - Example 10: BMA linear regression using different g-priors*
 - Example 11: Sensitivity analysis of model priors*
 - Example 12: Comparing model fit using the log predictive-score*
 - Example 13: BMA predictions*
 - Example 14: Cleanup after BMA analysis*
- BMA predictive performance for the USA crime rate data*
 - Example 15: BMA regression for the USA crime rate*
 - Example 16: Assessing BMA predictive performance*
- BMA analysis of cross-country economic growth data*
 - Example 17: BMA linear regression of economic growth*
 - Example 18: Model and variable-inclusion summaries*
 - Example 19: Coefficient summaries*
 - Example 20: Jointness measures*
 - Example 21: BMA regression of economic growth using random parameter g*

Introduction to BMA for linear regression

A widely used technique in data analysis is model selection, which comprises two stages: choosing an optimal model for the data based on specific criteria and conducting inference based on the selected model. The inference is conditional on the assumption that the data are actually generated from this model. This approach does not account for the uncertainty of model selection and thus may render the results more precise than they actually are. This may lead to overly confident inferential conclusions and predictions. And if the selected model is substantively different from the true generating model, the results may even be biased.

Instead of selecting just one model, BMA (Leamer 1978) considers a set of plausible models and bases its inference on averaging across those models, weighing by model probabilities given the observed data. BMA is a principled statistical method that addresses the problem of underestimating or rather ignoring model uncertainty. You may not need model averaging for every data analysis, but even if you need to choose just one model, you may find BMA helpful for selecting the best one available for your data.

See [BMA] [Intro](#) for a general introduction to BMA. In this entry, we focus on BMA for linear regression. In what follows, we present some of the main concepts of BMA following the discussions in [Steel \(2020\)](#), [Moral-Benito \(2015\)](#), and [Hoeting et al. \(1999\)](#).

In a regression setting with p potential predictors, model uncertainty is confined to which predictors should be included in the model (for example, [Steel \[2020\]](#) and [Moral-Benito \[2015\]](#)). There are 2^p possible regression models that include or exclude each of the p predictors in a model. Variable-selection methods such as stepwise regression and information criteria focus on selecting one “best” model for the data according to some criteria. Depending on the application, results based on a single model may be overly optimistic (for example, [Steel \[2020\]](#)).

Unlike variable-selection methods, BMA incorporates (potentially) all models from the considered model space by averaging over it to estimate model parameters and obtain predictions. That is, in the context of a linear regression, BMA would potentially account for all 2^p models in the analysis. When we say “account for all 2^p models”, we mean that BMA will consider these models and adjust parameter estimates for the likelihood of each model. Thus, BMA results incorporate the uncertainty about the model-selection process.

Suppose we have an outcome Y and p predictors X_1, X_2, \dots, X_p . We want to model Y as a linear function of these predictors, but we do not know which ones to include in the model. We can use a BMA linear regression to explore all 2^p models.

Model setup. Consider an $n \times 1$ vector of outcome values $\mathbf{y} = (y_1, y_2, \dots, y_n)'$, an $n \times p$ design matrix \mathbf{X} containing values of p predictors, and an $n \times 1$ vector of ones $\mathbf{1}_n$. Let M_j be a regression model that contains a subset of p_j predictors stored in an $n \times p_j$ design submatrix \mathbf{X}_j . Then, for each $j \in \{1, 2, \dots, 2^p\}$, consider a linear regression M_j ,

$$\mathbf{y} = \alpha \mathbf{1}_n + \mathbf{X}_j \boldsymbol{\beta}_j + \boldsymbol{\epsilon}_j$$

where α is an unknown intercept, $\boldsymbol{\beta}_j$ is a $p_j \times 1$ vector of unknown (M_j -specific) regression coefficients, and $\boldsymbol{\epsilon}_j = (\epsilon_{1,j}, \epsilon_{2,j}, \dots, \epsilon_{n,j})'$ is an $n \times 1$ vector of model-specific error terms, which are independently normally distributed with mean zero and variance σ^2 .

Priors. In a Bayesian linear regression (see [BAYES] [bayes: regress](#)), we assume a prior $p(\alpha, \boldsymbol{\beta}_j, \sigma^2 | M_j)$ for model parameters α , $\boldsymbol{\beta}_j$, and σ^2 , which is conditional on model M_j . In a BMA framework, model M_j itself is considered random and thus assumed to have a discrete prior $P(M_j)$ for $j \in \{1, 2, \dots, 2^p\}$.

A BMA linear regression assumes noninformative priors for α and σ^2 and a Zellner’s g -prior for $\boldsymbol{\beta}_j$. Thus, the prior for regression coefficients is controlled by the g parameter of a Zellner’s g -prior; g can be fixed or random. For a random g , a prior distribution (hyperprior) is specified for g . The g parameter controls the amount of shrinkage of regression coefficients toward zero. Smaller g leads to more shrinkage. There are many choices for a g -prior; see [Priors for parameter \$g\$](#) in [Methods and formulas](#). [Fernández, Ley, and Steel \(2001a\)](#) suggest that the so-called benchmark prior, where $g = \max(n, p^2)$, tends to perform well in a variety of cases with respect to a model’s predictive performance. Other priors suggested in the literature are $g = \sqrt{n}$, local empirical Bayes, and hyper- g priors ([Porwal and Raftery 2022a](#)). The use of hyperpriors is often suggested to deal with data robustness, when small differences in the data can lead to substantive changes in the results. See [Steel \(2020\)](#) and references therein for more discussion.

There are also a number of choices for a model prior $P(M_j)$; see [Priors on the model space](#) in [Methods and formulas](#). A uniform prior, which assumes that each model is equally likely, and a beta-binomial prior with shape parameters of 1, which assumes that models of all sizes are equally likely, are some of the common choices. See [Moral-Benito \(2015\)](#), [Steel \(2020\)](#), and [Fragoso, Bertoli,](#)

and Louzada (2018) for a discussion of various model priors and Ley and Steel (2009), Ley and Steel (2012), and Porwal and Raftery (2022b) for a comparison of performance of different priors.

As with any Bayesian results, BMA results (in particular, PMPs) can be sensitive to the choice of priors. See Steel (2020) for a discussion of the role of priors on both PMPs and posterior inference. Regardless of the chosen prior, you should perform sensitivity analysis using a variety of relevant priors to evaluate their impact on final results.

Estimation. The estimation of PMPs, model probabilities conditional on the observed data, is central to BMA estimation. PMPs are used as weights in the averaging of the model-specific results that produces the final BMA results. How PMPs are estimated depends on how the model space is explored and whether the g parameter is fixed or random.

For a moderate number of predictors, say, $p \leq 24$, model enumeration can be used to explore the entire space of 2^p models. With more predictors, model enumeration becomes less feasible, and an MCMC sampling algorithm, for example, MC3 (Madigan and York 1995), is used to explore the model space.

When g is fixed, analytical formulas are available to compute PMPs. We refer to these PMPs as analytical PMPs, $P_a(M_j|\mathbf{y})$. In the case of sampling, analytical PMPs are conditional on the model space visited by the sampling algorithm. When g is random, what we call a modified MC3 algorithm—MC3 for model space and adaptive Metropolis–Hastings (MH) for g —is used to jointly sample the model space and g . In this case, analytical formulas for PMPs are not available, and PMPs are estimated from the MCMC sample of models by using frequencies. We refer to these PMPs as frequency PMPs, $P_f(M_j|\mathbf{y})$.

Convergence. See *Convergence of BMA*.

Inference. In addition to standard Bayesian posterior inference for model parameters, BMA provides inference for models via PMP and formal assessment of the importance of considered predictors in relation to the outcome via PIP, which is a probability that a predictor is included in a model given the observed data. Models with high PMPs are of interest. And predictors with high PIPs are of interest. See [BMA] [bmastats models](#) and [BMA] [bmastats pip](#).

Posterior inference for model parameters is performed with respect to the posterior distributions of model parameters over all models. For instance, with model enumeration, posterior mean and variance for regression coefficients are computed based on the posterior distribution of β and defined as follows,

$$\beta_{\text{BMA}} = \mu_{\text{BMA}} = E(\beta|\mathbf{y}) = \sum_{j=1}^{2^p} P_a(M_j|\mathbf{y})\mu_j$$

$$\text{Var}(\beta|\mathbf{y}) = \sum_{j=1}^{2^p} P_a(M_j|\mathbf{y}) \{ \text{Var}(\beta_j) + \mu_j\mu_j' \} - \mu_{\text{BMA}}\mu_{\text{BMA}}'$$

where μ_j is the posterior mean of regression coefficients β_j based on model M_j .

Also see *Interpretation of BMA regression coefficients*.

Prediction. The early use of BMA was in the context of prediction. The posterior predictive density of \mathbf{y} over all models is defined as a weighted PMP average of posterior predictive densities of \mathbf{y} conditional on each model (for example, Moral-Benito [2015]). See [BMA] [bmapredict](#) for details.

Regression modeling and model space. As with a standard linear regression, you should also carefully consider the parameterization of the regression function in a BMA linear regression. This essentially relates to the definition of the BMA model space. Most theoretical results for BMA are

developed under the assumption that the “true” model is included in the model space, although Steel (2020) comments that BMA can be shown to be robust to this assumption.

For instance, any interaction and nonlinear terms that might improve the explanatory power of the regression model need to be considered. If they are omitted from the model space at the onset, there is no chance for BMA to explore the models involving these terms. But care should be taken with how to include such terms properly in a BMA regression depending on the research objective; see *Groups of predictors* and *Handling factor variables and interactions*.

Model diagnostics. In addition to MCMC convergence diagnostics as described in *Convergence of BMA*, any model diagnostics such as residual analysis used for a standard linear regression should be considered for a BMA linear regression as well. But because there are multiple models, the application of model checks is not as straightforward for BMA. Ideally, diagnostics should be explored for each model. This may not be feasible with many models. One recommendation in the literature is to perform model checks for the full model before the estimation and check diagnostics for at least the models with high PMP after estimation (Hoeting et al. 1999). Also see Banner and Higgs (2017) for other recommendations.

For various usages and applications of BMA in practice, see *Usage of BMA* in *Remarks and examples* of [BMA] **Intro**. For technical details about BMA computations, see *Methods and formulas*.

Convergence of BMA

As with standard Bayesian estimation, whenever sampling is used, the convergence of BMA needs to be checked before proceeding with the analysis. In addition to standard MCMC convergence diagnostics for model parameters (see *Convergence of MCMC* in *Remarks and examples* of [BAYES] **bayesmh**), the convergence of the model MCMC sample must be established.

For models with many predictors, convergence may be difficult (or even infeasible) to achieve unless the model space is restricted using a strong model prior. An example of a strong model prior is an independent Bernoulli prior, where a small group of predictors is assigned a high probability of inclusion and the rest are assigned a low probability of inclusion. The default model prior used by **bmaregress** specifies an equal probability for a model of any size.

Sampling correlation (Fernández, Ley, and Steel 2001a) is used to evaluate the MCMC convergence of the BMA model. It is defined as the correlation between the analytical and frequency PMPs. It measures the agreement between the expected and observed PMPs. When sampling correlation has a low positive value (less than 10%) or even negative, nonconvergence is suspected. You should review your model specification carefully and potentially increase the MCMC sample size.

Sampling correlation can also be missing. This is always the case when there is only one visited model. It is possible that there is only one plausible model in the BMA model space, which BMA found. In this case, there is no reason to suspect nonconvergence. However, in general, unless the regression model has no predictors, one visited model is insufficient to explore the full model space, and you should not trust the reported results. You may also get a missing sampling correlation when there is an insufficient number of MCMC iterations.

Sampling correlation is not a formal measure of MCMC convergence in BMA. Its precision may vary from one sample to another. In fact, with a random g , there is no reliable way to estimate sampling correlation, because there is no analytical formula for PMP. In this case, sampling correlation is computed based on the harmonic-mean approximation of the analytical PMP distribution and is thus subject to the accuracy of the approximation, in addition to the inherent sampling variability. You should interpret a sampling-correlation value as a guide for BMA convergence rather than a formal assessment of it.

There is no formal way to determine BMA convergence. Sampling correlation is just one way to explore MCMC convergence numerically. You should also look at graphical convergence diagnostics (see [BMA] [bmargin pmp](#)) and use other standard MCMC diagnostic tools (see *Convergence of MCMC* in *Remarks and examples* of [BAYES] [bayesmh](#)).

Interpretation of BMA regression coefficients

To avoid the infamous problem of mixing “apples and oranges” during averaging in BMA, it is important that a quantity being averaged has a common interpretation across all models (for example, [Steel \[2020\]](#) and [Fragoso, Bertoli, and Louzada \[2018\]](#)). The motivation for BMA originally was in the context of predicting new outcome values. Because such predictions have the same interpretation across all models, the application of averaging is justified.

A BMA linear model also provides model-averaged estimates for the regression coefficients, intercept, and error variance. The error variance has a common meaning across the models, so the averaging is applicable. During estimation, BMA recenters predictors to make them orthogonal to the intercept, so the intercept also has the same interpretation across all models. The regression coefficients, however, should be evaluated more carefully.

In one of the comments to [Hoeting et al. \(1999\)](#), [Draper \(1999\)](#) points out that the meaning of the coefficient of X_1 in a regression of Y on X_1 is different from that in a regression of Y on X_1 and X_2 . [Hoeting et al. \(1999\)](#) respond that one can recast BMA into a one-model space by viewing it as a standard Bayesian linear regression including all predictors, in which the prior allows some of the regression coefficients to be zero or close to zero. [Banner and Higgs \(2017\)](#) further investigate the use of BMA in practice for the interpretation of partial regression coefficients and provide some guidance and graphical tools to aid interpretation.

In summary, when the predictors are orthogonal or in the case of a simple linear regression, the (partial) regression coefficients have the same interpretation across models and their averaged BMA estimates are appropriate. This might be rare in practice, especially with observational data. In more realistic situations such as in the presence of collinear predictors or interaction terms, care should be taken with the interpretation of BMA coefficients as partial regression coefficients. In these cases, perhaps the BMA inference should shift toward estimation of marginal effects instead.

In a Bayesian context, the interpretation of regression coefficients, particularly in the presence of collinearity, should also be considered in the context of their prior distribution. As indicated by [Leamer \(1973\)](#), “a well-defined prior distribution can have no problem interpreting the sample evidence.” From this perspective, the interpretation of regression coefficients should account for their prior information, especially in cases when the observed data do not provide sufficient evidence. Of course, the exploration of the sensitivity of the results to the assumed prior becomes even more important in such cases.

Using the bmaregress command

The `bmaregress` command performs BMA for linear regression. It explores the model space either exhaustively, when this is feasible, or by using MCMC. It reports various summaries of the visited models and included predictors, and posterior distributions of model parameters.

The simplest syntax of `bmaregress` is the same as for `regress` (see [R] [regress](#))—you list the dependent and predictor variables following the command:

```
. bmaregress y x1 x2 x3
```

With this specification, each of the three variables x_1 , x_2 , and x_3 will be in and out of the model, that is, will be either included or excluded from the model.

If you wish to always include some of the predictors in the model, you can use the following specification:

```
. bmaregress y (x1 x3, always) x2
```

You can also group predictors so that each group is in and out of the model. This is useful with factor variables and variables that are functions of other variables that you may want to include together in the regression models:

```
. bmaregress y x1 (x2 x3)
```

In the above, x_2 and x_3 will always be included or excluded together. So, technically, `bmaregress` determines the model space by the number of groups p_g . In this example, the model space will include $2^2 = 4$ models and not $2^3 = 8$. Also see [Groups of predictors](#).

In the presence of interactions, `bmaregress` always includes all main effects whenever the corresponding interaction is in the model, but you can change this with the `heredity()` option. See [Handling factor variables and interactions](#).

`bmaregress` uses the default beta-binomial prior with shape parameters of one on the model space, which assumes the uniform prior for the model size, and the default benchmark (fixed) prior for the g parameter. You can change them by specifying the `mprior()` and `gprior()` options, respectively. Default priors are provided for convenience. They are chosen based on the recommendations in the literature, which found them to be fairly uninformative in a variety of cases. But they may not apply to all cases. It is important that you carefully evaluate the choice of priors and specify the priors that are appropriate for your model and research questions. You cannot simply rely on the provided defaults. It is also important that you consider various priors to check the sensitivity of the results to the prior assumptions. See [Priors](#) in [Introduction to BMA for linear regression](#).

By default, `bmaregress` uses model enumeration to explore the model space fully with up to 12 predictors or, more precisely, with up to 12 groups of predictors, ignoring the always group. For more than 12 predictors, it uses the MC3 sampling algorithm. If desired, you can use sampling with 12 predictors or fewer by specifying the `sampling` option. You can also use model enumeration with up to 24 predictors by specifying the `enumeration` option. With a random g , the model space cannot be explored fully, and a modified version of MC3 is used: MC3 is used to sample models, and an adaptive MH, similar to that described in [BAYES] [bayesmh](#), is used to sample g .

When a sampling method is used, `bmaregress` uses 2,500 burn-in iterations and an MCMC sample size of 10,000. You can change this, respectively, with options `burnin()` and `mcmcsize()`. Also, with sampling, the results produced by `bmaregress` are stochastic: they can change from one run of the command to another. You can specify the `rseed()` option for reproducibility.

`bmaregress` also supports various reporting options. For instance, with many predictors or with a random g , you may want to specify the `dots` and related options to see the simulation progress. By default, the predictors are listed in the order from highest to lowest PIP. You can use the `inputorder` option to display them in the order they are specified with `bmaregress`.

Finally, you can use the `saving()` option to save your BMA MCMC results to a file. This can be done during or after estimation. Some postestimation commands such as `bmcoefsample`, `estimates store`, and `estimates save` require that you save your BMA results before running the commands.

As with any MCMC algorithms, the MC3 algorithms require that you check sampling convergence; see [Convergence of BMA](#). You should always use `bmagraph pmp` to explore sampling convergence graphically after `bmaregress`.

You can use `bmastats models` and `bmagraph varmap` to explore model and variable-inclusion summaries and `bmastats pip` to explore variable-inclusion probabilities. `bmastats msize` and `bmagraph msize` provide information about the model size. `bmastats jointness` reports whether pairs of predictors tend to be included in the model together or separately. `bmastats lps` can be used to check the predictive performance of the fitted BMA model and compare it with other potential BMA models. `bmacoefsample` samples regression coefficients and other model parameters from their posterior distributions, and `bmagraph coefdensity` plots these distributions. Finally, if you are interested in a BMA prediction, use `bmapredict`.

There are also two Stata commands that help you prepare your data and specify predictors before your BMA analysis: `splitsample` and `v1`. `splitsample` divides your sample into several random subsamples, which can be used for training, validation, and prediction (testing). `v1` is useful for managing a potentially large set of predictors for use with `bmaregress`. It helps you specify predictors conveniently without typing every variable name. See [D] `splitsample` and [D] `v1` for details.

Groups of predictors

The `bmaregress` command allows you to group predictors using the parentheses notation. In the context of BMA, a group of predictors is treated as one in-and-out term—all predictors in the group are either included or excluded from linear regression models. The model space of a BMA linear regression is thus defined by the grouping of predictors. The number of groups p_g determines the size of the model space, 2^{p_g} . The model prior distribution, specified with option `mprior()`, is also imposed on the space of groups.

For example, suppose we have three predictors `x1`, `x2`, and `x3`, and `x2` and `x3` are grouped together:

```
. bmaregress y x1 (x2 x3)
```

The model space comprises four possible regression models: no predictors, only `x1`, only `x2` and `x3`, and all variables `x1`, `x2`, and `x3`. The default model prior distribution is beta-binomial with shape parameters of 1.

We can use the `mprior()` option to specify, say, a binomial prior with the following prior probabilities of inclusion of predictors and groups of predictors:

```
. bmaregress y x1 (x2 x3), mprior(binomial x1 0.4 (x2 x3) 0.6)
```

In the above command, we set the probability of inclusion to 0.4 for `x1` and to 0.6 for the group that includes `x2` and `x3`.

In the output of `bmaregress`, the `Group` column contains the information about the groups of predictors.

Grouping restricts the model space and may diminish the predictive performance of a BMA linear regression, so it should be used thoughtfully.

Handling factor variables and interactions

The levels of a categorical predictor, excluding the base level, are commonly treated as independent in-and-out terms in variable-selection methods. Suppose a categorical predictor `a` has four levels, with one being the base level, and is included as a factor variable in the model:

```
. bmaregress y i.a
```


The above introduces three regression terms: 2.a, 3.a, and 4.a, which will be in and out of the model independently. The model space will then include the regression models `regress y 2.a`, `regress y 3.a`, `regress y 4.a`.

If you wish to treat these three terms as one group, you can type

```
. bmaregress y (i.a)
```

or you can use the `groupfv` option,

```
. bmaregress y i.a, groupfv
```

In this case, the model space will include only the regression model `regress y 2.a 3.a 4.a` and the constant-only model.

The `groupfv` option will group all specified factor variables. For example, the specification

```
. bmaregress y i.a i.b i.a#i.b, groupfv
```

will introduce three groups: (i.a), (i.b), and (i.a#i.b).

However, the following specification will group all interactions and main effects in one group (i.a##i.b):

```
. bmaregress y i.a##i.b, groupfv
```

If you include an interaction in your BMA model, you need to consider the relationship between this interaction and the main effects. Do you want the interaction to be included in regression models independently of the main effects or not? If your goal is inference and interpretation of coefficients, you might want to include the main effects whenever the interaction is included. For prediction, you might choose to keep the model space larger (by allowing the interaction terms to be included without main effects) for more optimal prediction.

This relationship between the main effects and interactions is controlled by the `heredity()` option. By default, `heredity(strong)` is assumed, which does not allow the interactions to be in a regression model without all corresponding main effects. You can specify `heredity(weak)`, which will include at least one of the main effects together with the interaction. Or you can specify `heredity(none)`, in which case the interactions and main effects will be included in a model independently.

For instance, consider binary predictors a and b. Under strong heredity,

```
. bmaregress y i.a i.b i.a#i.b, heredity(strong)
```

will consider five models that include 1) only intercept, 2) i.a, 3) i.b, 4) i.a and i.b, and 5) i.a, i.b, and i.a#i.b. Note that the intercept will also be included in all models.

Under weak heredity,

```
. bmaregress y i.a i.b i.a#i.b, heredity(weak)
```

will additionally consider two more models that include 6) i.a and i.a#i.b and 7) i.b and i.a#i.b.

With no heredity, `heredity(none)`, a model with only an interaction term i.a#i.b will also be considered. This gives us a total of eight models.

Getting started examples

In our first series of examples, we use a small dataset, `performance`, surveying the employee satisfaction with their supervisors in a large financial organization. The dataset is adapted from [Chatterjee and Hadi \(2012, sec. 3.3\)](#). It contains 7 variables and 30 observations, representing 30 different departments in the surveyed organization.

```
. use https://www.stata-press.com/data/r18/performance
(Data on employee satisfaction with supervisor)
. describe
Contains data from https://www.stata-press.com/data/r18/performance.dta
Observations:      30      Data on employee satisfaction
                    with supervisor
Variables:         7      23 Feb 2023 12:57
                    (_dta has notes)
```

| Variable name | Storage type | Display format | Value label | Variable label |
|-------------------------|--------------|----------------|-------------|--|
| <code>rating</code> | byte | %8.0g | | Overall rating of supervisor's performance |
| <code>complaints</code> | byte | %8.0g | | Handling of employee complaints |
| <code>privileges</code> | byte | %8.0g | | Does not allow special privileges |
| <code>learning</code> | byte | %8.0g | | Opportunity to learn new things |
| <code>raises</code> | byte | %8.0g | | Raises based on performance |
| <code>critical</code> | byte | %8.0g | | Supervisor is too critical |
| <code>advance</code> | byte | %8.0g | | Rating of employee's advancement |

Sorted by:

The outcome of interest is the overall department rating with values in the 0 to 100 range. The observed values for the dependent variable `rating` are between 40 and 85. They are computed based on the percentage of favorable survey responses from each department. The other variables record the percentages of favorable responses to each of six survey questions. Although all variables have integer values, we regard them as continuous and model the response using a linear regression. In their analysis of this dataset in [Chatterjee and Hadi \(2012\)](#), the authors conclude that the `complaints` and `learning` variables explain most of the variation in the response. Let's apply BMA to this dataset.

▷ Example 1: BMA linear regression (model enumeration)

Using the performance dataset described above, we apply BMA to `rating` with all other variables as predictors by using the `bmaregress` command. We use *varlist* notation `complaints-advance` to refer to all variables in the dataset between `complaints` and `advance`.

```
. bmaregress rating complaints-advance
Enumerating models ...
Computing model probabilities ...

Bayesian model averaging      No. of obs      =    30
Linear regression             No. of predictors =     6
Model enumeration              Groups          =     6
                               Always            =     0

Priors:                        No. of models   =    64
  Models: Beta-binomial(1, 1)   For CPMP >= .9 =    10
  Cons.: Noninformative        Mean model size =   1.699
  Coef.: Zellner's g
    g: Benchmark, g = 36       Shrinkage, g/(1+g) = 0.9730
  sigma2: Noninformative      Mean sigma2     = 52.302
```

| rating | Mean | Std. dev. | Group | PIP |
|------------|-----------|-----------|-------|---------|
| complaints | .7052859 | .1224289 | 1 | .99973 |
| learning | .0603014 | .1285281 | 3 | .25249 |
| advance | -.0167921 | .073883 | 6 | .13148 |
| privileges | -.0074174 | .0488635 | 2 | .10998 |
| raises | .0070789 | .0670475 | 4 | .10642 |
| critical | .0009713 | .0437848 | 5 | .098534 |
| Always | | | | |
| _cons | 14.8472 | 7.874219 | 0 | 1 |

Note: Coefficient posterior means and std. dev. estimated from 64 models.

Note: Default priors are used for models and parameter g .

The BMA model summary and regression results are displayed in the header and estimation table, which we describe in detail below.

Header. The header reports 30 observations and $p = 6$ predictors. By default, `Model enumeration` is used, so `bmaregress` visited all possible $2^6 = 64$ models. Of those models, 10 contribute to the cumulative PMP (CPMP) of at least 0.9. The mean model size is 1.699, which suggests that on average, the models included roughly two predictors.

The *default priors* are as described in *Using the `bmaregress` command*. `bmaregress` always uses the same noninformative priors for the constant and error variance, which are proportional to $1/\sigma^2$, and a Zellner's g -prior for regression coefficients. But there are several options for the model and parameter g priors. The default model prior is `Beta-binomial(1, 1)`, which assigns an equal probability for each model size. The default g -prior is the `Benchmark` prior with a fixed value for $g = \max(n, p^2) = \max(30, 36) = 36$, following [Fernández, Ley, and Steel \(2001a\)](#). This corresponds to the shrinkage parameter $\delta = g/(1 + g) = 0.973$, where $\delta = 1$ means no shrinkage and $\delta = 0$ means complete shrinkage (a coefficient is essentially forced to be zero). In this example, we assume little shrinkage a priori. But we explore the effect of different priors on these data in examples 10, 11, and 12.

From the header, the posterior mean estimate of the error variance, `Mean sigma2`, is 52.3.

`bmaregress` uses model enumeration by default when there are few predictors or, more precisely, groups of predictors (no more than 12) and when g is fixed.

Estimation table. The estimation table reported by `bmaregress` includes estimates of posterior means and standard deviations of coefficients for each predictor, as well as predictors’ estimated posterior inclusion probabilities, PIPs. In the case of enumeration, as in our example, these estimates are based on analytical formulas and thus are exact. The table also reports the grouping information—each variable is its own group in our example.

The `complaints` predictor has, by far, the highest PIP of all predictors—the total posterior probability of the models that include `complaints` is almost 1, or 0.99973 to be exact. It is followed by `learning` with a PIP of 0.25. All other predictors have lower PIPs between 0.13 and 0.1. Both variables have positive posterior mean coefficients. Thus, we can conclude that a better handling of complaints, `complaints`, and more opportunities to learn new things, `learning`, appear to positively affect the rating scores. These findings agree with [Chatterjee and Hadi \(2012\)](#).

In a BMA regression, the constant term is always included, so it is displayed in a separate equation labeled `Always`. If we specify any other predictors to be included in all models, they will be listed in this same equation. The intercept or, more generally, the `Always` group does not affect the grouping information.

Notes. The command concludes with a couple of notes. The first note reminds us that the reported posterior means and standard deviations are estimated from 64 visited models. We need to interpret these averaged estimates thoughtfully; see [Interpretation of BMA regression coefficients](#). We are also reminded that the default priors were used for models and parameter g ; see [Priors in Introduction to BMA for linear regression](#) and discussion about the [default priors](#) in [Using the bmaregress command](#). With many predictors, you might also see a note about some predictors being omitted from the output because of their PIP being less than 0.01. You can use the `allcoef` option (or, equivalently, `pipcutoff(0)`) to see all predictors or specify a higher cutoff in `pipcutoff()` to further restrict the list of displayed predictors.

Displaying results in input order. By default, `bmaregress` displays results according to PIP, from highest to lowest. You can use the `inputorder` option to display results in the input variable order. This might be useful when you want to compare results with other Stata commands such as `regress`.

```
. bmaregress, noheader inputorder
```

| rating | Mean | Std. dev. | Group | PIP |
|-------------------------|-----------|-----------|-------|---------|
| <code>complaints</code> | .7052859 | .1224289 | 1 | .99973 |
| <code>privileges</code> | -.0074174 | .0488635 | 2 | .10998 |
| <code>learning</code> | .0603014 | .1285281 | 3 | .25249 |
| <code>raises</code> | .0070789 | .0670475 | 4 | .10642 |
| <code>critical</code> | .0009713 | .0437848 | 5 | .098534 |
| <code>advance</code> | -.0167921 | .073883 | 6 | .13148 |
| <code>Always</code> | | | | |
| <code>_cons</code> | 14.8472 | 7.874219 | 0 | 1 |

Note: Coefficient posterior means and std. dev. estimated from 64 models.

Note: Default priors are used for models and parameter g .

Displaying PIP. Instead of replaying all the results from `bmaregress`, we can display only the PIP estimates by using the `bmastats pip` command.

```
. bmastats pip
Posterior inclusion probability (PIP)
No. of obs      =    30
No. of predictors =    6
      Groups =    6
      Always =    0
      Reported =    6
No. of models   =   64
Mean model size = 1.699
```

| | PIP | Group |
|------------|---------|-------|
| complaints | .99973 | 1 |
| learning | .25249 | 3 |
| advance | .13148 | 6 |
| privileges | .10998 | 2 |
| raises | .10642 | 4 |
| critical | .098534 | 5 |
| Always | | |
| _cons | 1 | 0 |

Note: Using analytical PMPs.

`bmastats pip` is particularly useful if we would like to see PIP only for a subset of predictors.

```
. bmastats pip complaints learning
Posterior inclusion probability (PIP)
No. of obs      =    30
No. of predictors =    6
      Groups =    6
      Always =    0
      Reported =    2
No. of models   =   64
Mean model size = 1.699
```

| | PIP | Group |
|------------|--------|-------|
| complaints | .99973 | 1 |
| learning | .25249 | 3 |
| Always | | |
| _cons | 1 | 0 |

Note: Using analytical PMPs.

Saving BMA results. Before we proceed, let's store our current estimation results. Similarly to other Bayesian estimation commands, we first need to save BMA simulation or, in this example, enumeration results in a dataset. We can then use `estimates store` or `estimates save` (see [R] [estimates](#)) to store BMA estimation results.

```
. bmaregress, saving(bmadata_enum)
note: file bmadata_enum.dta saved.
. estimates store bmareg
```

We saved the BMA enumeration results in the `bmadata_enum` dataset, and we stored the BMA estimation results as `bmareg`. Remember to remove the generated dataset when it is no longer needed; see [example 14](#).



▷ Example 2: Exploring high-posterior probability models

Exploring models with high PMPs is an integral part of BMA inference. We can use `bmastats models` to explore individual models after `bmaregress`.

```
. bmastats models
Computing model probabilities ...
Model summary          Number of models:
                        Visited = 64
                        Reported = 5
```

| | Analytical PMP | Model size |
|--------|----------------|------------|
| Rank 1 | .5556 | 1 |
| Rank 2 | .1169 | 2 |
| Rank 3 | .04072 | 2 |
| Rank 4 | .03932 | 2 |
| Rank 5 | .03804 | 2 |

Variable-inclusion summary

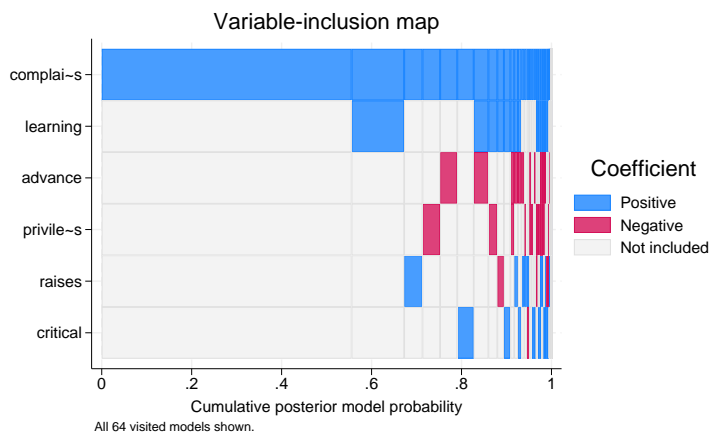
| | Rank 1 | Rank 2 | Rank 3 | Rank 4 | Rank 5 |
|------------|--------|--------|--------|--------|--------|
| complaints | x | x | x | x | x |
| learning | | x | | | |
| raises | | | x | | |
| privileges | | | | x | |
| advance | | | | | x |

Legend:
x - estimated

By default, `bmastats models` lists the top five models ranked by PMP along with the table listing the included predictors for each model. The top ranked model has a PMP of 0.56 and contains only one predictor, `complaints`. The second-ranked model adds `learning` as a predictor and has a much lower PMP of 0.12. It appears that the default BMA model for these data tends to favor regression models with two predictors, one of which is always `complaints`.

The variable-inclusion summary can be explored more conveniently visually by using the `bmagraph varmap` command.

```
. bmagraph varmap
Computing model probabilities ...
```



By default, the first top 100 models are plotted. In our example, this means that all 64 models are shown on the graph. We can see that the top model contains only `complai-s` with a PMP or, equivalently, CPMP of roughly 0.56 (the width of the first bar). The next highest-PMP model contains both `complai-s` and `learning`, with a CPMP of roughly 0.67 (the sum of widths of the first two bars). Essentially all models include `complai-s`, and `learning` is the next most frequently included predictor. Predictors `raises` and `critical` appear in some models too. All of these predictors have positive coefficients, although the latter two change the sign for some models with small PMPs. Predictors `advance` and `privileges` are included in some models too, but they have negative coefficients in all of those models. See [BMA] `bmagraph varmap` for details.

In the output header, `bmaregress` reported that there are 10 models that contribute to the CPMP of 0.9. We can see the actual CPMPs for each model by using the `cumulative()` option:

```
. bmastats models, cumulative(0.9)
Computing model probabilities ...
Model summary          Number of models:
                        Visited = 64
                        Reported = 10
```

| | Analytical CPMP | Model size |
|------|-----------------|------------|
| Rank | | |
| 1 | .5556 | 1 |
| 2 | .6724 | 2 |
| 3 | .7132 | 2 |
| 4 | .7525 | 2 |
| 5 | .7905 | 2 |
| 6 | .8271 | 2 |
| 7 | .8598 | 3 |
| 8 | .8796 | 3 |
| 9 | .8942 | 3 |
| 10 | .9086 | 3 |

Variable-inclusion summary

| | Rank 1 | Rank 2 | Rank 3 | Rank 4 | Rank 5 | Rank 6 |
|------------|--------|--------|--------|--------|--------|--------|
| complaints | x | x | x | x | x | x |
| learning | | x | | | | |
| raises | | | x | | | |
| privileges | | | | x | | |
| advance | | | | | x | |
| critical | | | | | | x |

Legend:

x - estimated

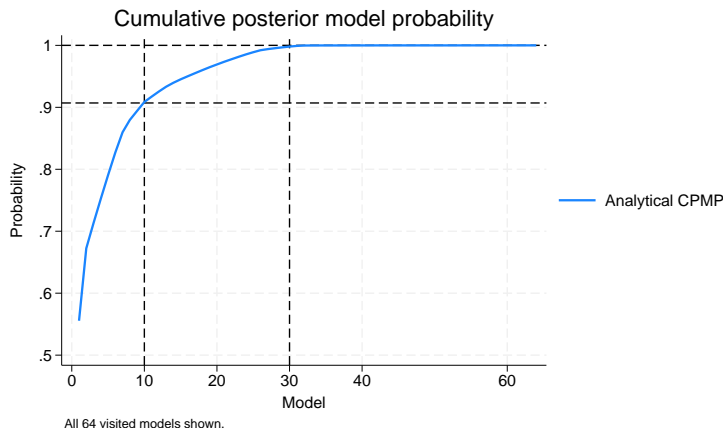
| | Rank 7 | Rank 8 | Rank 9 | Rank 10 |
|------------|--------|--------|--------|---------|
| complaints | x | x | x | x |
| learning | x | x | x | x |
| raises | | | x | |
| privileges | | x | | |
| advance | x | | | |
| critical | | | | x |

Legend:

x - estimated

We can also plot the CPMPs by using the `bmagraph pmp` command with the `cumulative` option. We also specify options to add several reference lines to the graph:

```
. bmagraph pmp, cumulative xline(10 30) yline(.907 1) xlabel(10 30, add)
note: frequency estimates not available with model enumeration; option
nofreqline implied.
```



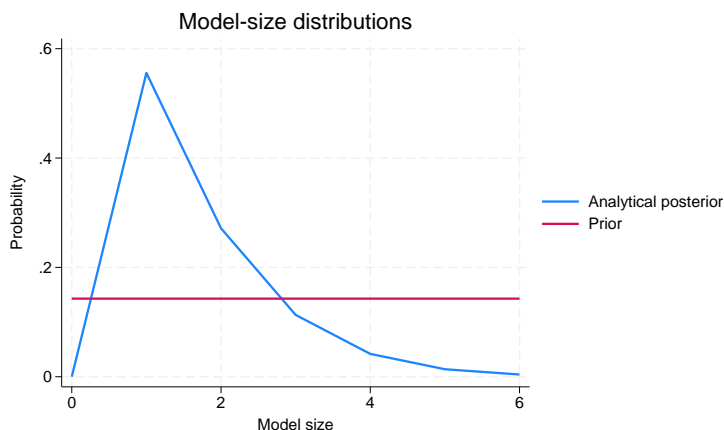
Again, the default top 100 models and thus all 64 models in our example are shown on the plot. We can see that the CPMP of about 0.9 is reached with 10 models and of 1 with roughly 30 models, so the rest of the visited models have essentially 0 PMPs and do not contribute to the averaged results.

With sampling, when an MCMC model sample is available, `bmagraph pmp` also reports the frequency PMP distribution estimated from the MCMC sample. This estimate is not available with model enumeration.

Example 3: Model-size distribution

Another aspect of exploring the model space is the model size weighted by PMP. It is useful to compare the prior and posterior distributions of the size of the visited models.

```
. bmagraph msize
note: frequency posterior model-size distribution not available.
```



The default beta-binomial prior is uniform over the model size. Compared with the prior, the posterior prior is skewed to the left, favoring models with fewer predictors. In fact, the mode of the distribution corresponds to the model with only one predictor, which we know is `complaints`. Thus, the data suggest more parsimonious models than our prior expectation.

Instead of the entire distribution, we can use `bmastats msize` to explore the summaries of the model-size distributions.

```
. bmastats msize
Model-size summary
Number of models = 64
Model size:
  Minimum = 0
  Maximum = 6
```

| | Mean | Median |
|------------|--------|--------|
| Prior | | |
| Analytical | 3.0000 | 3 |
| Posterior | | |
| Analytical | 1.6986 | 1 |

Note: Frequency summaries not available.

The posterior mean size is the same as the one reported by `bmaregress` in the header. The posterior mean model size of 1.7 is smaller than the assumed prior mean model size of 3.

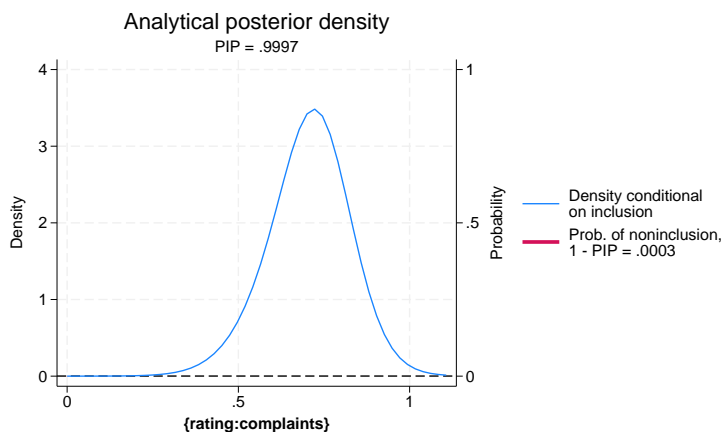
► Example 4: Posterior distributions of regression coefficients

The `bmaregress` command computes and reports only the posterior means and standard deviations of the regression coefficients. But we can use `bmagraph coefdensity` to plot the entire posterior densities for the regression coefficients.

For a fixed g , as in our example, the posterior distributions for the regression coefficients can be computed analytically, so we can use `bmagraph coefdensity` directly after `bmaregress`. With a random g , the analytical computation is not available, and the MCMC sampling is needed to approximate these distributions. In that case, the `bmacoefsample` command needs to be run first to obtain posterior samples of regression coefficients.

Let's look at the distributions of regression coefficients for `complaints` and `learning`. Similarly to other Stata Bayesian commands, we use the curly-braces notation to refer to model parameters—the regression coefficients here:

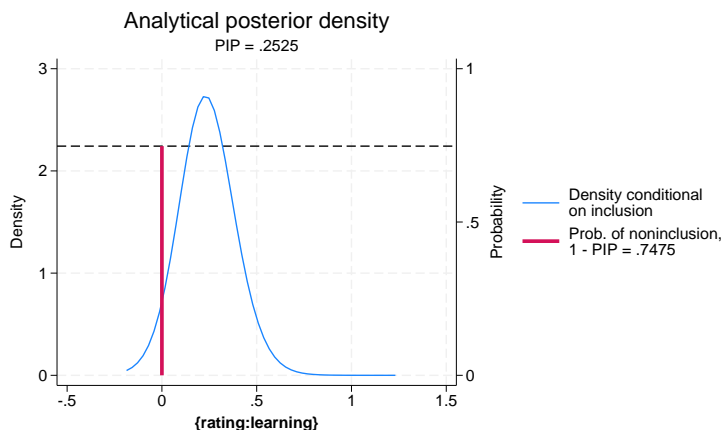
```
. bmagraph coefdensity {complaints}
```



The posterior density of a regression coefficient is a mixture of a point mass at zero, which represents the probability of not being included in the model and a continuous density conditional on being included. For coefficient `{complaints}` (or using its full name `{rating:complaints}`), the probability of noninclusion is very low, 0.0003, so the red line that represents it is not even visible on the graph. So the posterior density of `{complaints}` is essentially a continuous density, with a mean of roughly 0.7 and with a slight skewness to the left. Most of the mass of the distribution is between roughly 0.025 and 1.1, away from 0.

Let's plot the posterior density for {learning}:

```
. bmagrph coefdensity {learning}
```



The probability of inclusion for {learning} is about 0.25, so we see the red vertical line with the horizontal reference line at a noninclusion probability of roughly $1 - 0.25 = 0.75$. Conditional on the inclusion, the continuous density has its mass between roughly -0.2 and 0.7 , which includes zero.

The posterior means and standard deviations reported by **bmaregress** are computed with respect to the above mixtures of distributions.

◀

► Example 5: Credible intervals

The analytical formulas for posterior credible intervals (CrIs) are not as straightforward as for the posterior means and standard deviations, so **bmaregress** does not report them by default. But they can be computed based on a sample from the posterior distributions of regression coefficients. The **bmcoefsample** command (see [BMA] **bmcoefsample**) generates such samples. Once the posterior samples of regression coefficients are available, we can use a standard Bayesian postestimation command, **bayesstats summary** (see [BAYES] **bayesstats summary**), to report the posterior summaries for regression coefficients, including CrIs. To run **bmcoefsample**, we must first save the MCMC simulation dataset from **bmaregress**, which we already did in [example 1](#).

```
. bmacroefsample, rseed(18)
Simulation (10000): ....5000....10000 done
. bayesstats summary
Posterior summary statistics                                MCMC sample size =    10,000
```

| | Mean | Std. dev. | MCSE | Median | Equal-tailed | |
|------------|-----------|-----------|---------|----------|----------------------|----------|
| | | | | | [95% cred. interval] | |
| rating | | | | | | |
| complaints | .7046698 | .1224187 | .001224 | .7098586 | .4528384 | .9331236 |
| privileges | -.0076884 | .0498252 | .000491 | 0 | -.1663752 | .0341648 |
| learning | .0601684 | .1283288 | .001288 | 0 | 0 | .4350166 |
| raises | .0070129 | .069632 | .000675 | 0 | -.077316 | .2114686 |
| critical | .0009327 | .0442536 | .000443 | 0 | -.08034 | .1035208 |
| advance | -.016395 | .073175 | .000732 | 0 | -.2646079 | .0299074 |
| _cons | 14.92624 | 7.832332 | .078323 | 14.97213 | -1.027763 | 30.11586 |
| sigma2 | 52.113 | 14.80086 | .148009 | 49.78668 | 30.43213 | 87.38376 |
| g | 36 | 0 | 0 | 36 | 36 | 36 |

The results above are posterior summaries based on the MCMC samples of model parameters from their respective posterior distributions. The MCMC estimates of posterior means and standard deviations for regression coefficients are very similar to the exact values reported by `bmaregress`. But `bayesstats summary` additionally reports CrIs. The equal-tailed CrIs are reported by default, but we can request the highest posterior density (HPD) CrIs instead:

```
. bayesstats summary {complaints} {learning}, hpd
Posterior summary statistics                                MCMC sample size =    10,000
```

| rating | Mean | Std. dev. | MCSE | Median | HPD | |
|------------|----------|-----------|---------|----------|----------------------|----------|
| | | | | | [95% cred. interval] | |
| complaints | .7046698 | .1224187 | .001224 | .7098586 | .4584306 | .9362436 |
| learning | .0601684 | .1283288 | .001288 | 0 | 0 | .3942063 |

We used the `hpd` option to report HPD CrIs and requested results only for regression coefficients `{complaints}` and `{learning}`. (To distinguish between the actual variable names and the regression coefficients associated with those variables, `bayesstats summary` uses the `{}` specification.)

► Example 6: Comparison with standard linear regression

Let's redisplay our earlier BMA results here for convenience:

```
. bmaregress, noheader inputorder
```

| rating | Mean | Std. dev. | Group | PIP |
|------------|-----------|-----------|-------|---------|
| complaints | .7052859 | .1224289 | 1 | .99973 |
| privileges | -.0074174 | .0488635 | 2 | .10998 |
| learning | .0603014 | .1285281 | 3 | .25249 |
| raises | .0070789 | .0670475 | 4 | .10642 |
| critical | .0009713 | .0437848 | 5 | .098534 |
| advance | -.0167921 | .073883 | 6 | .13148 |
| Always | | | | |
| _cons | 14.8472 | 7.874219 | 0 | 1 |

Note: Coefficient posterior means and std. dev. estimated from 64 models.

Note: Default priors are used for models and parameter g .

We can compare our BMA findings with the results from a standard linear regression (see [\[R\] regress](#)):

```
. regress rating complaints-advance
```

| Source | SS | df | MS | Number of obs | = | 30 |
|----------|------------|----|------------|---------------|---|--------|
| Model | 3147.96634 | 6 | 524.661057 | F(6, 23) | = | 10.50 |
| Residual | 1149.00032 | 23 | 49.9565359 | Prob > F | = | 0.0000 |
| | | | | R-squared | = | 0.7326 |
| | | | | Adj R-squared | = | 0.6628 |
| Total | 4296.96667 | 29 | 148.171264 | Root MSE | = | 7.068 |

| rating | Coefficient | Std. err. | t | P> t | [95% conf. interval] |
|------------|-------------|-----------|-------|-------|----------------------|
| complaints | .6131876 | .1609831 | 3.81 | 0.001 | .2801687 .9462066 |
| privileges | -.0730501 | .1357247 | -0.54 | 0.596 | -.3538181 .2077178 |
| learning | .3203321 | .1685203 | 1.90 | 0.070 | -.0282787 .668943 |
| raises | .0817321 | .2214777 | 0.37 | 0.715 | -.3764293 .5398936 |
| critical | .0383814 | .1469954 | 0.26 | 0.796 | -.2657018 .3424647 |
| advance | -.2170567 | .1782095 | -1.22 | 0.236 | -.5857111 .1515977 |
| _cons | 10.78708 | 11.58926 | 0.93 | 0.362 | -13.18713 34.76128 |

As expected, the coefficient estimates for `complaints` are similar between the two commands, because `complaints` was included in almost all models by `bmaregress`. The PIP of 0.9997 is comparable “in spirit” with the low p -value of 0.001 from `regress`, which suggests that `complaints` is an important predictor of `rating`. Unlike the p -value, however, we can interpret PIP as how likely (or unlikely, $1 - \text{PIP}$) it is for `complaints` to be included in the model. In general, we would expect the coefficient estimates between `bmaregress` and `regress` to be similar for predictors with high PIP (in the absence of collinearity).

For regression coefficients with lower PIP, we see the effect of shrinking toward zero by `bmaregress`, which is reasonable—one would expect that the effect of weak predictors should be downweighted. For example, the coefficient for `learning` from `bmaregress` is 0.06, while the one from `regress` is 0.32.

We can also compare posterior standard deviations from `bmaregress` with standard errors from `regress`. Both represent the uncertainty in the coefficient estimates. The `Std. dev.` for `complaints` from `bmaregress` is 0.12 and the `Std. err.` from `regress` is 0.16. Unlike standard errors, the posterior standard deviations additionally incorporate the uncertainty about the inclusion of the specified predictors in the model.

The 95% equal-tailed CrI for complaints from [example 5](#) is [0.45, 0.93] and is narrower than the 95% confidence interval (CI) of [0.28, 0.95]. Unlike the CI, CrI can be interpreted as the range to which the coefficient for complaints belongs with the 0.95 probability. For {learning}, the difference between CrI and CI is larger, as expected for predictors with lower PIPs.

If we force all variables to always be in the model, which we can do by specifying all the predictors in a group with the `always` suboption, our BMA model will mimic the regression results more closely.

```
. bmaregress rating (complaints-advance, always)
Enumerating models ...
Computing model probabilities ...
Bayesian model averaging      No. of obs      =    30
Linear regression            No. of predictors =     6
Model enumeration                Groups =     0
                                   Always =     6
Priors:                        No. of models   =     1
  Models: Beta-binomial(1, 1)   For CPMP >= .9 =     1
  Cons.: Noninformative        Mean model size =  6.000
  Coef.: Zellner's g
    g: Benchmark, g = 36       Shrinkage, g/(1+g) = 0.9730
  sigma2: Noninformative      Mean sigma2      = 45.707
```

| rating | Mean | Std. dev. | Group | PIP |
|------------|-----------|-----------|-------|-----|
| Always | | | | |
| complaints | .596615 | .1518883 | 0 | 1 |
| privileges | -.0710758 | .1280569 | 0 | 1 |
| learning | .3116745 | .1589997 | 0 | 1 |
| raises | .0795232 | .2089652 | 0 | 1 |
| critical | .0373441 | .1386909 | 0 | 1 |
| advance | -.2111903 | .1681415 | 0 | 1 |
| _cons | 12.24238 | 10.9364 | 0 | 1 |

Note: Coefficient posterior means and std. dev. estimated from 1 model.
 Note: Default priors are used for models and parameter *g*.

There is only one model and all predictors have PIPs of 1. The above model corresponds to the BMA model with the highly informative model prior distribution that assigns the probability of 1 to the full model and 0 to all other models. Equivalently, this prior assumes that the probability of inclusion for each predictor is exactly 1. We investigate the effect of priors on the results in more detail in [examples 10, 11, and 12](#). The above model is also equivalent to a Bayesian linear regression with noninformative priors for the error variance and intercept and with a Zellner's *g*-prior for the regression coefficients.



► Example 7: Jointness of predictors

In BMA, in addition to exploring the importance of individual predictors, we can investigate whether this importance depends on the presence of other predictors across the models. The tendency of the predictors to appear together or separately in the models is known as jointness. The `bmastats jointness` command computes various jointness measures for pairs of predictors.

As a quick demonstration, let's investigate the jointness between, for instance, `complaints` and `raises`.

```
. bmastats jointness complaints raises
Variables: complaints raises
```

| | Jointness |
|-------------------|-----------|
| Doppelhofer-Weeks | -2.388135 |
| Ley-Steel type 1 | .1062777 |
| Ley-Steel type 2 | .1189158 |
| Yule's Q | -.831836 |

Notes: Using analytical PMPs. See `thresholds`.

`bmastats jointness` reports four measures of jointness. Based on the thresholds described in *Remarks and examples* in [BMA] **bmastats jointness**, such as $-2.39 < -2$ for the Doppelhofer-Weeks measure, all four measures agree that the two predictors are disjoint or the so-called substitutes. This means that when one is included in the model, the inclusion of the other does not provide any additional information for explaining the outcome. See [BMA] **bmastats jointness** for more information and [example 20](#) for another example.

◀

► Example 8: Exploring model space using MC3 (model sampling)

For models with many predictors, complete enumeration of all possible models becomes infeasible. The alternative is to use MCMC to sample the model space. The MCMC model composition sampling, MC3 (Madigan and York 1995), is commonly used in BMA to explore the model space.

In `bmaregress`, MC3 sampling can be requested by specifying the `sampling` option. The MC3 sampling is actually the default when the number of predictors (or groups of predictors) is greater than 12.

Because MC3 sampling is stochastic, for reproducibility, we need to specify a random-number seed, for example, `rseed(18)`. The sampling includes the burn-in phase, during which the model space is explored for models with high posterior probabilities, followed by an active sampling phase, during which all visited models are saved and accounted for during estimation.

```

. bmaregress rating complaints-advance, sampling rseed(18)
Burn-in ...
Simulation ...
Computing model probabilities ...
Bayesian model averaging
Linear regression
MC3 sampling
No. of obs = 30
No. of predictors = 6
Groups = 6
Always = 0
No. of models = 32
For CPMP >= .9 = 10
Mean model size = 1.699
Burn-in = 2,500
MCMC sample size = 10,000
Acceptance rate = 0.2417
Shrinkage, g/(1+g) = 0.9730
Mean sigma2 = 52.292

Priors:
Models: Beta-binomial(1, 1)
Cons.: Noninformative
Coef.: Zellner's g
g: Benchmark, g = 36
sigma2: Noninformative
Sampling correlation = 0.9990

```

| rating | Mean | Std. dev. | Group | PIP |
|------------|-----------|-----------|-------|---------|
| complaints | .705479 | .1218881 | 1 | 1 |
| learning | .0601919 | .1282869 | 3 | .25234 |
| advance | -.0167514 | .0737415 | 6 | .13141 |
| privileges | -.0074265 | .048844 | 2 | .10996 |
| raises | .0069949 | .0666406 | 4 | .10629 |
| critical | .0009699 | .0437742 | 5 | .098526 |
| Always | | | | |
| _cons | 14.84478 | 7.871046 | 0 | 1 |

Note: Coefficient posterior means and std. dev. estimated from 32 models.

Note: Default priors are used for models and parameter g .

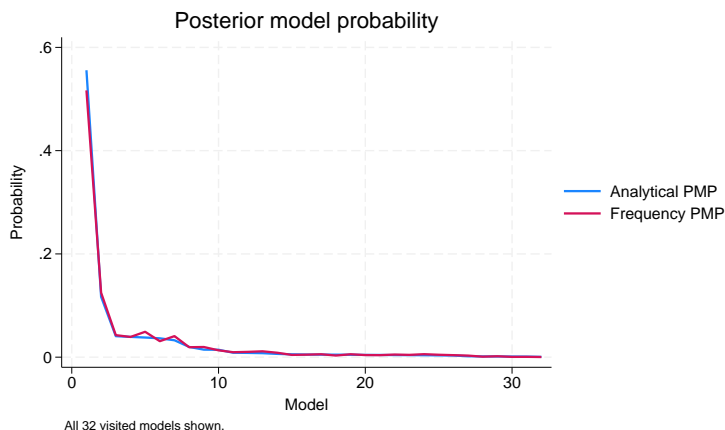
bmaregress now uses **MC3 sampling**. The header additionally reports standard MCMC summaries, including the number of burn-in and MCMC iterations and the acceptance rate. The sampling correlation is also reported. It is used to check convergence; see [Convergence of BMA](#).

The reported sampling correlation, 0.9990, is very close to 1, which suggests that the sampling algorithm has converged and the sample of models approximates the true model posterior distribution well. Consequently, the posterior mean and standard deviation estimates are very close to their exact values obtained by enumeration in [example 1](#). The same is true for the PIP estimates, which match their exact counterparts closely.

► Example 9: Checking BMA convergence

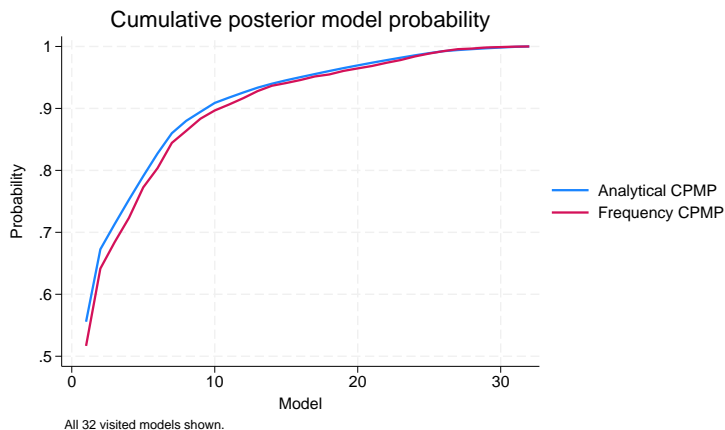
A graphical summary of the MC3 convergence is provided by the `bmagraph pmp` command. It shows the analytical and MCMC sampling probabilities of the visited models, ordered decreasingly by their PMPs. Upon convergence, these two curves should overlap closely, as is the case in our example.

```
. bmagraph pmp
```



We can also explore the CPMPs by specifying the `cumulative` option. The analytical and sampling cumulative probabilities overlap closely too.

```
. bmagraph pmp, cumulative
```



The cumulative graph also shows the contributions of the top PMP models. In our example, the top 6 models contribute to about 80% of the total probability mass on the model space.

▷ Example 10: BMA linear regression using different g-priors

As we mentioned in *Using the bmaregress command*, `bmaregress` provides default priors for convenience. It is important to explore other available prior choices during your analysis. Here we focus on the *g*-priors, and we explore the model priors in [example 11](#).

By default, `bmaregress` uses the benchmark prior from [Fernández, Ley, and Steel \(2001a\)](#), which is $g = \max(n, p^2)$, where $g = n$ corresponds to the unit-information prior and $g = p^2$ corresponds to the risk inflation criterion prior. Because the number of observations, 30, is less than the number of predictors squared, the benchmark *g*-prior is equivalent to using the risk inflation criterion, `gprior(ric)`.

```
. bmaregress rating complaints-advance, gprior(ric) saving(bmadata_ric)
Enumerating models ...
Computing model probabilities ...
Bayesian model averaging                No. of obs      =      30
Linear regression                       No. of predictors =      6
Model enumeration                       Groups         =      6
                                         Always        =      0
Priors:                                  No. of models   =     64
  Models: Beta-binomial(1, 1)             For CPMP >= .9 =     10
  Cons.: Noninformative                  Mean model size =  1.699
  Coef.: Zellner's g
      g: Risk inflation, g = 36           Shrinkage, g/(1+g) = 0.9730
  sigma2: Noninformative                 Mean sigma2     = 52.302
```

| rating | Mean | Std. dev. | Group | PIP |
|------------|-----------|-----------|-------|---------|
| complaints | .7052859 | .1224289 | 1 | .99973 |
| learning | .0603014 | .1285281 | 3 | .25249 |
| advance | -.0167921 | .073883 | 6 | .13148 |
| privileges | -.0074174 | .0488635 | 2 | .10998 |
| raises | .0070789 | .0670475 | 4 | .10642 |
| critical | .0009713 | .0437848 | 5 | .098534 |
| Always | | | | |
| _cons | 14.8472 | 7.874219 | 0 | 1 |

Note: Coefficient posterior means and std. dev. estimated from 64 models.

Note: Default prior is used for models.

file `bmadata_ric.dta` saved.

```
. estimates store ric
```

We stored BMA estimation results for later comparison.

Let's specify the unit-information g -prior, `gprior(uip)`:

```
. bmaregress rating complaints-advance, gprior(uip) saving(bmadata_uip)
Enumerating models ...
Computing model probabilities ...
Bayesian model averaging          No. of obs      =    30
Linear regression                 No. of predictors =     6
Model enumeration                  Groups         =     6
                                   Always           =     0
Priors:                            No. of models   =    64
  Models: Beta-binomial(1, 1)       For CPMP >= .9 =    11
  Cons.: Noninformative            Mean model size =  1.777
  Coef.: Zellner's g
    g: Unit-information, g = 30     Shrinkage, g/(1+g) = 0.9677
  sigma2: Noninformative           Mean sigma2      = 52.739
```

| rating | Mean | Std. dev. | Group | PIP |
|------------|-----------|-----------|-------|--------|
| complaints | .6988904 | .1242031 | 1 | .99969 |
| learning | .0658469 | .1334993 | 3 | .27425 |
| advance | -.0194169 | .0791369 | 6 | .14818 |
| privileges | -.0083983 | .0519289 | 2 | .12391 |
| raises | .0079323 | .071638 | 4 | .11984 |
| critical | .0012079 | .0467515 | 5 | .11142 |
| Always | | | | |
| _cons | 15.05253 | 7.983872 | 0 | 1 |

Note: Coefficient posterior means and std. dev. estimated from 64 models.

Note: Default prior is used for models.

file **bmadata_uip.dta** saved.

. estimates store uip

Using this prior reduces the fixed value of g from 36 to 30 and the shrinkage factor from 0.973 to 0.968. The reported posterior means are only slightly different from the `ric` results, which are the same as in [example 1](#), and the PIP order of the predictors remains the same. A theoretical benefit of the unit-information prior is its consistency, in the sense that if a true data-generating model is in the considered model space, its PMP will go to one as the sample size goes to infinity ([Fernández, Ley, and Steel 2001a](#)).

Other fixed g -priors often considered in the literature are the square-root n prior, `gprior(sqrtn)`, and the empirical Bayes (local) prior, `gprior(ebl)`.

The square-root n prior sets $g = \sqrt{n}$, which is $g = \sqrt{30} = 5.48$ in our example.

```
. bmaregress rating complaints-advance, gprior(sqrtn) saving(bmadata_sqrtn)
Enumerating models ...
Computing model probabilities ...

Bayesian model averaging          No. of obs      =    30
Linear regression                 No. of predictors =     6
Model enumeration                  Groups         =     6
                                   Always           =     0

Priors:                            No. of models   =    64
  Models: Beta-binomial(1, 1)      For CPMP >= .9 =    22
  Cons.: Noninformative           Mean model size =  2.818
  Coef.: Zellner's g
    g: g = sqrt(n) = 5.48          Shrinkage, g/(1+g) = 0.8456
  sigma2: Noninformative          Mean sigma2     = 64.848
```

| rating | Mean | Std. dev. | Group | PIP |
|------------|-----------|-----------|-------|--------|
| complaints | .585586 | .1441692 | 1 | .99743 |
| learning | .1134179 | .1641032 | 3 | .48829 |
| advance | -.0512107 | .126477 | 6 | .36728 |
| privileges | -.0201474 | .0851126 | 2 | .3289 |
| raises | .0203943 | .1270875 | 4 | .32382 |
| critical | .0053258 | .0832724 | 5 | .31268 |
| Always | | | | |
| _cons | 20.79312 | 9.495701 | 0 | 1 |

Note: Coefficient posterior means and std. dev. estimated from 64 models.
 Note: Default prior is used for models.

file **bmadata_sqrtn.dta** saved.

. estimates store sqrtn

This prior substantively reduces parameter g from 36 to 5.48 and the shrinkage factor from 0.973 to 0.846. The posterior mean error variance is noticeably higher. The posterior mean estimates of coefficients are somewhat different. The coefficient for `complaints` is slightly smaller (0.6 versus 0.7), the coefficient for `learning` is larger (0.11 versus 0.06), and the other coefficients are about 10 times larger, but they are still close to 0. The PIPs of all predictors except `complaints` are much higher too: about twice as high for `learning` and three times as high for the other predictors. These results appear to be closer to those from `regress` in [example 6](#). Under this more informative prior, the BMA model favors models with more predictors, which is indicated by the increased posterior mean model size from 1.7 to 2.8. We explore these differences further in [examples 11](#) and [12](#).

The local empirical Bayes prior uses a model-specific g estimated from the data for each model.

```
. bmaregress rating complaints-advance, gprior(ebl) saving(bmadata_ebl)
Enumerating models ...
Computing model probabilities ...
Bayesian model averaging                No. of obs      =    30
Linear regression                       No. of predictors =     6
Model enumeration                        Groups         =     6
                                           Always        =     0
Priors:
Models: Beta-binomial(1, 1)              No. of models   =    64
Cons.: Noninformative                   For CPMP >= .9 =    14
Coef.: Zellner's g                      Mean model size =  1.872
      g: Empirical Bayes (local)         Shrinkage, g/(1+g) = 0.9696
      sigma2: Noninformative             Mean sigma2     = 52.442
```

| rating | Mean | Std. dev. | Group | PIP |
|------------|-----------|-----------|-------|--------|
| complaints | .6989413 | .1302979 | 1 | .99949 |
| learning | .0694007 | .1373262 | 3 | .28635 |
| advance | -.0234091 | .0869118 | 6 | .16924 |
| privileges | -.0096619 | .0563268 | 2 | .14424 |
| raises | .0092523 | .0797441 | 4 | .14018 |
| critical | .001859 | .0519251 | 5 | .13209 |
| Always | | | | |
| _cons | 14.95335 | 8.048125 | 0 | 1 |

Note: Coefficient posterior means and std. dev. estimated from 64 models.

Note: Default prior is used for models.

file **bmadata_ebl.dta** saved.

. estimates store ebl

The results are again similar to the default ones and those from other priors, except the previous square-root n prior.

We can also specify one of the random priors, for example, a hyper-*g* prior with hyperparameter 3:

```
. bmaregress rating complaints-advance, gprior(hyperg 3) saving(bmadata_hyperg3)
Burn-in ...
Simulation ...
Computing model probabilities ...
Bayesian model averaging                No. of obs      =    30
Linear regression                       No. of predictors =     6
MC3 and adaptive MH sampling            Groups          =     6
                                          Always         =     0
                                          No. of models  =    38
                                          For CPMP >= .9 =    17
Priors:
  Models: Beta-binomial(1, 1)            Mean model size =  2.096
  Cons.: Noninformative                 Burn-in        =  2,500
  Coef.: Zellner's g                    MCMC sample size = 10,000
    g: Hyper-g(3)                       Acceptance rate =  0.5895
  sigma2: Noninformative                Mean sigma2    = 55.351
Sampling correlation = 0.9935
```

| rating | Mean | Std. dev. | Group | PIP |
|------------|-----------|-----------|-------|-------|
| complaints | .6741553 | .1420621 | 1 | .9984 |
| learning | .0765859 | .1437933 | 3 | .316 |
| advance | -.0307362 | .099772 | 6 | .2259 |
| privileges | -.012216 | .0648199 | 2 | .1925 |
| raises | .0126483 | .0932019 | 4 | .182 |
| critical | .0027903 | .0617168 | 5 | .1814 |
| Always | | | | |
| _cons | 16.36026 | 8.877669 | 0 | 1 |

Note: Coefficient posterior means and std. dev. estimated from 38 models.
 Note: Default prior is used for models.

| | Mean | Std. dev. | MCSE | Median | Equal-tailed [95% cred. interval] | |
|-----------|----------|-----------|--------|----------|--------------------------------------|----------|
| g | 843.7276 | 27512.51 | 581.21 | 23.32369 | 3.531358 | 587.8747 |
| Shrinkage | .9410376 | .0591481 | .00196 | .9588878 | .7793152 | .9983018 |

```
file bmadata_hyperg3.dta saved.
. estimates store hyperg3
```

Or the robust prior:

```
. bmaregress rating complaints-advance, gprior(robust) rseed(18)
> saving(bmadata_robust)

Burn-in ...
Simulation ...
Computing model probabilities ...

Bayesian model averaging                No. of obs      =    30
Linear regression                       No. of predictors =     6
MC3 and adaptive MH sampling            Groups         =     6
                                          Always         =     0
                                          No. of models  =    34
                                          For CPMP >= .9 =    12
Priors:
  Mean model size                       = 1.734
  Burn-in                                = 2,500
  MCMC sample size                       = 10,000
  Acceptance rate                         = 0.4232
  sigma2: Noninformative                 Mean sigma2    = 53.095

Sampling correlation = 0.9994
```

| rating | Mean | Std. dev. | Group | PIP |
|------------|-----------|-----------|-------|-------|
| complaints | .7000463 | .1273543 | 1 | .9998 |
| learning | .0594904 | .1286095 | 3 | .25 |
| advance | -.0192712 | .0797935 | 6 | .1503 |
| raises | .0079416 | .0727859 | 4 | .1201 |
| privileges | -.0072591 | .0487009 | 2 | .1069 |
| critical | .0014397 | .0466476 | 5 | .1067 |
| Always | | | | |
| _cons | 15.24911 | 7.988166 | 0 | 1 |

Note: Coefficient posterior means and std. dev. estimated from 34 models.
 Note: Default prior is used for models.

| | Mean | Std. dev. | MCSE | Median | Equal-tailed [95% cred. interval] | |
|-----------|----------|-----------|---------|----------|--------------------------------------|----------|
| g | 152.668 | 1968.132 | 43.5265 | 33.81024 | 8.205076 | 610.6026 |
| Shrinkage | .9656427 | .0276071 | .001234 | .9712728 | .8913639 | .9983649 |

file **bmadata_robust.dta** saved.

. estimates store robust

With a random g , the sampling algorithm is a modified MC3 that uses MC3 for model exploration and an adaptive MH for sampling g . Also, the parameter g and shrinkage are now stochastic, and their posterior summaries are displayed at the bottom of the estimation table.

By specifying a hyperprior for g , we let the data guide the value for g instead of using a fixed value. For instance, for the robust prior, the posterior mean estimate for g of roughly 153 is substantially larger than the values we assumed in previous examples. But it also has a high variability, which is not surprising for a sample of only 30 observations. With this prior, although g is much higher, the results are still similar, and our conclusions remain unchanged.

Overall, the results in this example appear to be fairly robust to a variety of g -priors, except the square-root n prior. See [example 12](#) for a comparison of these priors by using the log predictive-score. We explore the sensitivity of the results to different priors further in [example 11](#).

See [Fernández, Ley, and Steel \(2001a\)](#) for a comparison of various fixed g priors, [Liang et al. \(2008\)](#) for a discussion of local empirical Bayes, hyper- g , and hyper- g/n priors, and [Ley and Steel \(2012\)](#) and [Porwal and Raftery \(2022b\)](#) for a comparison of many other priors.

In this example, we generated several MCMC simulation datasets, which you might want to erase at the end of the analysis; see [example 14](#).



► Example 11: Sensitivity analysis of model priors

In [example 10](#), we considered several g -priors. In this example, we explore several model priors.

As a reference, we refit our default `bmaregress` model, but this time specifying the default Beta-binomial(1, 1) prior explicitly. We also save the BMA MCMC results in `bmadata_betabinom.dta` and store estimation results as `betabinom`.

```
. bmaregress rating complaints-advance, mprior(betabinomial)
> saving(bmadata_betabinom)
Enumerating models ...
Computing model probabilities ...
Bayesian model averaging                No. of obs      =      30
Linear regression                       No. of predictors =       6
Model enumeration                        Groups         =       6
                                           Always        =       0
Priors:                                  No. of models   =      64
  Model: Beta-binomial(1, 1)              For CPMP >= .9 =      10
  Cons.: Noninformative                  Mean model size =    1.699
  Coef.: Zellner's g
      g: Benchmark, g = 36                Shrinkage, g/(1+g) = 0.9730
  sigma2: Noninformative                  Mean sigma2     =    52.302
```

| rating | Mean | Std. dev. | Group | PIP |
|------------|-----------|-----------|-------|---------|
| complaints | .7052859 | .1224289 | 1 | .99973 |
| learning | .0603014 | .1285281 | 3 | .25249 |
| advance | -.0167921 | .073883 | 6 | .13148 |
| privileges | -.0074174 | .0488635 | 2 | .10998 |
| raises | .0070789 | .0670475 | 4 | .10642 |
| critical | .0009713 | .0437848 | 5 | .098534 |
| Always | | | | |
| _cons | 14.8472 | 7.874219 | 0 | 1 |

Note: Coefficient posterior means and std. dev. estimated from 64 models.
 Note: Default prior is used for parameter g .

```
file bmadata_betabinom.dta saved.
. estimates store betabinom
```

The above prior is the uniform (noninformative) prior for the model size. Alternatively, we can assume the uniform prior for the model space, which assumes that each model is equally likely, with a probability of 1/64 in our example. This is equivalent to assuming that each predictor has the same probability of being included in the model.

```
. bmaregress rating complaints-advance, mprior(uniform) saving(bmadata_uniform)
Enumerating models ...
Computing model probabilities ...

Bayesian model averaging          No. of obs          =    30
Linear regression                 No. of predictors   =     6
Model enumeration                  Groups              =     6
                                   Always                =     0

Priors:                            No. of models       =    64
  Models: Uniform                  For CPMP >= .9     =    13
  Cons.: Noninformative            Mean model size     =   2.043
  Coef.: Zellner's g
    g: Benchmark, g = 36           Shrinkage, g/(1+g) = 0.9730
  sigma2: Noninformative           Mean sigma2         = 51.603
```

| rating | Mean | Std. dev. | Group | PIP |
|------------|-----------|-----------|-------|--------|
| complaints | .6903531 | .1291635 | 1 | .99968 |
| learning | .0918832 | .1486692 | 3 | .38708 |
| advance | -.0243892 | .087595 | 6 | .19757 |
| privileges | -.0109805 | .0591344 | 2 | .16143 |
| raises | .0098927 | .0801092 | 4 | .15484 |
| critical | .0008905 | .0524265 | 5 | .14236 |
| Always | | | | |
| _cons | 14.40123 | 8.301086 | 0 | 1 |

Note: Coefficient posterior means and std. dev. estimated from 64 models.

Note: Default prior is used for parameter *g*.

file **bmadata_uniform.dta** saved.

. estimates store uniform

The posterior mean model size is slightly larger, 2 versus 1.7, under the uniform prior. But the results are very similar to those using the default beta-binomial prior.

When we assume a noninformative prior, we allow the data to “speak for themselves” when estimating model parameters. Sometimes, however, the data may have little to say. This is especially common with small datasets. In this case, it might be reasonable to explore more informative priors. The performance dataset is a relatively small dataset. We have already seen some dependency of this dataset on one of the *g*-priors in [example 10](#). Let’s see what happens as we introduce more information about the models.

Let's continue with the beta-binomial prior but make it informative. The beta-binomial prior assumes a binomial distribution for the inclusion of predictors in a model with the same IP and assumes a beta distribution for the IP. One way to modify this prior is to specify a desired expected mean model size instead of assuming that models of all sizes are equally likely. Given that we have two predictors that stand out, we may consider a prior that gives more weight to smaller models. On the other hand, all predictors have PIP above 10%, so it may not be unreasonable to also consider larger models. Let's use beta-binomial priors with the expected mean model size of 2 and 5. We specify the `mprior(betabinomial 2)` and `mprior(betabinomial 5)` options, respectively.

```
. bmaregress rating complaints-advance, mprior(betabinomial 2)
> saving(bmadata_betabinom2)
Enumerating models ...
Computing model probabilities ...
Bayesian model averaging                No. of obs      =    30
Linear regression                       No. of predictors =     6
Model enumeration                       Groups         =     6
                                         Always         =     0
Priors:                                  No. of models   =    64
  Models: Beta-binomial, mean = 2        For CPMP >= .9 =     7
  Cons.: Noninformative                 Mean model size =  1.522
  Coef.: Zellner's g
    g: Benchmark, g = 36                 Shrinkage, g/(1+g) = 0.9730
  sigma2: Noninformative                 Mean sigma2     = 52.639
```

| rating | Mean | Std. dev. | Group | PIP |
|------------|-----------|-----------|-------|---------|
| complaints | .7116651 | .1185252 | 1 | .99975 |
| learning | .0458966 | .1135214 | 3 | .19841 |
| advance | -.0105735 | .0597458 | 6 | .094173 |
| privileges | -.0051842 | .041615 | 2 | .080238 |
| raises | .005258 | .0565843 | 4 | .078173 |
| critical | .0004494 | .0371854 | 5 | .071644 |
| Always | | | | |
| _cons | 15.00536 | 7.675558 | 0 | 1 |

Note: Coefficient posterior means and std. dev. estimated from 64 models.

Note: Default prior is used for parameter *g*.

file **bmadata_betabinom2.dta** saved.

. estimates store betabinom2

The results are very similar to those using the default prior.

```

. bmaregress rating complaints-advance, mprior(betabinomial 5)
> saving(bmadata_betabinom5)
Enumerating models ...
Computing model probabilities ...
Bayesian model averaging                               No. of obs      =    30
Linear regression                                     No. of predictors =     6
Model enumeration                                     Groups          =     6
                                                       Always         =     0
Priors:                                               No. of models   =    64
  Models: Beta-binomial, mean = 5                     For CPMP >= .9 =    15
  Cons.: Noninformative                               Mean model size =  2.159
  Coef.: Zellner's g                                  Shrinkage, g/(1+g) = 0.9730
    g: Benchmark, g = 36                               Mean sigma2     = 51.509
  sigma2: Noninformative

```

| rating | Mean | Std. dev. | Group | PIP |
|------------|-----------|-----------|-------|--------|
| complaints | .6914498 | .1304325 | 1 | .99971 |
| learning | .0923695 | .1546786 | 3 | .35955 |
| advance | -.0362158 | .104821 | 6 | .22875 |
| privileges | -.0138814 | .0646952 | 2 | .19699 |
| raises | .0133366 | .0926326 | 4 | .19141 |
| critical | .003734 | .0601699 | 5 | .1824 |
| Always | | | | |
| _cons | 14.52747 | 8.31467 | 0 | 1 |

Note: Coefficient posterior means and std. dev. estimated from 64 models.

Note: Default prior is used for parameter g .

file **bmadata_betabinom5.dta** saved.

. estimates store betabinom5

The posterior mean model size is slightly higher, but the results are still similar to the above.

With the beta-binomial prior, the IP is allowed to be inferred from the data. It may be difficult to estimate the IP reliably with small datasets. If we want to fix this probability, we can use the binomial prior. Let's specify the binomial priors with mean model sizes of 2 and 5. With the binomial prior, we need to specify the IP. For the mean model size of 2, the corresponding IP is $2/p = 2/6 = 0.33$, and for the mean size of 5, it is $5/p = 5/6 = 0.83$.

```
. bmaregress rating complaints-advance, mprior(binomial 0.33)
> saving(bmadata_binom2)
Enumerating models ...
Computing model probabilities ...
Bayesian model averaging                No. of obs      =    30
Linear regression                       No. of predictors =     6
Model enumeration                        Groups         =     6
                                           Always        =     0
Priors:                                  No. of models   =    64
  Models: Binomial, IP = 0.33             For CPMP >= .9 =     7
  Cons.: Noninformative                   Mean model size =  1.561
  Coef.: Zellner's g                      Shrinkage, g/(1+g) = 0.9730
    g: Benchmark, g = 36                  Mean sigma2     = 52.561
  sigma2: Noninformative
```

| rating | Mean | Std. dev. | Group | PIP |
|------------|-----------|-----------|-------|---------|
| complaints | .7090898 | .119952 | 1 | .99975 |
| learning | .0499472 | .1158814 | 3 | .22295 |
| advance | -.0091067 | .0564581 | 6 | .096086 |
| privileges | -.0051623 | .0422812 | 2 | .084251 |
| raises | .0056663 | .057094 | 4 | .082806 |
| critical | .0002176 | .0379403 | 5 | .075179 |
| Always | | | | |
| _cons | 14.87536 | 7.771313 | 0 | 1 |

Note: Coefficient posterior means and std. dev. estimated from 64 models.

Note: Default prior is used for parameter *g*.

file **bmadata_binom2.dta** saved.

. estimates store binom2

The results for the binomial prior with the mean model size of 2 are again similar to the previous results.

```

. bmaregress rating complaints-advance, mprior(binomial 0.83)
> saving(bmadata_binom5)
Enumerating models ...
Computing model probabilities ...
Bayesian model averaging                No. of obs      =    30
Linear regression                       No. of predictors =     6
Model enumeration                       Groups         =     6
                                          Always         =     0
Priors:                                  No. of models   =    64
  Models: Binomial, IP = 0.83            For CPMP >= .9 =    23
  Cons.: Noninformative                 Mean model size =   3.836
  Coef.: Zellner's g                    Shrinkage, g/(1+g) = 0.9730
    g: Benchmark, g = 36                 Mean sigma2      = 48.343
  sigma2: Noninformative

```

| rating | Mean | Std. dev. | Group | PIP |
|------------|-----------|-----------|-------|--------|
| complaints | .6368386 | .1435817 | 1 | .99951 |
| learning | .2237682 | .1794828 | 3 | .80435 |
| advance | -.1102228 | .1561712 | 6 | .61442 |
| privileges | -.0376032 | .0996713 | 2 | .49344 |
| raises | .0313871 | .1470874 | 4 | .47092 |
| critical | .0112057 | .0948876 | 5 | .45346 |
| Always | | | | |
| _cons | 13.47056 | 9.637186 | 0 | 1 |

Note: Coefficient posterior means and std. dev. estimated from 64 models.

Note: Default prior is used for parameter g .

file **bmadata_binom5.dta** saved.

. estimates store binom5

The results for the binomial prior with the mean model size of 5 are different and more similar to the results from `regress` in [example 6](#). This is not surprising considering that this prior favors larger models—the posterior mean model size is now roughly 4.

It appears that the results are somewhat robust to the considered model priors except for `prior(binomial 0.83)`. We evaluate these priors more formally in [example 12](#).

◀

► Example 12: Comparing model fit using the log predictive-score

As we discussed in *Model diagnostics* and *Regression modeling and model space* in *Introduction to BMA for linear regression*, the definition of the model space and model diagnostics are important after BMA linear regression. Before you proceed with `bmaregress`, it is beneficial that you explore the regression diagnostics for at least the full model first. In addition to checking standard regression assumptions, you will benefit from exploring alternative regression specifications to ensure that you include all relevant predictors in the BMA model space; see [\[R\] regress postestimation](#). After fitting `bmaregress`, you should check regression diagnostics for models with higher PMPs, such as the two models we identified in [example 2](#). You should also check the sensitivity of the results to the default priors, as we showed in [examples 10](#) and [11](#) and continue exploring in this example. And, if sampling is used, we should also check BMA convergence; see [example 9](#).

In [example 10](#), the choice of prior does not appear to affect the results except for one prior. Let's go ahead and compare those different prior specifications more formally by using the log predictive-score (LPS). The LPS is defined as the negative of the log of the posterior predictive density evaluated

at an observation. The smaller its value, the better the model fit. The `bmastats lps` command computes LPS. We can use this command for in-sample observations used during estimation and for out-of-sample observations. The former can be used for comparing model goodness of fit, and the latter can be used for checking predictive performance of the model. We will compare the goodness of fit here.

```
. bmastats lps ric uip sqrtn ebl hyperg3 robust, compact
Log predictive-score (LPS)
Number of observations = 30
```

| LPS | Mean | Minimum | Maximum |
|---------|----------|----------|----------|
| ric | 3.33244 | 2.890314 | 4.429047 |
| uip | 3.3322 | 2.89472 | 4.422744 |
| sqrtn | 3.36909 | 2.999145 | 4.388221 |
| ebl | 3.331938 | 2.892466 | 4.418862 |
| hyperg3 | 3.339529 | 2.916094 | 4.413267 |
| robust | 3.335522 | 2.897331 | 4.432305 |

Notes: Results using analytical and frequency PMPs.
Result **ebl** has the smallest mean LPS.

`bmastats lps` reports that the `ebl` prior has the lowest mean LPS, but all mean LPS values (and other summaries), except `sqrtn`, are similar.

Similarly to *g*-priors, we can evaluate the model priors from [example 10](#) by using the LPS.

```
. bmastats lps uniform betabinom betabinom2 betabinom5 binom2 binom5, compact
Log predictive-score (LPS)
Number of observations = 30
```

| LPS | Mean | Minimum | Maximum |
|------------|----------|----------|----------|
| uniform | 3.324591 | 2.884711 | 4.394576 |
| betabinom | 3.33244 | 2.890314 | 4.429047 |
| betabinom2 | 3.336546 | 2.892654 | 4.445658 |
| betabinom5 | 3.323516 | 2.885564 | 4.386189 |
| binom2 | 3.335636 | 2.891732 | 4.438463 |
| binom5 | 3.295903 | 2.865979 | 4.258077 |

Notes: Using analytical PMPs.
Result **binom5** has the smallest mean LPS.

The `binom5` prior, `mprior(binomial 0.83)`, with the mean model size of 5, has the smallest mean LPS. It also has the smaller mean LPS than the above `ebl` prior.

In conclusion, all considered priors identified `complaints` as a highly important predictor of `rating` and `learning` as the predictor with the next highest PIP. The actual estimates of PIPs, except for `complaints`, and posterior summaries appeared to be dependent on whether the BMA model favored the smaller or larger models. This may be explained by the presence of correlation between some of the predictors. The noninformative model priors such as `betabinomial` (the default) and `uniform` and *g*-priors assuming shrinkage $\delta = g/(g + 1)$ closer to 1 favored smaller models for these data. The `sqrtn` *g*-prior and `binomial 0.83` model prior (with the mean model size of five) favored the larger models.

In the above, we considered the *g*-priors and model priors independently. But it is important to consider their combination when evaluating model performance. To explore model fit, we computed LPS using the entire estimation sample. We could have instead split our data into a training and test subsamples and evaluated the out-of-sample performance of the priors by fitting the models using the

training subsample and computing LPS using the test subsample; see the examples in [BMA] **bmastats** **lps**, including how to use cross-validation to check the model performance. Such an approach is important for evaluating the predictive performance of the model, especially when prediction is the final goal of the analysis. But, because of the smaller sample size, this approach may not be as viable for the performance dataset.

LPS is used to evaluate the predictive performance of models in the context of BMA (Fernández, Ley, and Steel (2001b); Ley and Steel (2012)), but we can also use other diagnostic measures such as mean squared error or CrI coverage to compare model fit and its predictive performance; see [example 16](#) and *Remarks and examples* in [BMA] **bmapredict**.

In this example, we generated several datasets with BMA results, which we can remove at the end of the analysis; see [example 14](#).

◀

▷ Example 13: BMA predictions

In addition to identifying high PMP models and important predictors, BMA is also used for prediction that accounts for model uncertainty. In fact, BMA was originated in the context of prediction. In prediction, it is particularly important that the considered model space is as rich as possible to obtain accurate predictions.

You can use the **bmapredict** command to compute posterior predictive summaries such as mean, standard deviations, and CrIs, or you can simulate an entire predictive sample; see [BMA] **bmapredict**.

For posterior means and standard deviations, analytical expressions are available with fixed g , so you can use **bmapredict** directly after **bmaregress** to compute those summaries.

Recall our BMA model from [example 1](#). Let's compute posterior predictive means for **rating** based on this model.

```
. estimates restore bmareg
(results bmareg are active now)
. bmapredict pmean, mean
note: computing analytical posterior predictive means.
```

Let's now compute the 95% equal-tailed predictive CrIs. The analytical expressions for these are not as straightforward and require approximation. But we can compute them based on a predictive MCMC sample. To generate this sample, we must first obtain the MCMC sample of model parameters. This is done by **bmacoefsample**. To use **bmapredict**, we must also save the MCMC model parameter sample with **bmacoefsample**.

```
. bmacoefsample, saving(bmcoef) rseed(18)
Simulation (10000): ...5000...10000 done
file bmcoef.dta saved.
. bmapredict cri_l cri_u, cri
note: computing credible intervals using simulation.
Computing predictions ...
```

Let's summarize the predictions:

```
. summarize rating pmean cri_l cri_u
```

| Variable | Obs | Mean | Std. dev. | Min | Max |
|----------|-----|----------|-----------|----------|----------|
| rating | 30 | 64.63333 | 12.17256 | 40 | 85 |
| pmean | 30 | 64.63333 | 9.788015 | 43.71523 | 82.16643 |
| cri_l | 30 | 49.68274 | 9.812 | 27.45753 | 66.24698 |
| cri_u | 30 | 79.67859 | 9.794941 | 59.52461 | 98.29689 |

The predicted summaries look reasonable for `rating`. The mean of posterior predictive means over observations is 64.63 and matches the mean of `rating`. The mean posterior predictive lower 95% credible bound is 49.7 and the upper is 79.7. Also see *Remarks and examples* in [BMA] `bmapredict` for how to evaluate the quality of predictions.

◀

▶ Example 14: Cleanup after BMA analysis

With BMA, we often need to generate and save many datasets that contain simulation summaries. Remember to remove them whenever you no longer need them. We remove the following BMA datasets generated by *Getting started examples*:

```
. erase bmadata_enum.dta
. erase bmadata_ric.dta
. erase bmadata_uip.dta
. erase bmadata_sqrtn.dta
. erase bmadata_ebl.dta
. erase bmadata_hyperg3.dta
. erase bmadata_robust.dta
. erase bmadata_betabinom.dta
. erase bmadata_betabinom2.dta
. erase bmadata_betabinom5.dta
. erase bmadata_binom2.dta
. erase bmadata_binom5.dta
. erase bmadata_uniform.dta
. erase bmacoef.dta
```

◀

BMA predictive performance for the USA crime rate data

Consider a study from 1960 on the factors influencing criminal activity in the USA (Ehrlich 1973; Becker 1968; and Brier and Fienberg 1980). The earlier work by Ehrlich (1973) focused on the relationship between crime rate and the probability of imprisonment and average time served in state prisons. The dataset `uscrime` is from Vandaele (1978). It contains 16 variables and 47 observations, one for 47 different states in the USA. The outcome of interest, `ln_offenses`, accounts for the rate of criminal activity per head of population on the log scale. The rest of the variables measure different socio-economic and punishment-related factors, also on the log scale. Variables `ln_prisonp` and `ln_prisont` correspond to the predictors of interest in the analysis by Ehrlich (1973) in the log scale. (In what follows, when we mention predictors, we will imply their log-transformed versions without stating this explicitly.)

```

. use https://www.stata-press.com/data/r18/uscrime
(1960 crime rates for 47 states in the USA)
. describe
Contains data from https://www.stata-press.com/data/r18/uscrime.dta
Observations:      47                1960 crime rates for 47 states
                               in the USA
Variables:         16                23 Feb 2023 13:08
                               (_dta has notes)

```

| Variable name | Storage type | Display format | Value label | Variable label |
|---------------|--------------|----------------|-------------|--|
| ln_offenses | float | %9.0g | | Number of offenses per million population, log scale |
| ln_malepop | float | %9.0g | | Number of males of age 14-24 per 1,000 population, log scale |
| southern | byte | %8.0g | | Indicator variable for southern state |
| ln_meaneduc | float | %9.0g | | Mean years of schooling, log scale |
| ln_police60 | float | %9.0g | | Police expenditure in 1960, log scale |
| ln_police59 | float | %9.0g | | Police expenditure in 1959, log scale |
| ln_labor | float | %9.0g | | Labor force participation rate, log scale |
| ln_mtofpop | float | %9.0g | | Number of males per 1,000 females, log scale |
| ln_pop | float | %9.0g | | State population size in hundred thousands, log scale |
| ln_nonwhite | float | %9.0g | | Number of nonwhites per 1,000 people, log scale |
| ln_unemp24 | float | %9.0g | | Unemployment rate of urban males, age 14-24, log scale |
| ln_unemp39 | float | %9.0g | | Unemployment rate of urban males, age 35-39, log scale |
| ln_wealth | float | %9.0g | | Wealth in tens of dollars, log scale |
| ln_ineq | float | %9.0g | | Income inequality, log scale |
| ln_prisonp | float | %9.0g | | Probability of imprisonment, log scale |
| ln_prisont | float | %9.0g | | Average time served in state prisons, log scale |

Sorted by:

Raftery, Madigan, and Hoeting (1997) provide an extensive analysis of this dataset in the context of BMA. We will follow some of their analyses by using `bmaregress`.

▷ Example 15: BMA regression for the USA crime rate

We first use `bmaregress` to fit a BMA linear regression of `ln_offenses` on the remaining 15 variables. With more than 12 predictors, `bmaregress` uses stochastic MC3 sampling, so we specify the `rseed()` option for reproducibility. Alternatively, we could still use enumeration to visit all $2^{15} = 32,768$ models by specifying the `enumeration` option, but we stick with the MC3 sampling to mimic the setup of [Raftery, Madigan, and Hoeting \(1997\)](#) more closely. We also specify the uniform prior on the model space to be more consistent with the authors' setup, because, by default, `bmaregress` assumes a uniform prior on the model size.

```
. bmaregress ln_offenses ln_malepop-ln_prisont, mprior(uniform) rseed(18)

Burn-in ...
Simulation ...
Computing model probabilities ...

Bayesian model averaging                No. of obs      =    47
Linear regression                       No. of predictors =    15
MC3 sampling                            Groups         =    15
                                         Always        =     0
                                         No. of models  =   803
                                         For CPMP >= .9 =   245
                                         Mean model size =  6.428
Prior:                                   Burn-in       =  2,500
  Models: Uniform                       MCMC sample size = 10,000
  Cons.: Noninformative                 Acceptance rate =  0.2902
  Coef.: Zellner's g                    Shrinkage, g/(1+g) = 0.9956
    g: Benchmark, g = 225                Mean sigma2    =  0.037
    sigma2: Noninformative
Sampling correlation = 0.9380
```

| ln_offenses | Mean | Std. dev. | Group | PIP |
|--------------|-----------|-----------|-------|---------|
| ln_ineq | 1.460748 | .3458405 | 13 | .99948 |
| ln_meandeduc | 1.855513 | .6249968 | 3 | .9692 |
| ln_prisonp | -.1834373 | .1198622 | 14 | .81149 |
| ln_malepop | 1.091052 | .732965 | 1 | .77907 |
| ln_police60 | .6916081 | .5425088 | 4 | .66525 |
| ln_nonwhite | .0517939 | .0582191 | 9 | .51981 |
| ln_unemp39 | .1545517 | .198343 | 11 | .4623 |
| ln_police59 | .3509272 | .5211463 | 5 | .36779 |
| ln_pop | -.0142643 | .0336552 | 8 | .20569 |
| ln_prisont | -.0427634 | .1211644 | 15 | .17169 |
| ln_wealth | .0973078 | .2782722 | 12 | .15905 |
| southern | .0192679 | .0682639 | 2 | .11977 |
| ln_unemp24 | -.0033401 | .1010699 | 10 | .088322 |
| ln_mtofpop | .0522426 | .4667382 | 7 | .063663 |
| ln_labor | .008854 | .140245 | 6 | .045103 |
| Always | | | | |
| _cons | -21.67062 | 6.336048 | 0 | 1 |

Note: Coefficient posterior means and std. dev. estimated from 803 models.
 Note: Default prior is used for parameter `g`.

From the output, the uniform prior is used for the model space, and the benchmark prior of [Fernández, Ley, and Steel \(2001a\)](#) with $g = 15^2 = 225$ for these data is used for the regression coefficients. The shrinkage factor of $225/(225 + 1) = 0.9956$ corresponds to little shrinkage of coefficients toward zero. The MC3 sampling has an acceptance rate of about 30% and fairly high sampling correlation of about 94%. We do not suspect nonconvergence, but it is a good practice to look at the graphical convergence summary as well. We will leave you to verify this by running `bmagraph pmp`. This

means that the visited 803 models are among models with high posterior probabilities, and the drawn MCMC sample provides a good representation of the model posterior distribution.

The top three predictors with PIP above 80% are income inequality, `ln_ineq`, mean years of schooling, `ln_meandeduc`, and probability of imprisonment, `ln_prisonp`. Other important predictors for crime rate are percentage of males, `ln_malepop`, and police expenditure in 1960, `ln_police60`. These factors were also selected in [Raftery, Madigan, and Hoeting \(1997\)](#) by using various model-selection criteria.

We use the `bmastats models` command to inspect the top 5 models by PMP.

```
. bmastats models
Computing model probabilities ...
Model summary                                Number of models:
                                             Visited = 803
                                             Reported = 5
```

| | Analytical PMP | Frequency PMP | Model size |
|------|----------------|---------------|------------|
| Rank | | | |
| 1 | .0412 | .0339 | 6 |
| 2 | .03963 | .0454 | 7 |
| 3 | .0266 | .0293 | 6 |
| 4 | .02633 | .0126 | 5 |
| 5 | .02605 | .0142 | 5 |

Note: Using analytical PMP for model ranking.

Variable-inclusion summary

| | Rank 1 | Rank 2 | Rank 3 | Rank 4 | Rank 5 |
|---------------------------|-----------|-----------|-----------|-----------|-----------|
| <code>ln_malepop</code> | x | x | x | x | x |
| <code>ln_meandeduc</code> | x | x | x | x | x |
| <code>ln_police60</code> | x | x | | x | x |
| <code>ln_unemp39</code> | x | x | x | x | |
| <code>ln_ineq</code> | x | x | x | x | x |
| <code>ln_prisonp</code> | x | x | x | | x |
| <code>ln_nonwhite</code> | | x | | | |
| <code>ln_police59</code> | | | x | | |

Legend:

x - estimated

The top model has PMP of 0.04 and includes six predictors: `ln_malepop`, `ln_meandeduc`, `ln_police60`, `ln_unemp39`, `ln_ineq`, and `ln_prisonp`. The posterior mean estimate for probability of imprisonment from the earlier estimation table is negative, -0.18 , which indicates its deterrent “effect” on the outcome. (As mentioned in [Raftery, Madigan, and Hoeting \[1997\]](#), the term “effect” in this analysis is used loosely.) In addition to `ln_prisonp`, the model considered in [Ehrlich \(1973\)](#), includes time served in prison, `ln_prisonst`, as a deterrent to criminal activity. In view of our BMA analysis, this predictor has a PIP of only 0.17 and is not included in the top five models. In the context of model selection, when we work with a single model, there is uncertainty about the inclusion of this predictor ([Raftery, Madigan, and Hoeting 1997](#)).

▷ Example 16: Assessing BMA predictive performance

To assess the predictive performance of our BMA regression, we randomly split the dataset into two equal subsets, fit the model to one of them and test the predictive performance on the other. We adopt the prediction analysis of [Raftery, Madigan, and Hoeting \(1997\)](#) for comparison. We will obtain the 90% predictive CrIs for the test subsample and compute the percentage of the observed values that fall within these intervals.

We use the `splitsample` command to create the `sample` variable, which identifies the training and test subsamples.

```
. splitsample, generate(sample) nsplit(2) rseed(18)
```

We then refit our model using the first subsample. We also save the MCMC model simulation results in a dataset, `bma1model.dta`, to use `bmacoefsample` later.

```
. bmaregress ln_offenses ln_malepop-ln_prisont if sample == 1,
> mprior(uniform) rseed(18) saving(bma1model)

Burn-in ...
Simulation ...
Computing model probabilities ...

Bayesian model averaging                No. of obs      =    24
Linear regression                       No. of predictors =    15
MC3 sampling                            Groups         =    15
                                          Always         =     0
                                          No. of models  =   845
                                          For CPMP >= .9 =   246
Priors:
Models: Uniform                         Mean model size =  4.254
  Cons.: Noninformative                  Burn-in        =  2,500
  Coef.: Zellner's g                     MCMC sample size = 10,000
      g: Benchmark, g = 225              Acceptance rate =  0.2532
  sigma2: Noninformative                 Shrinkage, g/(1+g) = 0.9956
                                          Mean sigma2    =  0.043

Sampling correlation = 0.9556
```

| ln_offenses | Mean | Std. dev. | Group | PIP |
|--------------|-----------|-----------|-------|---------|
| ln_ineq | 1.742633 | .571148 | 13 | .96936 |
| ln_police60 | 1.066626 | .7762218 | 4 | .7983 |
| ln_meandeduc | .9848326 | 1.016487 | 3 | .56043 |
| ln_prisonp | -.0533234 | .1007384 | 14 | .2904 |
| ln_labor | .531245 | 1.073081 | 6 | .26204 |
| ln_police59 | .1248871 | .7554263 | 5 | .2585 |
| ln_pop | -.029143 | .0621607 | 8 | .23924 |
| ln_unemp39 | .1347758 | .3466462 | 11 | .19688 |
| ln_wealth | .1413427 | .471408 | 12 | .13636 |
| ln_unemp24 | -.0771369 | .2646401 | 10 | .12362 |
| ln_prisont | .0209606 | .1144098 | 15 | .10844 |
| southern | .0139217 | .0754495 | 2 | .092931 |
| ln_malepop | .0731975 | .3506361 | 1 | .083313 |
| ln_nonwhite | .0034271 | .0257528 | 9 | .068867 |
| ln_mtofpop | .0052071 | .6672984 | 7 | .065453 |
| Always | | | | |
| _cons | -17.13352 | 8.459582 | 0 | 1 |

Note: Coefficient posterior means and std. dev. estimated from 845 models.

Note: Default prior is used for parameter *g*.

file `bma1model.dta` saved.

The MCMC model simulation file saved by `bmaregress` contains the information about the visited models and model-specific posterior means and standard deviations of regression coefficients. But to compute CrIs, we also need an MCMC sample from posterior distributions of the model parameters. The `bmacoefsample` command generates such a sample. We also save the MCMC results from `bmacoefsample` in `bma1coef.dta`, as required by `bmapredict`, which we will use later to generate CrIs.

```
. bmacoefsample, saving(bma1coef) rseed(18)
Simulation (10000): ...5000...10000 done
file bma1coef.dta saved.
```

The MCMC dataset `bma1coef` contains the draws from the posterior distribution of model parameters, which will be used to generate CrIs.

We now use `bmapredict` to compute the 90% lower and upper CrIs using the test sample and save them in new variables `bma1l` and `bma1u`.

```
. bmapredict bma1l bma1u if sample == 2, cri clevel(90) rseed(18)
note: computing credible intervals using simulation.
Computing predictions ...
```

Now we compute the actual CrI coverage.

```
. generate bma1cov90 = ln_offenses < bma1u & ln_offenses > bma1l if sample == 2
(24 missing values generated)
. summarize bma1cov90
```

| Variable | Obs | Mean | Std. dev. | Min | Max |
|-----------|-----|----------|-----------|-----|-----|
| bma1cov90 | 23 | .8695652 | .3443502 | 0 | 1 |

We obtain about 87% coverage for the observed outcome in the test sample, which is close to the theoretical 90%. In [Raftery, Madigan, and Hoeting \(1997\)](#), the authors report a predictive coverage of 80% for Occam's window algorithm and a 67% coverage or below for various other model selection procedures.

For comparison, let's also compute predictive CrI coverages based on two regression models: one that includes all predictors, the full model, and one that corresponds to the highest posterior model (HPM), rank 1, model from [example 15](#).

We can still use `bmaregress` to fit these models, but we now need to specify the relevant predictors to be always included in the model.

```
. bmaregress ln_offenses (ln_malepop-ln_prisont, always) if sample == 1,
> mprior(uniform) saving(bma2model) notable
Enumerating models ...
Computing model probabilities ...

Bayesian model averaging      No. of obs      =    24
Linear regression            No. of predictors =    15
Model enumeration              Groups          =     0
                                Always           =    15
Priors:                        No. of models   =     1
  Models: Uniform              For CPMP >= .9 =     1
  Cons.: Noninformative       Mean model size = 15.000
  Coef.: Zellner's g
    g: Benchmark, g = 225      Shrinkage, g/(1+g) = 0.9956
  sigma2: Noninformative      Mean sigma2     =  0.010
file bma2model.dta saved.
```

As expected, there is only one visited model in the model space.

We now repeat the earlier computations of CrIs and their coverage for the full model.

```
. bmacroefsample, saving(bma2coef) rseed(18)
Simulation (10000): ...5000...10000 done
file bma2coef.dta saved.
. bmapredict bma2l bma2u if sample==2, cri clevel(90) rseed(18)
note: computing credible intervals using simulation.
Computing predictions ...
. generate bma2cov90 = ln_offenses < bma2u & ln_offenses > bma2l if sample == 2
(24 missing values generated)
. summarize bma2cov90
```

| Variable | Obs | Mean | Std. dev. | Min | Max |
|-----------|-----|----------|-----------|-----|-----|
| bma2cov90 | 23 | .3913043 | .4990109 | 0 | 1 |

The full model achieves only 39% coverage, which is substantially lower than the BMA coverage.

Next we compute predictions using the HPM model reported by the `bmaregress` command in [example 15](#). It includes the following six predictors: `ln_malepop`, `ln_meaneeduc`, `ln_police60`, `ln_unemp39`, `ln_ineq`, and `ln_prisonp`. We specify these variables in the `always` group and then compute the predictive CrI coverage as before.

```
. bmaregress ln_offenses
> (ln_malepop ln_meaneeduc ln_police60 ln_unemp39 ln_ineq ln_prisonp, always)
> if sample == 1, mprior(uniform) saving(bma3model) notable
Enumerating models ...
Computing model probabilities ...
Bayesian model averaging                               No. of obs      =    24
Linear regression                                     No. of predictors =     6
Model enumeration                                     Groups         =     0
                                                         Always         =     6
Priors:                                                No. of models   =     1
  Models: Uniform                                     For CPMP >= .9 =     1
  Cons.: Noninformative                               Mean model size = 6.000
  Coef.: Zellner's g
    g: Benchmark, g = 36                               Shrinkage, g/(1+g) = 0.9730
  sigma2: Noninformative                               Mean sigma2     = 0.036
file bma3model.dta saved.
. bmacroefsample, saving(bma3coef) rseed(18)
Simulation (10000): ...5000...10000 done
file bma3coef.dta saved.
. bmapredict bma3l bma3u if sample==2, cri clevel(90) rseed(18)
note: computing credible intervals using simulation.
Computing predictions ...
. generate bma3cov90 = ln_offenses < bma3u & ln_offenses > bma3l if sample == 2
(24 missing values generated)
. summarize bma3cov90
```

| Variable | Obs | Mean | Std. dev. | Min | Max |
|-----------|-----|---------|-----------|-----|-----|
| bma3cov90 | 23 | .826087 | .3875534 | 0 | 1 |

This model produces the predictive CrI coverage of about 83%, but it is still lower than the BMA model with coverage of 87%.

Once we are done with our analysis, we can remove the extra variables and datasets that we created:

```
. drop bma*l bma*u bma*cov90
. erase bma1model.dta
. erase bma2model.dta
. erase bma3model.dta
. erase bma1coef.dta
. erase bma2coef.dta
. erase bma3coef.dta
```

◀

BMA analysis of cross-country economic growth data

In the following series of examples, we apply BMA to an extensively studied problem of economic growth. We follow some of the methodology and use the dataset from [Fernández, Ley, and Steel \(2001b\)](#), which is considered one of the fundamental papers on BMA. Also see, for instance, [Eicher, Papageorgiou, and Raftery \(2011\)](#), who investigated the effect of different BMA priors in a study of economic growth determinants and found that a uniform model prior and a unit-information g -prior performed best among considered priors. And see [Ley and Steel \(2009\)](#) for the effect of prior assumptions in economic growth modeling.

The `econgrowth` dataset contains information about 72 countries, including their average per capita gross domestic product (GDP) computed over the period 1960 through 1992, size of labor force, life expectancy, etc. It is a subset from an earlier study in [Sala-I-Martin \(1997\)](#). Below, we describe the variables in the dataset.

```
. use https://www.stata-press.com/data/r18/econgrowth
(Economic growth data)
. describe
```

```
Contains data from https://www.stata-press.com/data/r18/econgrowth.dta
Observations:      72      Economic growth data
Variables:         43      8 Mar 2023 10:17
                    (_dta has notes)
```

| Variable name | Storage type | Display format | Value label | Variable label |
|---------------|--------------|----------------|-------------|--|
| gdpgrowth | float | %9.0g | | * Average annual growth in GDP per capita, 1960-1992 |
| abslat | float | %9.0g | | Absolute latitude (degrees) |
| age | byte | %8.0g | | Age |
| area | int | %8.0g | | Surface area (in 1,000s of square kilometers) |
| blmktpm | float | %9.0g | | Premium for black market |
| brit | byte | %8.0g | | British colony dummy |
| buddha | float | %9.0g | | Fraction Buddhist |
| catholic | float | %9.0g | | Fraction Catholic |
| civllib | float | %9.0g | | * Civil liberties index |
| confucian | float | %9.0g | | Fraction Confucian |
| ecoorg | byte | %8.0g | | * Degree of capitalism |
| english | float | %9.0g | | Fraction speaking English |
| equipinv | float | %9.0g | | Share of output invested in physical equipment |
| ethnol | float | %9.0g | | Ethnolinguistic fractionalization |
| foreign | float | %9.0g | | Fraction speaking language other than English |
| french | byte | %8.0g | | French colony dummy |
| gdp60 | float | %9.0g | | Log of GDP per capita in 1960 |
| highenroll | float | %9.0g | | Higher education enrollment |
| hindu | float | %9.0g | | Fraction Hindu |
| jewish | float | %9.0g | | Fraction Jewish |
| labforce | float | %9.0g | | Labor force (in 1,000s) |
| latamerica | byte | %8.0g | | Latin America dummy |
| lifeexp | float | %9.0g | | Life expectancy |
| mining | float | %9.0g | | Fraction of GDP in mining |
| muslim | float | %9.0g | | Fraction Muslim |
| nequipinv | float | %9.0g | | Share of output invested in items other than equipment |
| outwaror | byte | %8.0g | | Outward orientation |
| polrights | float | %9.0g | | * Political rights index |
| popg | float | %9.0g | | Annual percent change in the population |
| prexports | float | %9.0g | | Proportion of exports that are primary, 1970 |
| protestants | float | %9.0g | | Fraction Protestants |
| prscenroll | float | %9.0g | | Primary school enrollment (proportion) |
| publedupct | float | %9.0g | | Public education share |
| revncoup | float | %9.0g | | Revolutions and coups |
| rfexdist | int | %8.0g | | Exchange rate distortions |
| ruleoflaw | float | %9.0g | | Index developed by the World Justice Project (WJP) |
| spanish | byte | %8.0g | | Spanish colony dummy |
| stdbmp | float | %9.0g | | Std. dev. of black market premium |
| subsahara | byte | %8.0g | | Sub-Saharan dummy |
| wardummy | byte | %8.0g | | War dummy |
| workpop | float | %9.0g | | Log of employment-population ratio |
| yrsopen | float | %9.0g | | Fraction of years an economy has been open between 1950 and 1990 |
| y | float | %9.0g | | * Average annual growth in GDP per capita, 1960-1992 |

* indicated variables have notes

Sorted by:

We are interested in identifying the factors explaining the growth rate by considering a regression model of GDP growth over a host of country characteristics. BMA will be used to account for model uncertainty.

► Example 17: BMA linear regression of economic growth

We fit the same BMA regression model as described in [Fernández, Ley, and Steel \(2001b\)](#). It uses a uniform prior on the model space, where each model has the same prior probability and a Zellner's g -prior for the regression coefficients with $g = \max(n, p^2) = 1,681$, where $n = 72$ is the sample size and $p = 41$ is the number of predictors. This benchmark prior, `gprior(benchmark)`, is the default in `bmaregress`.

With so many possible predictors, the model space is too big to explore by model enumeration, so the MC3 sampling will be used. We increase the MCMC sample size to 200,000 and set a random-number seed for reproducibility. With that many iterations, the command will take a few moments to run, so we display a dot every 5,000 iterations to monitor the progress.

```
. bmaregress gdpgrowth abslat-yrsopen, mprior(uniform) mcmcsample(200000)
> rseed(18) dots(5000)
Burn-in (2500): done
Simulation (200000): ..... done
Computing model probabilities ...
Bayesian model averaging          No. of obs          =          72
Linear regression                 No. of predictors   =          41
MC3 sampling                       Groups              =          41
                                   Always                =           0
                                   No. of models        =       22,019
                                   For CPMP >= .9      =        3,911
Mean model size                    =          9.593
Burn-in                            =         2,500
MCMC sample size                   =       200,000
Acceptance rate                    =         0.1724
Shrinkage, g/(1+g)                 =         0.9994
Mean sigma2                        =         .000055

Priors:
Models: Uniform
Cons.: Noninformative
Coef.: Zellner's g
      g: Benchmark, g = 1,681
sigma2: Noninformative
Sampling correlation = 0.9427
```


| gdpgrowth | Mean | Std. dev. | Group | PIP |
|-------------|-----------|-----------|-------|---------|
| gdp60 | -.0161835 | .0029825 | 16 | .99977 |
| confucian | .0563652 | .0128534 | 9 | .99861 |
| lifeexp | .0008438 | .0003119 | 22 | .95731 |
| equipinv | .1648326 | .0619083 | 12 | .95457 |
| subsahara | -.0118906 | .0079718 | 38 | .77207 |
| muslim | .0087556 | .007237 | 24 | .67147 |
| ruleoflaw | .0082255 | .0084833 | 35 | .53652 |
| yrsoopen | .0071409 | .008048 | 41 | .48922 |
| ecoorg | .0013196 | .0014889 | 10 | .48642 |
| protestants | -.0058382 | .0070492 | 30 | .46548 |
| nequipinv | .0252486 | .0319193 | 25 | .4349 |
| mining | .0169622 | .0224533 | 23 | .41827 |
| latamerica | -.0014542 | .0036659 | 21 | .16994 |
| prscenroll | .0035024 | .0087742 | 31 | .16556 |
| buddha | .0018523 | .0050603 | 6 | .14496 |
| blmktpm | -.0010587 | .0029964 | 4 | .13458 |
| catholic | -.0003605 | .0027147 | 7 | .098655 |
| hindu | -.0018908 | .007526 | 18 | .079742 |
| civllib | -.0001846 | .0007183 | 8 | .078893 |
| prexports | -.0005476 | .002645 | 29 | .054696 |
| polrights | -.0000816 | .0004163 | 27 | .050608 |
| rfexdist | -2.71e-06 | .0000142 | 34 | .046846 |
| age | -1.79e-06 | .0000106 | 2 | .038836 |
| wardummy | -.000138 | .0008583 | 39 | .035901 |
| foreign | .0001651 | .0010763 | 14 | .035183 |
| english | -.0002166 | .0013975 | 11 | .034352 |
| labforce | 1.95e-09 | 1.77e-08 | 20 | .029665 |
| ethnol | .0001246 | .0010726 | 13 | .023176 |
| french | .000088 | .0007816 | 15 | .021807 |
| spanish | .000089 | .0009374 | 36 | .021585 |
| stdbmp | -3.24e-07 | 2.83e-06 | 37 | .021269 |
| abslat | 1.84e-07 | .000019 | 1 | .016268 |
| workpop | -.0001042 | .0013305 | 40 | .015206 |
| outwaror | -.0000245 | .00035 | 26 | .014345 |
| popg | .0021388 | .0272493 | 28 | .01341 |
| highenroll | -.0003523 | .0045785 | 17 | .01317 |
| brit | -.000021 | .0003203 | 5 | .010822 |
| jewish | -.000091 | .0016002 | 19 | .010737 |
| publedupct | .000255 | .0143465 | 32 | .010524 |
| Always | | | | |
| _cons | .0705111 | .0208966 | 0 | 1 |

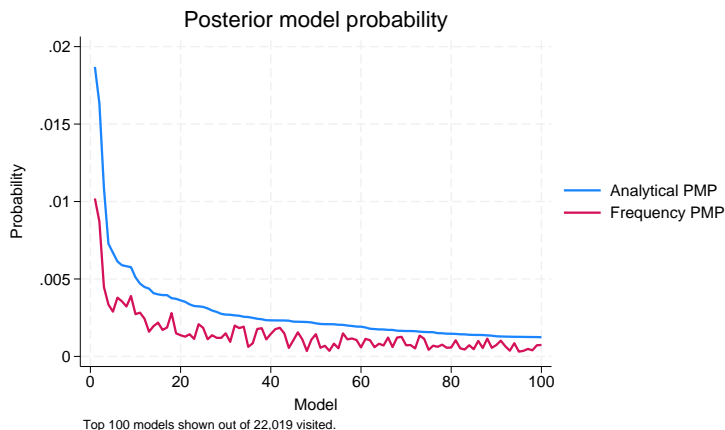
Note: Coefficient posterior means and std. dev. estimated from 22,019 models.

Note: Default prior is used for parameter g.

Note: 2 predictors with PIP less than .01 not shown.

The number of models visited by MC3 is 22,019. Of those, 3,911 contribute to the CPMP of at least 0.9, so we can expect many models with low PMPs. The mean model size is 9.6, so, on average, models tend to include about 10 predictors. The overall acceptance rate is about 17%, which is a reasonable value for MC3 sampling in a high-dimensional space. The sampling correlation is about 0.94, so nonconvergence should not be suspected. Recall that this is the correlation between the analytical posterior model probabilities and their MCMC sampling frequencies. We can use the `bmagraph pmp` command to plot these frequencies for visual inspection.

```
. bmagraph pmp
```



For the first 100 models, the frequency PMPs are below the analytical PMPs because we explored only a small fraction of all possible models, and the PMP distribution has a long and heavy tail. With the increase of the MCMC sample size, the differences will diminish. We do not have a reason to suspect nonconvergence.

bmaregress reports results for 39 out of 41 predictors. Two of the predictors have PIPs less than 0.01 and thus are not reported. If we want, we can specify the allcoef option on replay to see all coefficients.

```
. bmaregress, allcoef noheader
```

| gdpgrowth | Mean | Std. dev. | Group | PIP |
|-------------|-----------|-----------|-------|----------|
| gdp60 | -.0161835 | .0029825 | 16 | .99977 |
| confucian | .0563652 | .0128534 | 9 | .99861 |
| lifeexp | .0008438 | .0003119 | 22 | .95731 |
| equipinv | .1648326 | .0619083 | 12 | .95457 |
| subsahara | -.0118906 | .0079718 | 38 | .77207 |
| muslim | .0087556 | .007237 | 24 | .67147 |
| ruleoflaw | .0082255 | .0084833 | 35 | .53652 |
| yrsoopen | .0071409 | .008048 | 41 | .48922 |
| ecoorg | .0013196 | .0014889 | 10 | .48642 |
| protestants | -.0058382 | .0070492 | 30 | .46548 |
| nequipinv | .0252486 | .0319193 | 25 | .4349 |
| mining | .0169622 | .0224533 | 23 | .41827 |
| latamerica | -.0014542 | .0036659 | 21 | .16994 |
| prscenroll | .0035024 | .0087742 | 31 | .16556 |
| buddha | .0018523 | .0050603 | 6 | .14496 |
| blmktpm | -.0010587 | .0029964 | 4 | .13458 |
| catholic | -.0003605 | .0027147 | 7 | .098655 |
| hindu | -.0018908 | .007526 | 18 | .079742 |
| civllib | -.0001846 | .0007183 | 8 | .078893 |
| prexports | -.0005476 | .002645 | 29 | .054696 |
| polrights | -.0000816 | .0004163 | 27 | .050608 |
| rfexdist | -2.71e-06 | .0000142 | 34 | .046846 |
| age | -1.79e-06 | .0000106 | 2 | .038836 |
| wardummy | -.000138 | .0008583 | 39 | .035901 |
| foreign | .0001651 | .0010763 | 14 | .035183 |
| english | -.0002166 | .0013975 | 11 | .034352 |
| labforce | 1.95e-09 | 1.77e-08 | 20 | .029665 |
| ethnol | .0001246 | .0010726 | 13 | .023176 |
| french | .000088 | .0007816 | 15 | .021807 |
| spanish | .000089 | .0009374 | 36 | .021585 |
| stdbmp | -3.24e-07 | 2.83e-06 | 37 | .021269 |
| abslat | 1.84e-07 | .000019 | 1 | .016268 |
| workpop | -.0001042 | .0013305 | 40 | .015206 |
| outwaror | -.0000245 | .00035 | 26 | .014345 |
| popg | .0021388 | .0272493 | 28 | .01341 |
| highenroll | -.0003523 | .0045785 | 17 | .01317 |
| brit | -.000021 | .0003203 | 5 | .010822 |
| jewish | -.000091 | .0016002 | 19 | .010737 |
| publedupct | .000255 | .0143465 | 32 | .010524 |
| revncoup | 7.98e-06 | .0005547 | 33 | .0090622 |
| area | -2.05e-09 | 5.24e-08 | 3 | .0088675 |
| Always | | | | |
| _cons | .0705111 | .0208966 | 0 | 1 |

Note: Coefficient posterior means and std. dev. estimated from 22,019 models.
 Note: Default prior is used for parameter g.

Commonly in BMA, a predictor is considered important if its PIP is greater than 0.5. In this example, we see that several predictors, such as log of GDP in 1960, fraction Confucian, life expectancy, equipment investment, sub-Saharan indicator, fraction Muslim, and rule of law, play an important role in explaining economic growth. On the other hand, predictors with low PIPs, such as surface area with PIP below 0.01, contribute little to explaining the economic growth.

◀

▶ Example 18: Model and variable-inclusion summaries

Let's continue with [example 17](#) and use `bmastats models` to explore the top models visited by `bmaregress`. To limit the number of predictors displayed for each model to only those with PIP above 0.1, we specify the `pipcutoff(0.1)` option.

```
. bmastats models, pipcutoff(0.1)
Computing model probabilities ...
Model summary                                Number of models:
                                             Visited = 22,019
                                             Reported = 5
```

| | Analytical PMP | Frequency PMP | Model size |
|------|----------------|---------------|------------|
| Rank | | | |
| 1 | .01869 | .01019 | 10 |
| 2 | .01632 | .008705 | 9 |
| 3 | .01088 | .00448 | 8 |
| 4 | .007274 | .00335 | 7 |
| 5 | .006697 | .00289 | 7 |

Note: Using analytical PMP for model ranking.

Variable-inclusion summary

| | Rank 1 | Rank 2 | Rank 3 | Rank 4 | Rank 5 |
|-------------|-----------|-----------|-----------|-----------|-----------|
| confucian | x | x | x | x | x |
| ecoorg | x | x | | | |
| equipinv | x | x | x | x | x |
| gdp60 | x | x | x | x | x |
| lifeexp | x | x | x | x | x |
| muslim | x | x | x | x | x |
| nequipinv | x | x | | | |
| protestants | x | | | x | |
| ruleoflaw | x | x | | | |
| subsahara | x | x | x | | x |
| mining | | | x | | |
| yrsopen | | | x | x | x |

Legend:

x - estimated

By default, the command displays the top five models ranked by PMP. It reports both analytical and frequency PMPs, which are similar because the model converged. It also reports the model sizes. The predictors included in each reported model are displayed in a separate table. The `pipcutoff(0.1)` option did not have an effect in our example, because all predictors in these top five models have a PIP greater than 0.1, which can be verified by running the command without this option.

The top model has a rather low PIP of 0.019 and includes 10 predictors, among which there are all 7 important predictors. We can list the PIPs for the predictors of the top model by using `bmastats pip`:

```
. bmastats pip confucian ecoorg equipinv gdp60 lifeexp muslim nequipinv
> protestants ruleoflaw subsahara
Posterior inclusion probability (PIP)
No. of obs          =      72
No. of predictors   =      41
    Groups          =      41
    Always          =       0
    Reported        =      10
No. of models       = 22,019
Mean model size     =   9.593
```

| | PIP | Group |
|-------------|--------|-------|
| gdp60 | .99977 | 16 |
| confucian | .99861 | 9 |
| lifeexp | .95731 | 22 |
| equipinv | .95457 | 12 |
| subsahara | .77207 | 38 |
| muslim | .67147 | 24 |
| ruleoflaw | .53652 | 35 |
| ecoorg | .48642 | 10 |
| protestants | .46548 | 30 |
| nequipinv | .4349 | 25 |
| Always | | |
| _cons | 1 | 0 |

Note: Using analytical PMPs.

The other three predictors have PIPs above 0.4.

The rank 2 model with a PMP of 0.016 includes the same predictors as the top model, except for `protestants`. The remaining models have relatively lower PMPs. The presence of so many models with similar low probabilities means that there are many plausible models that can be considered for these data. Thus, if we were to choose just one, it would have been difficult to select the “best” one.

We may be also interested in some specific regression models from the BMA model sample. For example, we may be interested in models that include any of the seven important predictors, which we can specify in the `include()` option. And, in addition to the HPM, we may want to explore the median probability model (MPM). MPM is the model that includes only predictors with a PIP greater or equal to 0.5 (Fletcher 2018). The `include()` option may select many models, so we consider only those with PMP above 0.0025.

```
. bmastats models, hpm mpm pmpcutoff(0.0025)
> include(gdp60 confucian lifeexp equipinv subsahar muslim ruleoflaw)
Computing model probabilities ...
```

```
Model summary                                Number of models:
                                             Visited = 22,019
                                             Reported = 13
```

| | Analytical PMP | Frequency PMP | Model size |
|----------|----------------|---------------|------------|
| Rank | | | |
| (HPM) 1 | .01869 | .01019 | 10 |
| 2 | .01632 | .008705 | 9 |
| 7 | .005889 | .003555 | 8 |
| 9 | .005764 | .0039 | 10 |
| 15 | .004007 | .00218 | 11 |
| 16 | .003959 | .00171 | 9 |
| 17 | .003956 | .001865 | 11 |
| 18 | .003762 | .002795 | 11 |
| 21 | .003527 | .001275 | 8 |
| 22 | .003362 | .00143 | 11 |
| 26 | .003097 | .00111 | 10 |
| 30 | .002701 | .00149 | 11 |
| (MPM) 33 | .002628 | .00183 | 7 |

Notes: Using analytical PMP for model ranking.
3,932 models with PMP less than .0025 not shown.

Note: Use option **variable** to display variable-inclusion table for more than 12 models.

There are 13 models that include the important predictors and have a PMP above 0.0025, and there are 3,932 more models with a PMP below that. The MPM includes our seven important predictors. Its PMP is only 0.0026. With many predictors, it is not unreasonable to see so many models with low PMP in the absence of the strong information in the data about the model.

The `bmastats msize` command summarizes the sizes of the explored models. The model size is the number of predictors included in the model. In addition to the posterior mean size, which is also reported in the header of `bmaregress`, the command reports the posterior median size and the minimum and maximum model sizes. For comparison, it also reports the summaries for the prior model-size distribution.

```
. bmastats msize
Model-size summary
Number of models = 22,019
Model size:
  Minimum = 4
  Maximum = 22
```

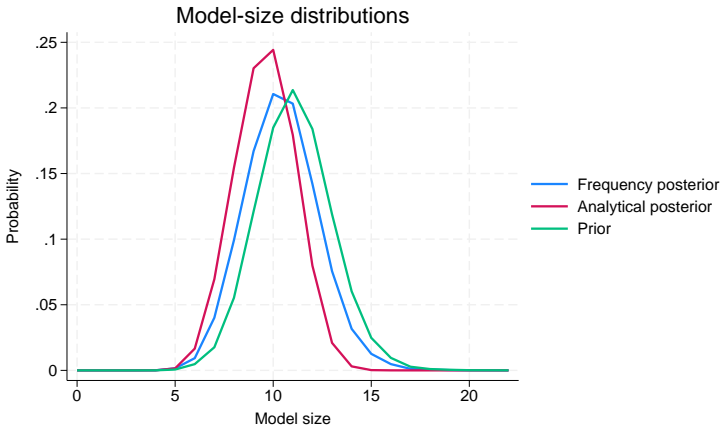
| | Mean | Median |
|------------|---------|--------|
| Prior | | |
| Analytical | 11.0877 | 11 |
| Posterior | | |
| Analytical | 9.5933 | 10 |
| Frequency | 10.4171 | 10 |

The smallest model includes only 4 predictors, and the largest model includes 22 predictors. The analytical posterior median size is 10 compared with the mean of 9.59. The posterior model-size

summaries are similar to the prior ones. And frequency model-size summaries computed from the MCMC sample are similar to the analytical ones, as would be expected for the converged model.

We can plot the entire distributions of model sizes by using `bmagraph msize`.

```
. bmagraph msize
```



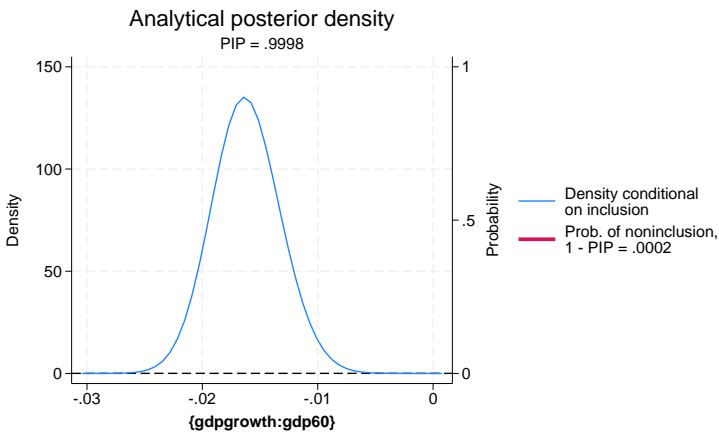
The model-size distributions are fairly similar with the posterior one shifted to the left, favoring slightly smaller models than what was assumed a priori.



Example 19: Coefficient summaries

Let's use `bmagraph coefdensity` to look at the distributions of regression coefficients for `gdp60` and `ruleoflaw`.

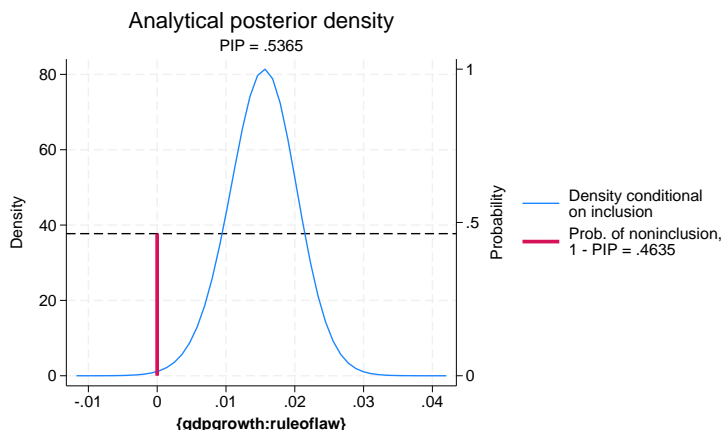
```
. bmagraph coefdensity {gdp60}
```



For coefficient `{gdp60}` (or using its full name `{gdpgrowth:gdp60}`), the probability of noninclusion is very low, 0.0002, so the red line that represents it is not even visible on the graph. Thus the posterior density of `{gdp60}` is essentially a continuous normal-like density, centered at about -0.015 with most of its mass between roughly -0.025 and -0.005 , away from 0.

We now look at the posterior density for the `{ruleoflaw}` coefficient.

```
. bmagrph coefdensity {ruleoflaw}
```



The probability of noninclusion for `{ruleoflaw}` is about 0.46, so we see the red vertical line meets the horizontal reference line at roughly 0.46. Conditional on the inclusion, the continuous density is centered around 0.015 with most of its mass between 0 and 0.03.

The posterior means and standard deviations reported by `bmaregress` are computed with respect to the above mixtures of distributions.

If we want to compute CrIs, we need to use `bmacoefsample` first to obtain samples of regression coefficients from their posterior distributions, shown above for `{gdp60}` and `{ruleoflaw}`. To run `bmacoefsample`, we need to save our BMA sampling results first, which we can do on replay:

```
. bmaregress, saving(bmadata_econgrowth)
note: file bmadata_econgrowth.dta saved.
. bmacoefsample, mcmcsize(10000) rseed(18)
Simulation (10000): ...5000...10000 done
```

`bmacoefsample` uses the same MCMC size as `bmaregress` to generate the sample, unless the `mcmcsize()` option is specified. Here we do not need 200,000 samples of coefficients, so we specify a smaller number of 10,000. The size of this sample affects the accuracy of the MCMC-based computations of the posterior summaries of regression coefficients.

Once we have an MCMC sample of coefficients, many Bayesian postestimation commands are available. For example, we can use `bayesstats summary` to compute the 95% HPD CrIs for the coefficients of, say, `equipinv` and `ruleoflaw`.

```
. bayesstats summary {gdpgrowth: equipinv ruleoflaw}, hpd
Posterior summary statistics                                MCMC sample size =    10,000
```

| gdpgrowth | Mean | Std. dev. | MCSE | Median | HPD | |
|-----------|----------|-----------|---------|----------|----------------------|----------|
| | | | | | [95% cred. interval] | |
| equipinv | .1653323 | .0627102 | .000627 | .1684731 | 0 | .2607861 |
| ruleoflaw | .0082453 | .0084968 | .000085 | .0078141 | 0 | .0219461 |

The first two columns report the posterior means and standard deviations based on the MCMC simulation, which approximate the analytical ones reported by `bmaregress`. The MCMC-based estimates are similar

to the analytical ones. The MCSE column reports the Monte Carlo standard errors, which describes the precision of the posterior-mean estimates and depends on the size of the MCMC sample specified in `mcmcsize()` with `bmacoefsample`. The last two columns report the 95% HPD CrIs. For instance, the reported 95% CrI for `{ruleoflaw}` is consistent with its posterior density shown above.

We can also use `bayesstats summary` to compute posterior summaries for expressions of coefficients. Suppose we are interested in estimating the posterior probability that both coefficients for `equipinv` and `ruleoflaw` are positive. We can do this as follows:

```
. bayesstats summary
((({gdpgrowth:ruleoflaw} > 0) & ({gdpgrowth:equipinv} > 0)))
Posterior summary statistics                                MCMC sample size = 10,000
  expr1 : ({gdpgrowth:ruleoflaw} > 0) & ({gdpgrowth:equipinv} > 0)
```

| | Mean | Std. dev. | MCSE | Median | Equal-tailed [95% cred. interval] |
|-------|------|-----------|---------|--------|--------------------------------------|
| expr1 | .496 | .500009 | .004948 | 0 | 0 1 |

The probability of both of these coefficients being positive is about 50%. ◀

▶ Example 20: Jointness measures

In the context of BMA, we can explore additional characteristics about the included predictors such as their tendencies of being included in a model together, separately, or independently. This is described by the so-called [jointness measures](#).

Let's compute jointness measures for some predictors. First, we compute these measures for a pair of predictors with high PIPs: `gdp60` and `lifeexp`. We use the `bmastats jointness` command for this.

```
. bmastats jointness gdp60 lifeexp
Computing model probabilities ...
Variables: gdp60 lifeexp
```

| | Jointness |
|-------------------|-----------|
| Doppelhofer-Weeks | 6.944544 |
| Ley-Steel type 1 | .9575255 |
| Ley-Steel type 2 | 22.54354 |
| Yule's Q | .9980741 |

Notes: Using analytical PMPs. See `thresholds`.

All reported jointness measures suggest that the two predictors are complements, which means that they each contain additional information that helps explain the outcome. For instance, the Doppelhofer-Weeks measure is $6.94 > 2$, which means “strong jointness”, and the Ley-Steel type 2 measure is $22.54 > 10$, which also indicates “strong jointness”; see [\[BMA\] bmastats jointness](#) for details.

Second, let's compute jointness measures for a pair of predictors with lower PIPs, for example, `polrights` and `civllib`.

```
. bmastats jointness polrights civllib
Computing model probabilities ...
Variables: polrights civllib
```

| | Jointness |
|-------------------|-----------|
| Doppelhofer-Weeks | -2.669263 |
| Ley-Steel type 1 | .0024346 |
| Ley-Steel type 2 | .0024405 |
| Yule's Q | -.8703767 |

Notes: Using analytical PMPs. See thresholds.

All reported jointness measures suggest that the two predictors are substitutes, which means that they do not bring any additional information to help explain the outcome when included together. For instance, the Doppelhofer-Weeks measure is $-2.67 < -2$, which means “strong disjointness”, and the Ley-Steel type 2 measure is $0.0024 < 0.01$, which indicates “decisive disjointness”.

◀

► Example 21: BMA regression of economic growth using random parameter g

By default, `bmaregress` uses a fixed value for the g parameter of a Zellner's g -prior, which limits the class of explored regression models. There is no one optimal value for g . A more general class of models can be considered by allowing g to vary between models according to a prespecified hyperprior distribution.

The `bmaregress` command supports a number of hyperpriors for g : `betashrink`, `betabench`, `hyperg`, `hypergn`, `zsiow`, and `robust`. Below, we use the `betabench` prior for illustration. This hyperprior is controlled by a parameter a , $a > 0$, and it is equivalent to specifying the $\text{Beta}(a \times \max(n, p^2), a)$ prior distribution on the shrinkage $\delta = g/(g + 1)$. We choose $a = 10$, which corresponds to the $\text{Beta}(16,810, 10)$ prior. The prior mean for the shrinkage is thus very close to 1, 0.9994 to be exact. We first run the model without showing the output table. We do not want to focus on the results before we check the MCMC convergence and make sure that the sample we generated is representative of the model posterior distribution.

```
. bmaregress gdpgrowth abslat-yrsopen, mprior(uniform) gprior(betabench 10)
> rseed(18) notable

Burn-in ...
Simulation ...
Computing model probabilities ...

Bayesian model averaging          No. of obs          =          72
Linear regression                 No. of predictors =          41
MC3 and adaptive MH sampling                    Groups =          41
                                                Always =           0
No. of models                     =       1,685
  For CPMP >= .9                   =       1,070
Mean model size                    =      10.870
Burn-in                             =       2,500
MCMC sample size                   =     10,000
Acceptance rate                     =       0.5655

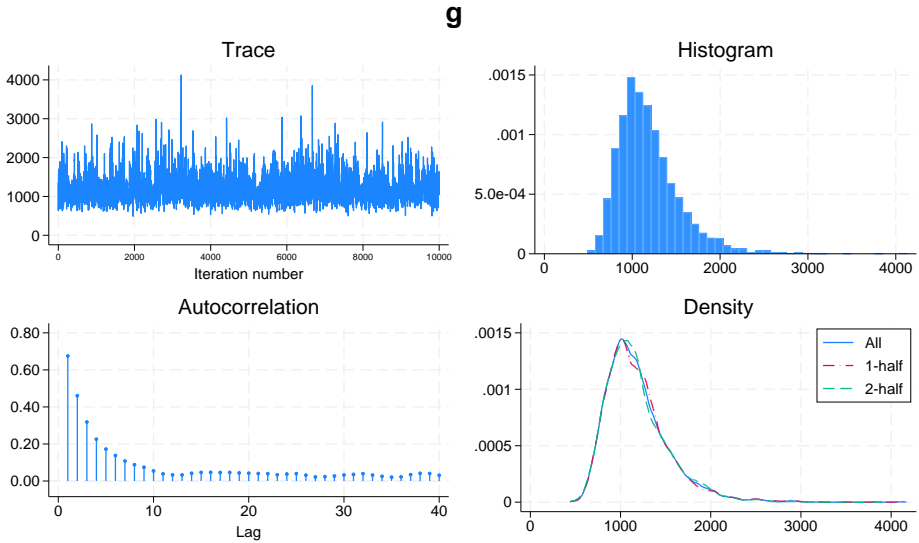
Priors:
Models: Uniform                    Mean sigma2        =      .000054
  Cons.: Noninformative
  Coef.: Zellner's g
    g: Benchmark-beta-shrinkage(10)
  sigma2: Noninformative

Sampling correlation = 0.1080
```

Here the MC3 algorithm did not converge. It visited only 1,685 models, a very small portion of the entire model space, and, not surprisingly, the sampling correlation is relatively low, about 11%, which suggests inadequate exploration of the model space.

But if we look at the diagnostics plot of the g parameter, it shows sufficient mixing with diminishing autocorrelation after 10 lags and does not raise any convergence issues.

```
. bayesgraph diagnostics {g}
```



So the convergence for g does not imply convergence over the model space. To improve the latter, we specify a larger initial value for g , 1,000, which is closer to the prior mean of g , and increase the MCMC sample size to 40,000.

```
. bmaregress gdpgrowth abslat-yrsopen, mprior(uniform) gprior(betabench 10)
> ginit(1000) mcmcsize(40000) rseed(18)
```

```
Burn-in ...
Simulation ...
Computing model probabilities ...
```

```
Bayesian model averaging
Linear regression
MC3 and adaptive MH sampling
```

```
No. of obs      =      72
No. of predictors =      41
Groups         =      41
  Always      =       0
No. of models   =   5,985
  For CPMP >= .9 =   3,683
Mean model size =   10.974
Burn-in        =    2,500
MCMC sample size = 40,000
Acceptance rate =   0.5590

Mean sigma2    =   .000053
```

```
Priors:
Models: Uniform
Cons.: Noninformative
Coef.: Zellner's g
      g: Benchmark-beta-shrinkage(10)
sigma2: Noninformative

Sampling correlation = 0.3115
```

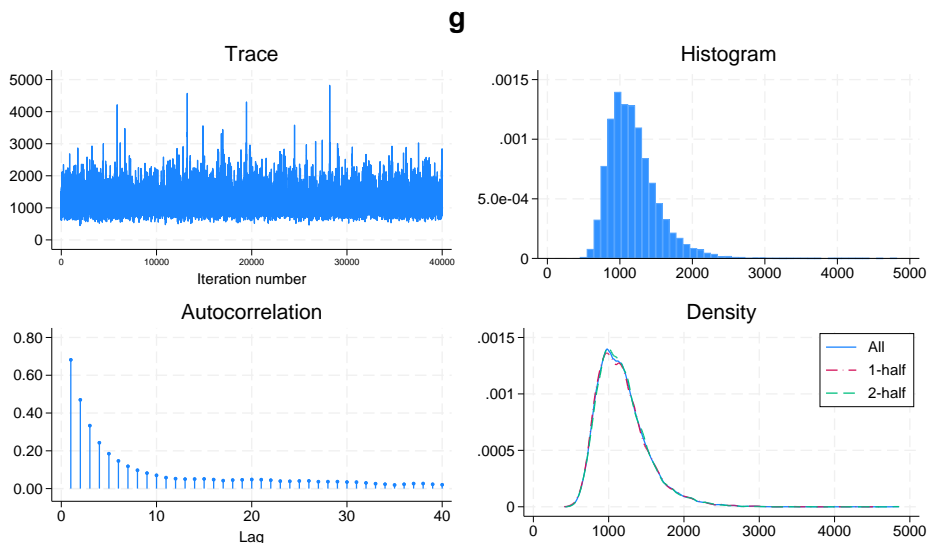
| gdpgrowth | Mean | Std. dev. | Group | PIP |
|-------------|-----------|-----------|-------|---------|
| gdp60 | -.0162014 | .0031171 | 16 | 1 |
| confucian | .0571647 | .0148002 | 9 | .98813 |
| lifeexp | .0008541 | .0003227 | 22 | .95098 |
| equipinv | .1569886 | .0662325 | 12 | .93085 |
| muslim | .0098991 | .0079137 | 24 | .69912 |
| subsahara | -.0105384 | .0087295 | 38 | .68073 |
| yrsoopen | .0072551 | .007865 | 41 | .51823 |
| ruleoflaw | .0072071 | .0081836 | 35 | .4953 |
| protestants | -.0060056 | .0070656 | 30 | .48492 |
| mining | .0191716 | .0228082 | 23 | .47828 |
| ecoorg | .0012255 | .0014384 | 10 | .47625 |
| nequipinv | .0271594 | .0324673 | 25 | .46795 |
| prscenroll | .0047258 | .0098377 | 31 | .24322 |
| buddha | .0030845 | .0063681 | 6 | .23272 |
| latamerica | -.0016883 | .0041869 | 21 | .21848 |
| blmktpm | -.0014396 | .0033853 | 4 | .18812 |
| civllib | -.0004035 | .0010327 | 8 | .17472 |
| catholic | -.0000176 | .0032274 | 7 | .14413 |
| polrights | -.0001868 | .0006425 | 27 | .12987 |
| hindu | -.0033699 | .0118713 | 18 | .11532 |
| prexports | -.0010904 | .0037068 | 29 | .1103 |
| age | -4.86e-06 | .0000174 | 2 | .10203 |
| english | -.000586 | .0022521 | 11 | .099375 |
| wardummy | -.0003553 | .0013681 | 39 | .099225 |
| rfexdist | -4.92e-06 | .0000187 | 34 | .09735 |
| foreign | .0004337 | .0017529 | 14 | .09035 |
| labforce | 7.55e-09 | 3.71e-08 | 20 | .07665 |
| abslat | -5.66e-07 | .0000433 | 1 | .06855 |
| ethnol | .0003364 | .0017694 | 13 | .06445 |
| spanish | .0002713 | .0016564 | 36 | .060425 |
| outwaror | -.0001108 | .0007231 | 26 | .05725 |
| workpop | -.0002883 | .0023882 | 40 | .052925 |
| popg | .0066005 | .0543594 | 28 | .052025 |
| stdbmp | -5.66e-07 | 3.70e-06 | 37 | .049025 |
| brit | -.0000933 | .0007186 | 5 | .046375 |
| area | -9.87e-09 | 1.34e-07 | 3 | .04465 |
| jewish | -.0003108 | .0031789 | 19 | .0432 |
| french | .0001371 | .0009942 | 15 | .04185 |
| highenroll | -.0008954 | .0075328 | 17 | .03785 |
| publedupct | .0009074 | .0244793 | 32 | .03205 |
| revncoup | -8.58e-06 | .0009061 | 33 | .03055 |
| Always | | | | |
| _cons | .0709041 | .0237199 | 0 | 1 |

Note: Coefficient posterior means and std. dev. estimated from 5,985 models.

| | Mean | Std. dev. | MCSE | Median | Equal-tailed [95% cred. interval] | |
|-----------|----------|-----------|---------|----------|--------------------------------------|----------|
| g | 1184.255 | 343.643 | 5.20567 | 1128.086 | 700.552 | 2033.428 |
| Shrinkage | .9990924 | .000239 | 3.5e-06 | .9991143 | .9985746 | .9995085 |

The sampling correlation improves; it is 31% now compared with 11% earlier. In absolute terms, this may still seem low but, given the size of the model space, 2^{41} , is probably acceptable. Achieving very high sampling correlation, say, 90%, for this model may take a long time. The diagnostic plots for g are better too.

```
. bayesgraph diagnostics {g}
```



We obtain results similar to those for a fixed g in [example 17](#). The estimated shrinkage posterior mean of 0.999 matches closely the fixed value of 0.994. Thus, the chosen prior for g does not seem to have much of an effect on the results.

◀

Stored results

`bmaregress` stores the following in `e()`:

Scalars

| | |
|----------------------------------|--|
| <code>e(N)</code> | number of observations |
| <code>e(p)</code> | number of predictors |
| <code>e(p_groups)</code> | number of groups of predictors |
| <code>e(p_always)</code> | number of always included predictors |
| <code>e(k_models)</code> | number of visited models |
| <code>e(k_models_cpmp)</code> | number of highest PMP models accounting for at least 90% of CPMP |
| <code>e(k_models_all)</code> | number of all available models |
| <code>e(msize_mean)</code> | posterior mean model size as displayed in the header |
| <code>e(msize_mean_a)</code> | analytical posterior mean model size; not available with random g |
| <code>e(msize_mean_f)</code> | frequency posterior mean model size; not available with model enumeration |
| <code>e(msize_mean_prior)</code> | prior mean model size |
| <code>e(mcmcsize)</code> | MCMC size with sampling |
| <code>e(burnin)</code> | number of burn-in iterations with sampling |
| <code>e(thinning)</code> | thinning interval with sampling |
| <code>e(arate)</code> | acceptance rate with sampling |
| <code>e(sampcorr)</code> | correlation between frequency and analytical PMP; not available with model enumeration |
| <code>e(sigma2)</code> | posterior mean of the error variance |
| <code>e(g)</code> | value of g when g is a fixed constant |
| <code>e(g_init)</code> | initial g -value with sampling |
| <code>e(shrinkage)</code> | shrinkage with fixed g |
| <code>e(groupfv)</code> | 1 if <code>groupfv</code> is specified; 0 otherwise |
| <code>e(clevel)</code> | credible interval level with random g |
| <code>e(hpd)</code> | 1 if <code>hpd</code> is specified; 0 otherwise (random g) |

Macros

| | |
|-------------------------------|---|
| <code>e(cmd)</code> | <code>bmregress</code> |
| <code>e(cmdline)</code> | command as typed |
| <code>e(title)</code> | first title appearing in header |
| <code>e(title2)</code> | second title appearing in header |
| <code>e(depvar)</code> | name of dependent variable |
| <code>e(wtype)</code> | weight type |
| <code>e(wexp)</code> | weight expression |
| <code>e(indepvars)</code> | names of predictors included in the models |
| <code>e(alwaysvars)</code> | names of predictors that are always included |
| <code>e(omitvars)</code> | names of predictors marked as omitted |
| <code>e(sampling)</code> | sampling algorithm |
| <code>e(sampling_lab)</code> | label for sampling algorithm |
| <code>e(heredity)</code> | heredity rule; only available in the presence of interactions |
| <code>e(mprior)</code> | model prior option |
| <code>e(mprior_dist)</code> | name of model prior distribution |
| <code>e(mprior_lab)</code> | label for model prior distribution |
| <code>e(gprior)</code> | g -prior option |
| <code>e(gprior_dist)</code> | name of g -prior distribution |
| <code>e(gprior_lab)</code> | label for g -prior distribution |
| <code>e(initial)</code> | model prior initial option |
| <code>e(ginitial)</code> | g -prior initial option |
| <code>e(modelfilename)</code> | name of the file with simulation results |
| <code>e(rngstate)</code> | random-number state at the time of simulation |

Matrices

| | |
|-------------------------------|--|
| <code>e(b_bma)</code> | posterior means |
| <code>e(V_bma)</code> | posterior variance–covariance matrix |
| <code>e(b_bma_c)</code> | posterior means in estimation (recentered) metric |
| <code>e(V_bma_c)</code> | posterior variance–covariance matrix in estimation (recentered) metric |
| <code>e(pip)</code> | probabilities of inclusion |
| <code>e(group)</code> | group indices for predictors |
| <code>e(mprior_params)</code> | parameters of model prior distribution (if any) |
| <code>e(gprior_params)</code> | parameters of g -prior (if any) |
| <code>e(modelinit)</code> | initial model state binary vector with sampling |

Functions

| | |
|------------------------|-------------------------|
| <code>e(sample)</code> | marks estimation sample |
|------------------------|-------------------------|

Methods and formulas

Methods and formulas are presented under the following headings:

- Model assumptions and generic formulas*
- Priors on the model space*
- Priors for parameter g*
 - Fixed g priors*
 - Random g priors*
- Centering*
- Conditional posterior distribution of model parameters*
- Conditional posterior predictive distribution*
- MCMC algorithms*
 - Fixed g parameter*
 - Random g parameter*
- Inference*
 - Posterior model probability*
 - Posterior inclusion probability*
 - Posterior distributions of regression coefficients*
 - Posterior means and variances of model parameters*

Model assumptions and generic formulas

Consider a regression model with p predictors. Let $\mathcal{M}_F = \{M_1, M_2, \dots, M_{2^p}\}$ denote the full space of models formed by considering all 2^p possible subsets of p variables, and let $J_F = \{1, 2, \dots, 2^p\}$ denote the full set of the corresponding indices. Let model $M_j \in \mathcal{M}_F$ include a distinct subset of the p variables for each $j \in J_F$, and let p_j be the number of variables included in M_j ; that is, the model size $|M_j| = p_j$.

Consider a sample of observations y_i 's and x_{ik} 's on, respectively, outcome Y and p predictors X_1, X_2, \dots, X_p , where $i = 1, 2, \dots, n$ and $k = 1, 2, \dots, p$. For each $j \in J_F$, consider a linear regression model M_j using a subset of p_j variables,

$$y_i = \alpha + \mathbf{x}_{i,j}\beta_j + \epsilon_{i,j}$$

where α is an unknown intercept, β_j is a $p_j \times 1$ vector of unknown (model-specific) regression coefficients, $\mathbf{x}_{i,j}$ is a $1 \times p_j$ vector of observed values on the variables included in the model, and error terms $\epsilon_{i,j}$'s \sim i.i.d. $N(0, \sigma^2)$.

We can write the above using a matrix notation,

$$\mathbf{y} = \alpha \mathbf{1}_n + \mathbf{X}_j \beta_j + \boldsymbol{\epsilon}_j$$

where $\mathbf{y} = (y_1, y_2, \dots, y_n)'$ is an $n \times 1$ vector of outcome values, $\mathbf{1}_n$ is a $n \times 1$ vector of ones, \mathbf{X}_j is an $n \times p_j$ design matrix, and $\boldsymbol{\epsilon}_j = (\epsilon_{1,j}, \epsilon_{2,j}, \dots, \epsilon_{n,j})'$ is an $n \times 1$ vector of model-specific error terms.

In a Bayesian linear regression, model parameters α , β_j , and σ^2 (or, equivalently, σ) are assumed to have prior distributions, which are conditional on model M_j . In a BMA framework, model M_j or, more precisely, its index is an unknown itself and thus assigned a prior distribution just like any other model parameter. A model prior is a discrete prior, $\{P(M_j)\}_{j \in J_F}$, specified over model space \mathcal{M}_F .

The priors for a BMA linear regression are

$$\begin{aligned} M_j &\sim P(M_j) \\ \beta_j | \alpha, \sigma, M_j &\sim N_{p_j}\{\mathbf{0}, \sigma^2 g(\mathbf{X}_j' \mathbf{X}_j)^{-1}\} \\ \alpha | \sigma, M_j &\propto 1 \\ \sigma | M_j &\propto \sigma^{-1} \end{aligned}$$

where $N_{p_j}(\cdot, \cdot)$ denotes a p_j -dimensional multivariate normal distribution and the choices for $P(M_j)$ are described in [Priors on the model space](#). The intercept α and the error standard deviation σ are assumed to have noninformative priors. The regression coefficients β_j are assumed to follow a Zellner's g -prior (1986), where $g > 0$ controls the shrinkage of coefficients toward 0, and the excluded coefficients are assumed to have a prior point mass at 0; that is, they are assumed to be exact zeros. In the above and throughout, we also implicitly condition on \mathbf{X}_j .

The parameter g in Zellner's g -prior can be viewed as fixed or random. With a random g , a joint prior $P(g, M_j) = P(g|M_j)P(M_j)$ is considered, where $P(g|M_j)$ is a hyperprior (or the so-called g -prior) assumed for g . The choices for a g -prior are discussed in [Priors for parameter \$g\$](#) .

With a random g , the priors for a BMA linear regression are

$$\begin{aligned} M_j &\sim P(M_j) \\ g &\sim P(g|M_j) \\ \beta_j|\alpha, \sigma, g, M_j &\sim N_{p_j}\{\mathbf{0}, \sigma^2 g(\mathbf{X}_j'\mathbf{X}_j)^{-1}\} \\ \alpha|\sigma, g, M_j &\propto 1 \\ \sigma|g, M_j &\propto \sigma^{-1} \end{aligned}$$

In Bayesian analysis, the inference about model parameters is based on their posterior distributions, and the prediction of new data is based on the posterior predictive density. So the estimation of these distributions is central to Bayesian estimation. In BMA, we are also interested in estimating PMPs and PIPs. And, because we consider multiple models, we need to distinguish between the posterior distributions conditional on a model and those over all models. In what follows, we give general definitions for these distributions and probabilities and provide specific formulas in later sections.

The PMP for model M_j is

$$P(M_j|\mathbf{y}) = \frac{f(\mathbf{y}|M_j)P(M_j)}{\sum_{l \in J_F} f(\mathbf{y}|M_l)P(M_l)}$$

where $f(\mathbf{y}|M_j)$ is the marginal likelihood of M_j .

The PIP for variable k is

$$\text{PIP}(X_k) = \sum_{j \in J_F} I(X_k \in M_j)P(M_j|\mathbf{y})$$

where $I(\cdot)$ is the indicator function.

The posterior distribution of β over all models is

$$g(\beta|\mathbf{y}) = \sum_{j \in J_F} g(\beta|\mathbf{y}, M_j)P(M_j|\mathbf{y})$$

where $g(\beta|\mathbf{y}, M_j)$ is the posterior distribution of β for a Bayesian linear regression model M_j . Posterior distributions of α and σ^2 can be defined in the same fashion.

Similarly, for a new observation (y^*, \mathbf{x}^*) , the posterior predictive density over all models is

$$f(y^*|\mathbf{y}, \mathbf{X}, \mathbf{x}^*) = \sum_{j \in J_F} f(y^*|\mathbf{y}, \mathbf{X}, \mathbf{x}_j^*, M_j)P(M_j|\mathbf{y})$$

where $f(y^*|\mathbf{y}, \mathbf{X}, \mathbf{x}_j^*, M_j)$ is the posterior predictive density for model M_j .

Priors on the model space

The BMA framework incorporates model uncertainty by specifying a prior on the model space. Each model in the model space can be uniquely represented by a p -dimensional binary vector $\gamma = \{\gamma_k: k = 1, 2, \dots, p\}$, in which element γ_k equals 1 if and only if the k th predictor is included in the model. Therefore, specifying a prior on the model space is equivalent to specifying a prior on the space of p -dimensional binary vectors. The model size, denoted by $\omega = |\mathcal{M}|$, refers to the number of predictors included in the model. That is,

$$\omega = \sum_{k=1}^p \gamma_k$$

`bmaregress` supports the following model priors in the `mprior()` option: `betabinomial`, the default, meaning `betabinomial 1 1`; `betabinomial # #`; `betabinomial #`; `uniform`; `binomial #`; `binomial` (where `# = 0.5`); and `binomial ...` (with predictor-specific IPs). We define these priors below.

Beta-binomial prior, option `mprior(betabinomial ...)`. This is the default prior, with shape parameters of 1. Consider a binomial prior defined below, where all predictors have a common probability of inclusion p_{inc} . Then specify a hierarchical prior for the parameter p_{inc} as a beta distribution. Stata provides two options to specify the hyperparameters for this beta prior.

A user can specify `mprior(betabinomial #1 #2)` with two hyperparameters $a = \#_1$ and $b = \#_2$, which are the shape parameters of the beta distribution. In this case, the prior model probability is

$$p(\gamma) = \frac{\Gamma(a+b)}{\Gamma(a)\Gamma(b)} \frac{\Gamma(a+\omega)\Gamma(b+p-\omega)}{\Gamma(a+b+p)}$$

where $\Gamma(\cdot)$ is a gamma function.

Under this prior, the expected model size is

$$E(\omega) = \frac{a}{a+b}p$$

A user can specify `mprior(betabinomial #)` with the prior expected model size $w = \#$ instead, where $0 < w < p$. The distribution for p_{inc} is then $\text{Beta}\{1, (p-w)/w\}$. In this case, $E(\omega) = w$.

This alternative parameterization may be more convenient because it might be easier to think of a prior value for the expected model size than for the shape parameters of the beta distribution.

Uniform prior, option `mprior(uniform)`. It assigns an equal probability of $1/2^p$ for each model M_j in the model space.

Binomial prior, option `mprior(binomial ...)`. Let $p_{\text{inc},k}$ be the prior probability of inclusion for the k th predictor. Assume that the inclusion of each predictor is independent; then the binomial prior specifies

$$p(\gamma) = \prod_{k=1}^p p_{\text{inc},k}^{\gamma_k} (1 - p_{\text{inc},k})^{1-\gamma_k}$$

If all predictors have a common probability of inclusion p_{inc} , the binomial prior becomes

$$p(\gamma) = p_{\text{inc}}^{\omega} (1 - p_{\text{inc}})^{p-\omega}$$

A detailed discussion of different choices for a prior on the model space can be found in [Ley and Steel \(2009\)](#).

Priors for parameter g

Parameter g in a Zellner's g -prior can be fixed or random with a given hyperprior. The fixed g cases supported by **bmaregress** in the `gprior()` option are `bench` (the default), `uip`, `ric`, `sqrtn`, `fixed #`, and `eb1`. We define these cases below.

Fixed g priors

Benchmark prior, $g = \max(n, p^2)$, option `gprior(bench)`. This prior is the default. It was suggested by [Fernández, Ley, and Steel \(2001a\)](#) and is a combination of the unit-information and risk-inflation-criterion priors, defined below. The authors found it to perform well in a variety of cases with respect to a model's predictive performance.

Unit-information prior, $g = n$, option `gprior(uip)`. Introduced in [Kass and Raftery \(1995\)](#), the unit-information prior specifies a prior with the variance proportional to the sample size. For this choice of g , the log Bayes-factors behave asymptotically like the BIC. In this case, the BIC, given by the negative log likelihood plus a penalty proportional to $\log(n)$, corresponds to the negative log posterior.

Risk inflation criterion, $g = p^2$, option `gprior(ric)`. Proposed by [Foster and George \(1994\)](#), the risk inflation criterion is based on a minimax criterion for variable selection. Specifically, the criterion proposed by the authors is the negative log likelihood plus a penalty proportional to $2 \log(p)$, and this choice corresponds to $g = p^2$.

Square-root n prior, $g = \sqrt{n}$, option `gprior(sqrtn)`. One of the fixed g priors suggested by [Porwal and Raftery \(2022b\)](#).

Empirical Bayes local, option `gprior(eb1)`. The local empirical Bayes prior ([Liang et al. 2008](#)) uses a different fixed g_j for each model M_j . It is the maximum marginal-likelihood estimate constrained to be nonnegative. For model M_j with $p_j > 0$, it is defined as

$$\hat{g}_j^{\text{EBL}} = \max(F_j - 1, 0)$$

where F_j is the standard F statistic for model M_j defined as

$$F_j = \frac{(n - 1 - p_j) R_{j,\text{ols}}^2}{p_j (1 - R_{j,\text{ols}}^2)}$$

$R_{j,\text{ols}}^2$ in the above is the R^2 from the ordinary least-squares (OLS) linear regression corresponding to model M_j .

\hat{g}_j^{EBL} maximizes the marginal likelihood (2). For the null model, with $p_j = 0$, we set $\hat{g}_j^{\text{EBL}} = 1$, by convention.

Random g priors

The supported random g priors in the `gprior()` option are `betashrink #1 #2`, `betabench #`, `hyperg #`, `hypergn #`, `zsiow`, and `robust`. These are commonly referred to as g -priors.

Beta-shrinkage prior, option `gprior(betashrink #1 #2)`. This is a general beta-shrinkage prior that assumes a beta prior with shape parameters $a = \#_1$ and $b = \#_2$ for the shrinkage $\delta = g/(g+1)$:

$$\delta \sim \text{Beta}(a, b)$$

This corresponds to the following prior on g :

$$p(g) = \frac{\Gamma(a+b)}{\Gamma(a)\Gamma(b)} g^{(a-1)} (1+g)^{-(a+b)}$$

Benchmark beta-shrinkage priors, option `gprior(betabench #)`. The benchmark beta-shrinkage prior is a special case of the beta-shrinkage prior as suggested by [Ley and Steel \(2012\)](#). This prior considers the following beta prior on the shrinkage $\delta = g/(g+1)$ with $b = \#$:

$$\delta \sim \text{Beta}\{b \times \max(n, p^2), b\}, \quad b > 0$$

Hyper-g prior, option `gprior(hyperg #)`. This prior is suggested by [Liang et al. \(2008\)](#). It is a special case of a beta-shrinkage prior with the following beta prior on shrinkage δ with $c = \#$:

$$\delta \sim \text{Beta}\left(1, \frac{c}{2} - 1\right), \quad 2 < c \leq 4$$

Hyper-g/n prior, option `gprior(hypergn #)`. This prior is suggested by [Liang et al. \(2008\)](#). It considers the following prior on g with $c = \#$:

$$p(g) = \frac{c-2}{2n} \left(1 + \frac{g}{n}\right)^{-\frac{c}{2}}, \quad 2 < c \leq 4$$

This is equivalent to specifying the prior $\text{Beta}(1, c/2 - 1)$ on $g/g + n$.

Zellner–Siow prior, option `gprior(zsiow)`. This prior was introduced by [Zellner and Siow \(1980\)](#):

$$g \sim \text{Inverse-gamma}\left(\frac{1}{2}, \frac{n}{2}\right)$$

Robust prior, option `gprior(robust)`. The robust prior is a special case in a class of priors introduced in [Bayarri et al. \(2012\)](#). It has the following analytical form:

$$p(g) \sim (1+g)^{-3/2}, \quad g > \frac{n+1}{p_j+1} - 1$$

The prior is model specific because it depends on the model size p_j . This particular form of the robust prior has some desired theoretical properties such as model-selection consistency, which states that the posterior probability of a model that generated the data should go to one as sample size goes to infinity ([Bayarri et al. 2012](#), sec. 3.4).

The Zellner–Siow, benchmark beta-shrinkage, and hyper- g/n priors are consistent in the sense defined in [Ley and Steel \(2012\)](#), while the rest are not. If the data are generated by a single model from the model space and we use a consistent hyperprior for g , then, as the sample size increases, all posterior mass will tend to be allocated to the true model. It can be proven that hyperpriors that do not depend on n cannot be consistent. More details about g -priors and their properties can be found in [Ley and Steel \(2012\)](#).

Centering

Let's continue with our BMA setup from [Model assumptions and generic formulas](#).

A BMA linear regression always includes the intercept in all regressions M_j 's. BMA first recenters predictors to make them orthogonal to the intercept. The computation is then performed using the recentered predictors, and the results are transformed back for final reporting.

The model parameters before and after centering are related by a linear transformation

$$\begin{pmatrix} \beta \\ \alpha \end{pmatrix} = \begin{pmatrix} \mathbf{I}_p & 0 \\ -\frac{1}{n}\mathbf{1}'_n \mathbf{X} & 1 \end{pmatrix} \begin{pmatrix} \tilde{\beta} \\ \tilde{\alpha} \end{pmatrix}$$

where $\tilde{\beta} = \beta$, $\tilde{\alpha}$ are the model parameters associated with the recentered predictor values \mathbf{Z} , and \mathbf{I}_p is the identity matrix of dimension p . The only parameter affected by centering is the intercept.

Conditional posterior distribution of model parameters

See [Model assumptions and generic formulas](#) for a general BMA model setup.

In this section, we describe a posterior distribution of model parameters conditional on a model and parameter g . This section is based on [Steel \(2020\)](#) and [Fernández, Ley, and Steel \(2001b\)](#).

Consider model M_j , with $j \in J_F$ (without loss of generality) and parameter g , fixed or random, of a Zellner's g -prior. If g is fixed, it is independent of model parameters, and the conditioning on it in the formulas below is unnecessary. Consider the following definitions:

$$\begin{aligned} \tilde{\theta}_j &= (\beta_j', \tilde{\alpha})' \\ \delta &= \frac{g}{1+g} \quad (\text{shrinkage factor}) \\ \hat{\beta}_{j,\text{ols}} &= (\mathbf{Z}_j' \mathbf{Z}_j)^{-1} \mathbf{Z}_j' \mathbf{y} \\ \bar{\mathbf{y}} &= \frac{1}{n} \mathbf{1}'_n \mathbf{y} \\ \text{TSS}_{\text{ols}} &= (\mathbf{y} - \bar{\mathbf{y}})' (\mathbf{y} - \bar{\mathbf{y}}) \\ \text{RSS}_{j,\text{ols}} &= (\mathbf{y} - \bar{\mathbf{y}} - \mathbf{Z}_j \hat{\beta}_{j,\text{ols}})' (\mathbf{y} - \bar{\mathbf{y}} - \mathbf{Z}_j \hat{\beta}_{j,\text{ols}}) \\ R_{j,\text{ols}}^2 &= 1 - \text{RSS}_{j,\text{ols}} / \text{TSS}_{\text{ols}} \end{aligned}$$

where $\hat{\beta}_{j,\text{ols}}$, TSS_{ols} , $\text{RSS}_{j,\text{ols}}$ and $R_{j,\text{ols}}^2$ are, respectively, a $p_j \times 1$ vector of regression coefficient estimates, the total sum of squares, the residual sum of squares, and the R^2 for the OLS regression of \mathbf{y} on \mathbf{Z}_j with the intercept $\tilde{\alpha}$.

Define the scale factor:

$$s_{j,\delta}^2 = \delta \text{RSS}_{j,\text{ols}} + (1 - \delta) \text{TSS}_{\text{ols}} \quad (1)$$

Conditional likelihood. The marginal distribution of \mathbf{y} given g and model M_j has the following analytical form,

$$p(\mathbf{y}|g, M_j) \propto \text{TSS}_{\text{ols}} (g + 1)^{\frac{n-p_j-1}{2}} \{1 + g(1 - R_{j,\text{ols}}^2)\}^{-\frac{n-1}{2}} \quad (2)$$

where the proportionality constant is the same for all the models. If $p_j = 0$, that is, the model includes only the intercept, the marginal distribution is $p(\mathbf{y}|g, M_j) \propto \text{TSS}_{\text{ols}}$.

Conditional posterior for model parameters. Given g and model M_j , the posterior distribution of $(\beta_j, \tilde{\alpha})$ is a multivariate t -distribution with $(n - 1)$ degrees of freedom, a $(p + 1) \times 1$ location vector $\boldsymbol{\mu}_j$, and a $(p + 1) \times (p + 1)$ scale matrix $s_{j,\delta}^2 \boldsymbol{\Sigma}_j / (n - 1)$, where

$$\boldsymbol{\mu}_j = \begin{pmatrix} \delta \hat{\boldsymbol{\beta}}_{j,\text{ols}} \\ \frac{1}{\bar{\mathbf{y}}} \end{pmatrix} \quad (3)$$

and

$$\boldsymbol{\Sigma}_j = \begin{Bmatrix} \delta(\mathbf{Z}_j' \mathbf{Z}_j)^{-1} & \mathbf{0} \\ \mathbf{0} & \frac{1}{n} \end{Bmatrix} \quad (4)$$

The posterior distribution of σ^2 given g and M_j is inverse gamma with shape parameter $(n - 1)/2$ and scale parameter $s_{j,\delta}^2/2$ defined in (1).

Conditional posterior moments. The conditional posterior mean and variance of $(\beta_j, \tilde{\alpha})$ are

$$E\{(\beta_j, \tilde{\alpha})|\mathbf{y}, g, M_j\} = \boldsymbol{\mu}_j$$

$$\text{Var}\{(\beta_j, \tilde{\alpha})|\mathbf{y}, g, M_j\} = \frac{s_{j,\delta}^2}{n - 3} \boldsymbol{\Sigma}_j$$

where $\boldsymbol{\mu}_j$, $\boldsymbol{\Sigma}_j$, and $s_{j,\delta}^2$ are defined in (3), (4), and (1), respectively.

The conditional posterior mean of σ^2 is

$$E(\sigma^2|\mathbf{y}, g, M_j) = \frac{s_{j,\delta}^2}{n - 3}$$

Conditional posterior predictive distribution

Consider predicted values \mathbf{y}^* of size $(q \times 1)$ and new centered predictor values \mathbf{Z}^* of size $(q \times p)$. Let $q \times p_j$ matrix \mathbf{Z}_j^* be the predictor values corresponding to the centered predictors included in model M_j . Under model M_j , the posterior predictive distribution is a multivariate t -distribution with $(n - 1)$ degrees of freedom, $q \times 1$ location parameter vector $\boldsymbol{\mu}_j^*$, and $q \times q$ scale matrix $\boldsymbol{\Sigma}_j^*$, where

$$\boldsymbol{\mu}_j^* = \bar{\mathbf{y}} \mathbf{1}_q + \delta \mathbf{Z}_j^* \widehat{\boldsymbol{\beta}}_{j,\text{ols}} \quad (5)$$

$$\boldsymbol{\Sigma}_j^* = \frac{s_{j,\delta}^2}{n-1} \left\{ \mathbf{I}_q + \frac{1}{n} \mathbf{1}_q \mathbf{1}_q' + \delta \mathbf{Z}_j^* (\mathbf{Z}_j^{*\prime} \mathbf{Z}_j^*)^{-1} (\mathbf{Z}_j^*)' \right\} \quad (6)$$

and $s_{j,\delta}^2$ is defined in (1).

MCMC algorithms

When the number of predictors is small, $p \leq 24$, **bmaregress** uses model enumeration to visit all 2^p models. In this case, the formulas provided in the previous sections can be computed exactly. However, when p is large, visiting all possible models is practically infeasible. In this case, MCMC methods are used to approximate the large model space by sampling from it.

Fixed \mathbf{g} parameter

A standard procedure used to explore a large model space is the MC3 algorithm (Madigan and York 1995). Recall from *Priors on the model space* that model M can be represented by a binary inclusion vector $\boldsymbol{\gamma}$. A Markov chain $\{\boldsymbol{\gamma}^t\}_{t=1}^T$ is constructed on the model space with the following target distribution:

$$p(\boldsymbol{\gamma}|\mathbf{y}) \propto p(\mathbf{y}|\boldsymbol{\gamma})p(\boldsymbol{\gamma})$$

where $p(\mathbf{y}|\boldsymbol{\gamma}) \equiv p(\mathbf{y}|M)$ is defined in (2) with $M = M_j$, except we do not need to condition on g here because it is fixed.

MC3 sampler for $\boldsymbol{\gamma}$.

1. Initialize model $\boldsymbol{\gamma}^{(0)}$.
2. Let model $\boldsymbol{\gamma}^{(t)} = (\gamma_1^t, \gamma_2^t, \dots, \gamma_p^t)$ be the current state of the chain at iteration t . Uniformly choose coordinate i of $\boldsymbol{\gamma}^{(t)}$, and propose the new model:

$$\boldsymbol{\gamma}^* = (\gamma_1^t, \dots, 1 - \gamma_i^t, \dots, \gamma_p^t)$$

3. Jump to the model $\boldsymbol{\gamma}^*$ with probability

$$\alpha(\boldsymbol{\gamma}, \boldsymbol{\gamma}^*) = \min \left\{ \frac{p(\boldsymbol{\gamma}^*|\mathbf{y})}{p(\boldsymbol{\gamma}|\mathbf{y})}, 1 \right\}$$

or stay at $\boldsymbol{\gamma}$ if $\alpha(\boldsymbol{\gamma}, \boldsymbol{\gamma}^*) = 1$.

Random g parameter

In this case, both g and γ are random, and we construct a Markov chain based on the following conditional statements:

$$p(\gamma|g, \mathbf{y}) \propto p(\mathbf{y}|g, \gamma)p(\gamma)$$

$$p(g|\gamma, \mathbf{y}) \propto p(\mathbf{y}|g, \gamma)p(g)$$

where $p(\mathbf{y}|g, \gamma) \equiv p(\mathbf{y}|g, M)$ is defined in (2) with $M = M_j$.

For sampling the model γ , the MC3 sampler described above is used. For sampling g , an adaptive random-walk Metropolis sampler is used (Atchadé and Rosenthal 2005). This includes an MH step with a lognormal proposal centered at the previous value. The variance of the lognormal proposal is tuned to result in an optimal acceptance rate $\alpha_{\text{opt}} = 0.44$ (Gelman, Gilks, and Roberts 1997).

For a and A , where $0 < a < A$, we consider the following truncation function:

$$h_{a,A}(x) = \begin{cases} a & \text{if } x \leq a \\ x & \text{if } a < x \leq A \\ A & \text{if } x > A \end{cases}$$

Let $\text{LN}(\mu, \sigma)$ be the lognormal distribution with mean μ and standard deviation σ . Its density is denoted by $f_{\text{LN}}(\cdot; \mu, \sigma)$.

Modified MC3 sampler for (g, γ) .

This algorithm is based on Ley and Steel (2012).

Let $\{g^{(t)}, \gamma^{(t)}\}$ be the current state of the chain at iteration t , where $\gamma^{(t)} = (\gamma_1^t, \gamma_2^t, \dots, \gamma_p^t)$. For each t , we set $\sigma^{(t)} = h_{a,A}(\rho^{(t)})$, where $\rho^{(t)}$ is an adaptation parameter updated periodically during the burn-in period.

1. Initialize $\{g^{(0)}, \gamma^{(0)}\}$ according to the initialization options `minitial()` and `ginitia()`, and let $a = 0.0001$, $A = 10,000$, and $\rho^{(0)} = 2.38$.
2. Sample $\gamma^{(t+1)}$.
 - 2.1. Uniformly choose coordinate i of γ and propose a new model:

$$\gamma^* = (\gamma_1^t, \dots, 1 - \gamma_i^t, \dots, \gamma_p^t)$$

- 2.2. Move to a new model, $\gamma^{(t+1)} = \gamma^*$, with probability

$$\alpha(\gamma^{(t)}, \gamma^*) = \min \left\{ \frac{p(\gamma^*|g^{(t)}, \mathbf{y})}{p(\gamma^{(t)}|g^{(t)}, \mathbf{y})}, 1 \right\}$$

Otherwise, stay at the current model $\gamma^{(t+1)} = \gamma^{(t)}$.

3. Sample $g^{(t+1)}$.
 - 3.1. Generate $g^* \sim \text{LN}(g^{(t)}, \sigma^{(t)})$.

3.2. Move to the new value $g^{(t+1)} = g^*$ with probability

$$\alpha(g^{(t)}, g^*) = \min \left\{ \frac{p(g^* | \gamma^{(t+1)}, \mathbf{y}) f_{\text{LN}}(g^{(t)}; g^*, \sigma^{(t)})}{p(g^{(t)} | \gamma^{(t+1)}, \mathbf{y}) f_{\text{LN}}(g^*; g^{(t)}, \sigma^{(t)})}, 1 \right\}$$

Otherwise, stay at the current value $g^{(t+1)} = g^{(t)}$.

3.3. After each period of a constant number of iterations, 200 by default, update $\rho^{(t)}$ according to the adaptation procedure explained in *Adaptive MH algorithm* in [BAYES] **bayesmh**, and update $\sigma^{(t)} = h_{a,A}(\rho^{(t)})$.

Inference

As we mentioned in *Model assumptions and generic formulas*, the BMA inference is focused on PMPs and PIPs. We define these quantities below. We also provide the formulas for the posterior means and standard deviations of model parameters reported by **bmaregress**. The formulas in this section depend on formulas in *Conditional posterior distribution of model parameters*.

The computations depend on whether parameter g is fixed or random. For a fixed g , the computations also depend on whether the model space was fully explored by enumeration or sampling was used. Below, we provide a setup for each case, which will be used in subsequent subsections.

Fixed g, model enumeration. With model enumeration, analytical formulas are available for PMPs, PIPs, and posterior distributions of model parameters. They depend on the fully enumerated BMA model space \mathcal{M}_F indexed by $J_F = \{1, 2, \dots, 2^p\}$. In **bmaregress**, these computations are available by default when $p \leq 12$ or when the `enumeration` option is specified. `enumeration` is not available with $p > 24$.

Fixed g, sampling. Model enumeration may not be feasible with many predictors, for example, $p > 24$. Sampling of the model space is used in this case instead of enumeration. So we have a subspace of distinct models \mathcal{M}_J visited by the Markov chain indexed by $J \subset J_F$, and we have the Markov chain, a sample of models, $\{m_t\}_{t=1}^T$. We can still compute various quantities analytically, but now they will be conditional on the visited model space \mathcal{M}_J . Alternatively, we can compute these quantities from the MCMC sample of models $\{m_t\}_{t=1}^T$ by using MCMC frequencies. You can use **bmaregress**'s `sampling` option to request sampling. **bmaregress** uses it automatically whenever $p > 12$. Some postestimation commands also support the `frequency` option to request that MCMC-based frequency estimates of PMP, PIP, and other quantities are used instead of the analytical formulas. Other postestimation commands provide both analytical and frequency computations automatically, whenever they are available.

Random g. With a random g , model enumeration is difficult (if not impossible), and sampling is always used. In general, analytical formulas are not available, so all computations are based on an MCMC sample. In this case, the sample also includes g , $\{g_t, m_t\}_{t=1}^T$, and represents a sample from the joint posterior distribution of g and M . **bmaregress** automatically uses sampling with random g , and it is the only option in this case.

In what follows, we provide formulas for each of the above cases, except we consider a fixed g as one case, where a subset J is either a full set J_F or a subset of the full set.

Posterior model probability

The PMP of model M_j is denoted by $P(M_j|\mathbf{y})$. There are two ways to compute PMP. The first way, referred to as analytical PMP, is based on the analytical form of the marginal likelihood in (2). The second way, referred to as MCMC frequency or simply frequency PMP, is based on the frequency of the models visited by the Markov chain.

1. Fixed g .

The analytical PMP of a model M_j is computed by the formula

$$P_a(M_j|\mathbf{y}) = \frac{P(\mathbf{y}|M_j)P(M_j)}{\sum_{l \in J} P(\mathbf{y}|M_l)P(M_l)} \quad (7)$$

where $J = J_F$ with model enumeration and $P(\mathbf{y}|M_j)$ is defined in (2).

When an MCMC sample of models is available, the frequency PMP is computed as follows,

$$P_f(M_j|\mathbf{y}) = \frac{T_j}{T}; \quad T_j = \sum_{t=1}^T I(m_t = M_j) \quad (8)$$

where $I(m_t = M_j)$ denotes the indicator function, which is 1 if $m_t = M_j$ and 0 otherwise.

The `bmaregress` command computes results based on analytical PMP whenever it is available. Therefore, for a fixed g , the term PMP refers to analytical PMP, if not specified otherwise.

The comparison of the frequency PMP to the analytical PMP is used to assess convergence of MCMC. The sampling correlation reported in the header of `bmaregress` is the correlation between the analytical and frequency PMPs.

2. Random g .

In general, when g is random, the formula for the analytical PMP is not available. In this case, `bmaregress` uses the frequency PMP as defined in (8).

Because analytical PMP is not available, the sampling correlation in the random g case is computed as the correlation between the sequences $\{P_h(M_j|\mathbf{y})\}$ and $\{P_f(M_j|\mathbf{y})\}$, where $P_h(M_j|\mathbf{y})$ is the harmonic-mean estimator of $P(M_j|\mathbf{y})$ (Geweke 1989):

$$P_h(M_j|\mathbf{y}) = \frac{P_h(\mathbf{y}|M_j)P(M_j)}{\sum_{l \in J} P_h(\mathbf{y}|M_l)P(M_l)}$$

where

$$P_h(\mathbf{y}|M_j) = \left\{ \frac{1}{T_j} \sum_{t: m_t=M_j} p^{-1}(\mathbf{y}|g_t, m_t) \right\}^{-1}$$

Posterior inclusion probability

Consider a predictor X_k for $1 \leq k \leq p$. The PIP of X_k is defined as the sum of posterior probabilities of models that include X_k . Below, we consider fixed and random g cases separately.

1. Fixed g .

For a model M_j , denote by $X_k \in M_j$ that X_k is included in M_j . Then, the analytical PIP of X_k is computed as

$$\text{PIP}_k^a = \sum_{j \in J} I(X_k \in M_j) P_a(M_j | \mathbf{y}) \quad (9)$$

where $I(\cdot)$ is the indicator function and $P_a(M_j | \mathbf{y})$ is defined in (7). With sampling, you can also compute the frequency PIP based on the MCMC sample. It is computed by replacing $P_a(M_j | \mathbf{y})$ with $P_f(M_j | \mathbf{y})$, defined by (8), in the above formula.

2. Random g .

For a random g , the PIP of X_k is computed as follows,

$$\text{PIP}_k^f = \sum_{j \in J} I(X_k \in M_j) P_f(M_j | \mathbf{y})$$

where $P_f(M_j | \mathbf{y})$ is defined by (8).

Posterior distributions of regression coefficients

Consider a predictor X_k for $1 \leq k \leq p$. Let β_k be the regression coefficient associated with predictor X_k . The posterior distribution of β_k has a mixed structure, which consists of a continuous portion (a mixture of location-scale t -distributions) and a discrete portion (point mass at 0). Also see [Methods and formulas](#) of [BMA] **bmagraph** **coefdensity**.

1. Fixed g .

The analytical posterior distribution of β_k is

$$p(\beta_k | \mathbf{y}) = (1 - \text{PIP}_k^a) \delta_0 + \text{PIP}_k^a \mathbf{f}_k$$

where δ_0 denotes the point mass at 0, and

$$\mathbf{f}_k = \sum_{j \in J} I(X_k \in M_j) p(\beta_k | M_j, \mathbf{y}) \frac{P_a(M_j | \mathbf{y})}{\text{PIP}_k^a} \quad (10)$$

In the above, $p(\beta_k | M_j, \mathbf{y})$ is a location-scale t -distribution with the model-specific location vector and scale matrix as defined, respectively, in (3) and (4). $P_a(M_j | \mathbf{y})$ is defined in (7) and PIP_k^a is defined in (9).

2. Random g .

There is no analytical formula for the posterior distribution of a regression coefficient. A kernel density estimator is used to approximate \mathbf{f}_k in the above based on the sample of coefficients generated by the `bmacoefs` command. See [Methods and formulas](#) of [BMA] **bmagraph** **coefdensity** for details.

Posterior means and variances of model parameters

1. Fixed g .

Let $\tilde{\boldsymbol{\theta}}_j$ be a $(p_j + 1) \times 1$ vector of regression coefficients with intercept $\tilde{\alpha}$ for model M_j in the centered parameterization. Let $\tilde{\boldsymbol{\theta}} = (\boldsymbol{\beta}', \tilde{\alpha})'$ be a $(p + 1) \times 1$ parameter vector in the centered parameterization and $\boldsymbol{\theta} = (\boldsymbol{\beta}', \alpha)'$ be a $(p + 1) \times 1$ parameter vector in the original, uncentered parameterization.

Then,

$$E(\tilde{\boldsymbol{\theta}}_j | \mathbf{y}, g, M_j) = \boldsymbol{\mu}_j$$

$$\text{Var}(\tilde{\boldsymbol{\theta}}_j | \mathbf{y}, g, M_j) = \boldsymbol{\Sigma}_j$$

where $\boldsymbol{\mu}_j$ and $\boldsymbol{\Sigma}_j$ are defined in (3) and (4).

The analytical unconditional mean and variance for the centered parameter vector $\tilde{\boldsymbol{\theta}}$ are defined as follows,

$$\begin{aligned} E(\tilde{\boldsymbol{\theta}} | \mathbf{y}) &= \sum_{j \in J} P_a(M_j | \mathbf{y}) E(\tilde{\boldsymbol{\theta}}_j | \mathbf{y}, g, M_j) = \sum_{j \in J} P_a(M_j | \mathbf{y}) \boldsymbol{\mu}_j \\ \text{Var}(\tilde{\boldsymbol{\theta}} | \mathbf{y}) &= \sum_{j \in J} P_a(M_j | \mathbf{y}) (\boldsymbol{\Sigma}_j + \boldsymbol{\mu}_j \boldsymbol{\mu}_j') - E(\tilde{\boldsymbol{\theta}} | \mathbf{y}) E(\tilde{\boldsymbol{\theta}} | \mathbf{y})' \end{aligned}$$

where $P_a(M_j | \mathbf{y})$ is defined in (7).

The analytical unconditional posterior mean and variance of $\boldsymbol{\theta}$ are

$$E(\boldsymbol{\theta} | \mathbf{y}) = \mathbf{A} E(\tilde{\boldsymbol{\theta}} | \mathbf{y}) \quad (11)$$

$$\text{Var}(\boldsymbol{\theta} | \mathbf{y}) = \mathbf{A} \text{Var}(\tilde{\boldsymbol{\theta}} | \mathbf{y}) \mathbf{A}' \quad (12)$$

where $\mathbf{A} = \begin{pmatrix} \mathbf{I}_p & 0 \\ -\frac{1}{n} \mathbf{1}' \mathbf{X} & 1 \end{pmatrix}$.

The analytical unconditional posterior mean of σ^2 is

$$E(\sigma^2 | \mathbf{y}) = \sum_{j \in J} P_a(M_j | \mathbf{y}) E(\sigma^2 | \mathbf{y}, g, M_j) = \sum_{j \in J} P_a(M_j | \mathbf{y}) \frac{s_{j,\delta}^2}{n-3} \quad (13)$$

2. Random g .

Because the analytical form of $p(\beta_k | M_j, \mathbf{y})$ is not available with a random g , `bmaregress` computes Monte Carlo estimators of the posterior mean and variance of β_k 's.

The frequency estimate of the unconditional mean and variance for the centered parameter vector $\tilde{\theta}$ are defined as follows:

$$\widehat{E}(\tilde{\theta}|\mathbf{y}) = \frac{1}{T} \sum_{t=1}^T E(\tilde{\theta}_t|\mathbf{y}, g_t, m_t) = \frac{1}{T} \sum_{t=1}^T \boldsymbol{\mu}_t$$

$$\widehat{\text{Var}}(\tilde{\theta}|\mathbf{y}) = \frac{1}{T} \sum_{t=1}^T (\boldsymbol{\Sigma}_t + \boldsymbol{\mu}_t \boldsymbol{\mu}_t') - \widehat{E}(\tilde{\theta}|\mathbf{y}) \widehat{E}(\tilde{\theta}|\mathbf{y})'$$

where $\boldsymbol{\mu}_t$ is defined in (3) and $\boldsymbol{\Sigma}_t$ is defined in (4), in which index j is replaced with the iteration t .

The frequency estimate of the unconditional posterior mean and variance of θ are

$$\widehat{E}(\theta|\mathbf{y}) = \mathbf{A} \widehat{E}(\tilde{\theta}|\mathbf{y})$$

$$\widehat{\text{Var}}(\theta|\mathbf{y}) = \mathbf{A} \widehat{\text{Var}}(\tilde{\theta}|\mathbf{y}) \mathbf{A}'$$

where $A = \begin{pmatrix} \mathbf{I}_p & 0 \\ -\frac{1}{n} \mathbf{1}' \mathbf{X} & 1 \end{pmatrix}$.

The unconditional posterior mean of σ^2 estimated based on the MCMC frequencies is

$$\widehat{E}(\sigma^2|\mathbf{y}) = \frac{1}{T} \sum_{t=1}^T E[\{\sigma^{(t)}\}^2|\mathbf{y}, g_t, m_t] = \frac{1}{T} \sum_{t=1}^T \frac{s_{t,\delta}^2}{n-3} \quad (14)$$

where $s_{t,\delta}^2$ is defined by (1) in *Conditional posterior distribution of model parameters* but for model m_t (with index j replaced with iteration t).

References

- Atchadé, Y. F., and J. S. Rosenthal. 2005. On adaptive Markov chain Monte Carlo algorithms. *Bernoulli* 11: 815–828. <https://doi.org/10.3150/bj/1130077595>.
- Banner, K. M., and M. D. Higgs. 2017. Considerations for assessing model averaging of regression coefficients. *Ecological Applications* 27: 78–93. <https://doi.org/10.1002/eap.1419>.
- Bayarri, M. J., J. O. Berger, A. Forte, and G. García-Donato. 2012. Criteria for Bayesian model choice with application to variable selection. *Annals of Statistics* 40: 1550–1577. <https://doi.org/10.1214/12-AOS1013>.
- Becker, G. S. 1968. Crime and punishment: An economic approach. *Journal of Political Economy* 76: 169–217. <https://doi.org/10.1086/259394>.
- Brier, S. S., and S. E. Fienberg. 1980. Recent econometric modeling of crime and punishment: Support for the deterrence hypothesis? *Evaluation Review* 4: 147–191. <https://doi.org/10.1177/0193841X8000400201>.
- Chatterjee, S., and A. S. Hadi. 2012. *Regression Analysis by Example*. 5th ed. New York: Wiley.
- Draper, D. 1999. Comment [on Hoeting et al. (1999)]. *Statistical Science* 14: 405–409.
- Ehrlich, I. 1973. Participation in illegitimate activities: A theoretical and empirical investigation. *Journal of Political Economy* 81: 521–565. <https://doi.org/10.1086/260058>.
- Eicher, T. S., C. Papageorgiou, and A. E. Raftery. 2011. Default priors and predictive performance in Bayesian model averaging, with application to growth determinants. *Journal of Applied Econometrics* 26: 30–55. <https://doi.org/10.1002/jae.1112>.

- Fernández, C., E. Ley, and M. F. J. Steel. 2001a. Benchmark priors for Bayesian model averaging. *Journal of Econometrics* 100: 381–427. [https://doi.org/10.1016/S0304-4076\(00\)00076-2](https://doi.org/10.1016/S0304-4076(00)00076-2).
- . 2001b. Model uncertainty in cross-country growth regressions. *Journal of Applied Econometrics* 16: 563–576. <https://doi.org/10.1002/jae.623>.
- Fletcher, D. 2018. *Model Averaging*. Berlin: Springer.
- Foster, D. P., and E. I. George. 1994. The risk inflation criterion for multiple regression. *Annals of Statistics* 22: 1947–1975. <https://doi.org/10.1214/aos/1176325766>.
- Fragoso, T. M., W. Bertoli, and F. Louzada. 2018. Bayesian model averaging: A systematic review and conceptual classification. *International Statistical Review* 86: 1–28. <https://doi.org/10.1111/insr.12243>.
- Gelman, A., W. R. Gilks, and G. O. Roberts. 1997. Weak convergence and optimal scaling of random walk Metropolis algorithms. *Annals of Applied Probability* 7: 110–120. <https://doi.org/10.1214/aoap/1034625254>.
- Geweke, J. 1989. Bayesian inference in econometric models using Monte Carlo integration. *Econometrica* 57: 1317–1339. <https://doi.org/10.2307/1913710>.
- Hoeting, J. A., D. Madigan, A. E. Raftery, and C. T. Volinsky. 1999. Bayesian model averaging: A tutorial. *Statistical Science* 14: 382–417. <https://doi.org/10.1214/ss/1009212519>.
- Kass, R. E., and A. E. Raftery. 1995. Bayes factors. *Journal of the American Statistical Association* 90: 773–795. <https://doi.org/10.1080/01621459.1995.10476572>.
- Kass, R. E., and L. Wasserman. 1995. A reference Bayesian test for nested hypotheses and its relationship to the Schwarz criterion. *Journal of the American Statistical Association* 90: 928–934. <https://doi.org/10.1080/01621459.1995.10476592>.
- Leamer, E. E. 1973. Multicollinearity: A Bayesian interpretation. *Review of Economics and Statistics* 55: 371–380. <https://doi.org/10.2307/1927962>.
- . 1978. *Specification Searches: Ad Hoc Inference with Nonexperimental Data*. New York: Wiley.
- Ley, E., and M. F. J. Steel. 2009. On the effect of prior assumptions in Bayesian model averaging with applications to growth regression. *Journal of Applied Econometrics* 24: 651–674. <https://doi.org/10.1002/jae.1057>.
- . 2012. Mixtures of g -priors for Bayesian model averaging with economic applications. *Journal of Econometrics* 171: 251–266. <https://doi.org/10.1016/j.jeconom.2012.06.009>.
- Liang, F., R. Paulo, G. Molina, M. A. Clyde, and J. O. Berger. 2008. Mixtures of g priors for Bayesian variable selection. *Journal of the American Statistical Association* 103: 410–423. <https://doi.org/10.1198/016214507000001337>.
- Madigan, D., and J. York. 1995. Bayesian graphical models for discrete data. *Journal of Statistical Review* 63: 215–232. <https://doi.org/10.2307/1403615>.
- Moral-Benito, E. 2015. Model averaging in economics: An overview. *Journal of Economic Surveys* 29: 46–75. <https://doi.org/10.1111/joes.12044>.
- Porwal, A., and A. E. Raftery. 2022a. Effect of model space priors on statistical inference with model uncertainty. *New England Journal of Statistics in Data Science* 1–10. <https://doi.org/10.51387/22-NEJSDS14>.
- . 2022b. Comparing methods for statistical inference with model uncertainty. *PNAS* 119(16): e2120737119. <https://doi.org/10.1073/pnas.2120737119>.
- Raftery, A. E., D. Madigan, and J. A. Hoeting. 1997. Bayesian model averaging for linear regression models. *Journal of the American Statistical Association* 92: 179–191. <https://doi.org/10.1080/01621459.1997.10473615>.
- Sala-I-Martin, X. X. 1997. I just ran two million regressions. *American Economic Review* 87: 178–183.
- Steel, M. F. J. 2020. Model averaging and its use in economics. *American Economic Review* 58: 644–719. <https://doi.org/10.1257/jel.20191385>.
- Vandaele, W. 1978. Participation in illegitimate activities: Ehrlich revisited. In *Deterrence and Incapacitation: Estimating the Effects of Criminal Sanctions on Crime Rates*, ed. A. Blumstein, J. Cohen, and D. Nagin, 270–335. Washington, DC: National Academy of Sciences.
- Zellner, A. 1986. On assessing prior distributions and Bayesian regression analysis with g -prior distributions. In Vol. 6 of *Bayesian Inference and Decision Techniques: Essays in Honor of Bruno De Finetti (Studies in Bayesian Econometrics and Statistics)*, ed. P. K. Goel and A. Zellner, 233–343. Amsterdam: North-Holland.
- Zellner, A., and A. Siow. 1980. Posterior odds ratios for selected regression hypotheses. *Trabajos de estadística y de investigación operativa* 31: 585–603. <https://doi.org/10.1007/BF02888369>.

Also see

- [BMA] **BMA postestimation** — Postestimation tools for Bayesian model averaging
- [BMA] **Intro** — Introduction to Bayesian model averaging
- [BMA] **BMA commands** — Introduction to commands for Bayesian model averaging
- [BMA] **Glossary**
- [BAYES] **bayes: regress** — Bayesian linear regression
- [BAYES] **bayesmh** — Bayesian models using Metropolis–Hastings algorithm⁺
- [D] **splitsample** — Split data into random samples
- [D] **vl** — Manage variable lists
- [R] **regress** — Linear regression
- [U] **20 Estimation and postestimation commands**

Stata, Stata Press, and Mata are registered trademarks of StataCorp LLC. Stata and Stata Press are registered trademarks with the World Intellectual Property Organization of the United Nations. StataNow and NetCourseNow are trademarks of StataCorp LLC. Other brand and product names are registered trademarks or trademarks of their respective companies. Copyright © 1985–2023 StataCorp LLC, College Station, TX, USA. All rights reserved.



For suggested citations, see the FAQ on [citing Stata documentation](#).